

# DNA pol $\gamma$ (L-20): sc-5933

## BACKGROUND

DNA replication, recombination and repair, all of which are necessary for genomic stability, require the presence of exonucleases. In DNA replication, these enzymes are involved in the processing of Okazaki fragments, whereas in DNA repair, they function to excise damaged DNA fragments and correct recombinational mismatches. These exonucleases include the family of DNA polymerases. DNA pol  $\alpha$ ,  $\beta$ ,  $\delta$ , and  $\epsilon$  are involved in DNA replication and repair. DNA pol  $\delta$  and DNA pol  $\epsilon$  are multisubunit enzymes, with DNA pol  $\delta$  consisting of two subunits, p125, which interacts with the sliding DNA clamp protein PCNA, and p50. The nuclear-encoded DNA pol  $\gamma$  is the only DNA polymerase required for the replication of the mitochondrial DNA. DNA pol  $\zeta$  is ubiquitously expressed in various tissues and mediates the cellular mechanism of damage-induced mutagenesis. DNA pol  $\theta$  is a DNA polymerase-helicase that binds ATP and is involved in the repair of interstrand crosslinks.

## REFERENCES

1. Bambara, R.A. et al. 1991. Properties of DNA polymerases  $\delta$  and  $\epsilon$ , and their roles in eukaryotic DNA replication. *Biochim. Biophys. Acta* 1088: 11-24.
2. Li, J.J. et al. 1992. DNA replication. Eukaryotic initiation rites. *Nature* 357: 114-115.

## CHROMOSOMAL LOCATION

Genetic locus: POLG (human) mapping to 15q26.1; Polg (mouse) mapping to 7 D3.

## SOURCE

DNA pol  $\gamma$  (L-20) is an affinity purified goat polyclonal antibody raised against a peptide mapping near the N-terminus of DNA pol  $\gamma$  of mouse origin.

## PRODUCT

Each vial contains 200  $\mu$ g IgG in 1.0 ml of PBS with < 0.1% sodium azide and 0.1% gelatin.

Blocking peptide available for competition studies, sc-5933 P, (100  $\mu$ g peptide in 0.5 ml PBS containing < 0.1% sodium azide and 0.2% BSA).

## APPLICATIONS

DNA pol  $\gamma$  (L-20) is recommended for detection of DNA pol  $\gamma$  of mouse, rat and, to a lesser extent, human origin by Western Blotting (starting dilution 1:200, dilution range 1:100-1:1000), immunoprecipitation [1-2  $\mu$ g per 100-500  $\mu$ g of total protein (1 ml of cell lysate)], immunofluorescence (starting dilution 1:50, dilution range 1:50-1:500), immunohistochemistry (including paraffin-embedded sections) (starting dilution 1:50, dilution range 1:50-1:500) and solid phase ELISA (starting dilution 1:30, dilution range 1:30-1:3000).

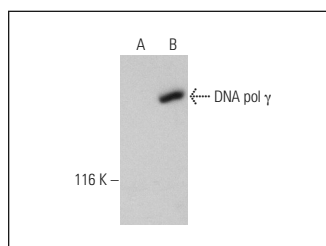
Suitable for use as control antibody for DNA pol  $\gamma$  siRNA (h): sc-37775, DNA pol  $\gamma$  siRNA (m): sc-37776, DNA pol  $\gamma$  siRNA (r): sc-270290, DNA pol  $\gamma$  shRNA Plasmid (h): sc-37775-SH, DNA pol  $\gamma$  shRNA Plasmid (m): sc-37776-SH, DNA pol  $\gamma$  shRNA Plasmid (r): sc-270290-SH, DNA pol  $\gamma$  shRNA (h) Lentiviral Particles: sc-37775-V, DNA pol  $\gamma$  shRNA (m) Lentiviral Particles: sc-37776-V and DNA pol  $\gamma$  shRNA (r) Lentiviral Particles: sc-270290-V.

Molecular Weight of DNA pol  $\gamma$ : 140 kDa.

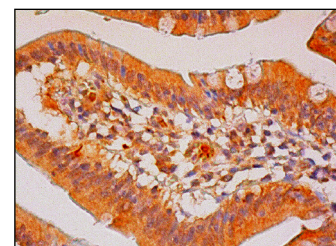
## RECOMMENDED SECONDARY REAGENTS

To ensure optimal results, the following support (secondary) reagents are recommended: 1) Western Blotting: use donkey anti-goat IgG-HRP: sc-2020 (dilution range: 1:2000-1:100,000) or Cruz Marker™ compatible donkey anti-goat IgG-HRP: sc-2033 (dilution range: 1:2000-1:5000), Cruz Marker™ Molecular Weight Standards: sc-2035, TBS Blotto A Blocking Reagent: sc-2333 and Western Blotting Luminol Reagent: sc-2048. 2) Immunoprecipitation: use Protein A/G PLUS-Agarose: sc-2003 (0.5 ml agarose/2.0 ml). 3) Immunofluorescence: use donkey anti-goat IgG-FITC: sc-2024 (dilution range: 1:100-1:400) or donkey anti-goat IgG-TR: sc-2783 (dilution range: 1:100-1:400) with UltraCruz™ Mounting Medium: sc-24941. 4) Immunohistochemistry: use ImmunoCruz™: sc-2053 or ABC: sc-2023 goat IgG Staining Systems.

## DATA



DNA pol  $\gamma$  (L-20): sc-5933. Western blot analysis of DNA pol  $\gamma$  expression in non-transfected: sc-117752 (A) and human DNA pol  $\gamma$  transfected: sc-116254 (B) 293T whole cell lysates.



DNA pol  $\gamma$  (L-20): sc-5933. Immunoperoxidase staining of formalin fixed, paraffin-embedded human small intestine tissue showing cytoplasmic staining of glandular cells.

## STORAGE

Store at 4° C, \*\*DO NOT FREEZE\*\*. Stable for one year from the date of shipment. Non-hazardous. No MSDS required.

## RESEARCH USE

For research use only, not for use in diagnostic procedures.

## PROTOCOLS

See our web site at [www.scbt.com](http://www.scbt.com) or our catalog for detailed protocols and support products.

**MONOS**  
Satisfaction  
Guaranteed

Try **DNA pol  $\gamma$  (G-6): sc-390634**, our highly recommended monoclonal alternative to DNA pol  $\gamma$  (L-20).