

TAFI (13H4): sc-59708

BACKGROUND

The Thrombin-activatable fibrinolysis inhibitor (TAFI), also designated procarboxypeptidase B2 or procarboxypeptidase U, is a hepatically secreted zymogen that downregulates fibrinolysis when activated by Thrombin. It is synthesized in the liver and circulates in plasma in its proenzyme form. When activated, TAFI removes C-terminal arginine or lysine residues from biologically active peptides such as kinins or anaphylatoxins. TAFI cleaves the lysine residues from Fibrin, which prevents plasminogen from activation into plasmin and retards the lysis of a Fibrin clot. Elevated concentration of TAFI in blood is considered a risk factor for venous thrombosis, whereas a deficiency might contribute to the severity of bleeding disorders in hemophilias A and B. Decreased levels of TAFI are found in chronic liver disease.

REFERENCES

1. von dem Borne, P.A., Bajzar, L., Meijers, J.C., Nesheim, M.E. and Bouma, B.N. 1997. Thrombin-mediated activation of Factor XI results in a Thrombin-activatable fibrinolysis inhibitor-dependent inhibition of fibrinolysis. *J. Clin. Invest.* 99: 2323-2327.
2. Zhao, L., Morser, J., Bajzar, L., Nesheim, M. and Nagashima, M. 1998. Identification and characterization of two Thrombin-activatable fibrinolysis inhibitor isoforms. *Thromb. Haemost.* 80: 949-955.
3. Hall, S.W., Nagashima, M., Zhao, L., Morser, J. and Leung, L.L. 1999. Thrombin interacts with thrombomodulin, Protein C and Thrombin-activatable fibrinolysis inhibitor via specific and distinct domains. *J. Biol. Chem.* 274: 25510-25516.
4. Juhan-Vague, I., Renucci, J.F., Grimaux, M., Morange, P.E., Gouvement, J., Gourmelin, Y. and Alessi, M.C. 2000. Thrombin-activatable fibrinolysis inhibitor antigen levels and cardiovascular risk factors. *Arterioscler. Thromb. Vasc. Biol.* 20: 2156-2161.
5. Bajzar, L. 2000. Thrombin-activatable fibrinolysis inhibitor and an anti-fibrinolytic pathway. *Arterioscler. Thromb. Vasc. Biol.* 20: 2511-2518.
6. van Tilburg, N.H., Rosendaal, F.R. and Bertina, R.M. 2000. Thrombin-activatable fibrinolysis inhibitor and the risk for deep vein thrombosis. *Blood* 95: 2855-2859.
7. Silveira, A., Schatteman, K., Goossens, F., Moor, E., Scharpe, S., Stromqvist, M., Hendriks, D. and Hamsten, A. 2000. Plasma procarboxypeptidase U in men with symptomatic coronary artery disease. *Thromb. Haemost.* 84: 364-368.
8. Schroeder, V., Chatterjee, T., Mehta, H., Windecker, S., Pham, T., Devantay, N., Meier, B. and Kohler, H.P. 2002. Thrombin-activatable fibrinolysis inhibitor (TAFI) levels in patients with coronary artery disease investigated by angiography. *Thromb. Haemost.* 88: 1020-1025.
9. Bouma, B.N. and Meijers, J.C. 2003. Thrombin-activatable fibrinolysis inhibitor (TAFI, plasma procarboxypeptidase B, procarboxypeptidase R, procarboxypeptidase U). *J. Thromb. Haemost.* 1: 1566-1574.

STORAGE

Store at 4° C, ****DO NOT FREEZE****. Stable for one year from the date of shipment. Non-hazardous. No MSDS required.

CHROMOSOMAL LOCATION

Genetic locus: CPB2 (human) mapping to 13q14.13.

SOURCE

TAFI (13H4) is a mouse monoclonal antibody raised against purified full length native TAFI of human origin.

PRODUCT

Each vial contains 100 µg IgG₁ in 1.0 ml of PBS with < 0.1% sodium azide and 0.1% gelatin.

APPLICATIONS

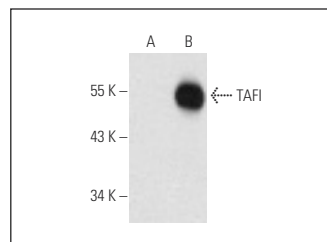
TAFI (13H4) is recommended for detection of TAFI of human origin by Western Blotting (starting dilution 1:200, dilution range 1:100-1:1000), immunoprecipitation [1-2 µg per 100-500 µg of total protein (1 ml of cell lysate)] and solid phase ELISA (starting dilution 1:30, dilution range 1:30-1:3000).

Suitable for use as control antibody for TAFI siRNA (h): sc-63098, TAFI shRNA Plasmid (h): sc-63098-SH and TAFI shRNA (h) Lentiviral Particles: sc-63098-V.

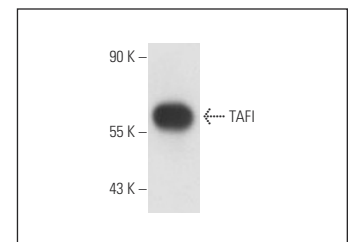
Molecular Weight of TAFI: 48-58 kDa.

Positive Controls: human plasma extract: sc-364374, TAFI (h): 293T Lysate: sc-159775 or human platelet extract: sc-363773.

DATA



TAFI (13H4): sc-59708. Western blot analysis of TAFI expression in non-transfected: sc-117752 (A) and human TAFI transfected: sc-159775 (B) 293T whole cell lysates.



TAFI (13H4): sc-59708. Western blot analysis of TAFI expression in human platelet whole cell lysate.

RESEARCH USE

For research use only, not for use in diagnostic procedures.

PROTOCOLS

See our web site at www.scbt.com for detailed protocols and support products.