

pan CEA (D14HD11): sc-59874

BACKGROUND

Carcinoembryonic antigen (CEA) is one of the most commonly used tumor markers in serum immunoassay determinations of carcinoma. Members of the CEACAM (carcinoembryonic antigen-related cell adhesion molecule) family contain a single N domain, with structural homology to the immunoglobulin variable domains, followed by a variable number of immunoglobulin constant-like A and/or B domains. CEACAMS, such as CEACAM1, CEACAM7, CD66C, CD66D and CD66E, have diverse roles within the cell, including roles in the differentiation and arrangement of tissue three-dimensional structure, angiogenesis, apoptosis, tumor suppression, metastasis, and the modulation of innate and adaptive immune responses. The human CEACAM proteins are encoded by genes which are located within a 1.2 Mb cluster on the long arm of chromosome 19.

REFERENCES

1. Muenzner, P., et al. 2008. The CEACAM1 transmembrane domain, but not the cytoplasmic domain, directs internalization of human pathogens via membrane microdomains. *Cell. Microbiol.* 10: 1074-1092.
2. Skubitz, K.M. and Skubitz, A.P. 2008. Interdependency of CEACAM-1, -3, -6, and -8 induced human neutrophil adhesion to endothelial cells. *J. Transl. Med.* 6: 78.
3. Lee, H.S., et al. 2008. CEACAM1 dynamics during neisseria gonorrhoeae suppression of CD4⁺ T lymphocyte activation. *J. Immunol.* 180: 6827-6835.
4. Gaur, S., et al. 2008. Altered splicing of CEACAM1 in breast cancer: identification of regulatory sequences that control splicing of CEACAM1 into long or short cytoplasmic domain isoforms. *Mol. Cancer* 7: 46.
5. Slevogt, H., et al. 2008. CEACAM1 inhibits Toll-like receptor 2-triggered antibacterial responses of human pulmonary epithelial cells. *Nat. Immunol.* 9: 1270-1278.
6. Nittka, S., et al. 2008. The CEACAM1-mediated apoptosis pathway is activated by CEA and triggers dual cleavage of CEACAM1. *Oncogene* 27: 3721-3728.
7. Zalzali, H., et al. 2008. CEACAM1, a SOX9 direct transcriptional target identified in the colon epithelium. *Oncogene* 27: 7131-7138.
8. Callaghan, M.J., et al. 2008. Haplotypic diversity in human CEACAM genes: effects on susceptibility to meningococcal disease. *Genes Immun.* 9: 30-37.
9. Rahmoun, M., et al. 2009. Cytokine-induced CEACAM1 expression on keratinocytes is characteristic for psoriatic skin and contributes to a prolonged lifespan of neutrophils. *J. Invest. Dermatol.* 129: 671-681.

SOURCE

pan CEA (D14HD11) is a mouse monoclonal antibody raised against CEA of human origin.

PRODUCT

Each vial contains 200 µg IgG₁ kappa light chain in 1.0 ml of PBS with < 0.1% sodium azide and 0.1% gelatin.

APPLICATIONS

pan CEA (D14HD11) is recommended for detection of a broad range of CEACAM family members on transfectants of human origin by Western Blotting (starting dilution 1:200, dilution range 1:100-1:1000), immunoprecipitation [1-2 µg per 100-500 µg of total protein (1 ml of cell lysate)], immunofluorescence (starting dilution 1:50, dilution range 1:50-1:500), immunohistochemistry (including paraffin-embedded sections) (starting dilution 1:50, dilution range 1:50-1:500) and flow cytometry (1 µg per 1 x 10⁶ cells); not recommended for detection of CEACAM7 and CD67.

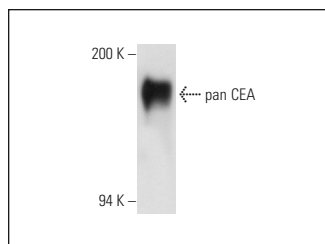
Molecular Weight of pan CEA: 80-200 kDa.

Positive Controls: COLO 320DM cell lysate: sc-2226, MCF7 whole cell lysate: sc-2206 or T84 whole cell lysate: sc-364797.

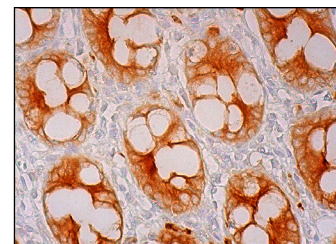
RECOMMENDED SUPPORT REAGENTS

To ensure optimal results, the following support reagents are recommended: 1) Western Blotting: use m-IgGκ BP-HRP: sc-516102 or m-IgGκ BP-HRP (Cruz Marker): sc-516102-CM (dilution range: 1:1000-1:10000), Cruz Marker™ Molecular Weight Standards: sc-2035, UltraCruz® Blocking Reagent: sc-516214 and Western Blotting Luminol Reagent: sc-2048. 2) Immunoprecipitation: use Protein A/G PLUS-Agarose: sc-2003 (0.5 ml agarose/2.0 ml). 3) Immunofluorescence: use m-IgGκ BP-FITC: sc-516140 or m-IgGκ BP-PE: sc-516141 (dilution range: 1:50-1:200) with UltraCruz® Mounting Medium: sc-24941 or UltraCruz® Hard-set Mounting Medium: sc-359850. 4) Immunohistochemistry: use m-IgGκ BP-HRP: sc-516102 with DAB, 50X: sc-24982 and Immunohistomount: sc-45086, or Organo/Limonene Mount: sc-45087.

DATA



pan CEA (D14HD11): sc-59874. Western blot analysis of pan CEA expression in MCF7 whole cell lysate.



pan CEA (D14HD11): sc-59874. Immunoperoxidase staining of formalin fixed, paraffin-embedded human rectum tissue showing membrane and cytoplasmic staining of glandular cells.

STORAGE

Store at 4° C, ****DO NOT FREEZE****. Stable for one year from the date of shipment. Non-hazardous. No MSDS required.

RESEARCH USE

For research use only, not for use in diagnostic procedures.

PROTOCOLS

See our web site at www.scbt.com for detailed protocols and support products.