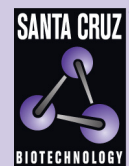


# IGFBP3 (C-19): sc-6003



The Power to Question

## BACKGROUND

The Insulin-like growth factor-binding proteins, or IGFBPs, are a family of homologous proteins that have co-evolved with the IGFs. They serve not only as shuttle molecules for the soluble IGFs, but also confer a level of regulation to the IGF signaling system. Physical association of the IGFBPs with IGF influences the bio-availability of the growth factors, as well as their concentration and distribution in the extracellular environment. In addition, the IGFBPs appear to have biological activity independent of the IGFs. Seven IGFBPs have thus far been described, each differing in their tissue distribution, half-lives and modulation of IGF interactions with their receptors. For instance, IGFBP1 is negatively regulated by Insulin production. The IGFBP1 gene is expressed at a high level during fetal liver development and in response to nutritional changes and diabetes. It has been suggested that IGFBP2 functions as chaperone, escorting IGFs to their target tissues. It is expressed in several human tissues including fetal eye and fetal brain. IGFBP3 is the most abundant IGFBP and is complexed with roughly 80% of the serum IGFs. Both IGFBP3 and IGFBP4 are released by dermal fibroblasts in response to incision injury. IGFBP5 is secreted by myoblasts and may play a key role in muscle differentiation. IGFBP6 differs from other IGFBPs in having the highest affinity for IGF-II. Glycosylated human IGFBP6 is expressed in Chinese hamster ovary (CHO) cells, whereas nonglycosylated recombinant human IGFBP6 is expressed in *E. coli*. IGFBP7 is a secreted protein and binds both IGF-I and IGF-II with a relatively low affinity. It stimulates prostacyclin production and may also function as a growth-suppressing factor.

## CHROMOSOMAL LOCATION

Genetic locus: IGFBP3 (human) mapping to 7p12.3.

## SOURCE

IGFBP3 (C-19) is an affinity purified goat polyclonal antibody raised against a peptide mapping at the C-terminus of IGFBP3 of human origin.

## PRODUCT

Each vial contains 200 µg IgG in 1.0 ml of PBS with < 0.1% sodium azide and 0.1% gelatin.

Blocking peptide available for competition studies, sc-6003 P, (100 µg peptide in 0.5 ml PBS containing < 0.1% sodium azide and 0.2% BSA).

## APPLICATIONS

IGFBP3 (C-19) is recommended for detection of precursor and mature IGFBP3 of human and, to a lesser extent, rat origin by Western Blotting (starting dilution 1:200, dilution range 1:100-1:1000), immunoprecipitation [1-2 µg per 100-500 µg of total protein (1 ml of cell lysate)], immunofluorescence (starting dilution 1:50, dilution range 1:50-1:500) and solid phase ELISA (starting dilution 1:30, dilution range 1:30-1:3000).

Suitable for use as control antibody for IGFBP3 siRNA (h): sc-39587, IGFBP3 shRNA Plasmid (h): sc-39587-SH and IGFBP3 shRNA (h) Lentiviral Particles: sc-39587-V.

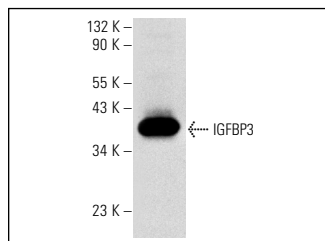
Molecular Weight of IGFBP3 isoforms: 40/44 kDa.

Positive Controls: human plasma lysate: sc-364374.

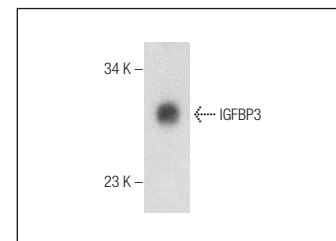
## STORAGE

Store at 4° C, **\*\*DO NOT FREEZE\*\***. Stable for one year from the date of shipment. Non-hazardous. No MSDS required.

## DATA



IGFBP3 (C-19): sc-6003. Western blot analysis of human recombinant IGFBP3.



IGFBP3 (C-19): sc-6003. Western blot analysis of IGFBP3 in human plasma.

## SELECT PRODUCT CITATIONS

- Shang, Y., et al. 1999. Signal relay by retinoic acid receptors  $\alpha$  and  $\beta$  in the retinoic acid-induced expression of Insulin-like growth factor-binding protein-3 in breast cancer cells. *J. Biol. Chem.* 274: 18005-18010.
- Shimizu, M., et al. 2005. EGCG inhibits activation of the Insulin-like growth factor-1 receptor in human colon cancer cells. *Biochem. Biophys. Res. Commun.* 334: 947-953.
- Gielen, S.C., et al. 2005. Steroid-modulated proliferation of human endometrial carcinoma cell lines: any role for Insulin-like growth factor signaling? *J. Soc. Gynecol. Investig.* 12: 58-64.
- Yan, X., et al. 2006. The aminoterminal Insulin-like growth factor (IGF) binding domain of IGF binding protein-3 cannot be functionally substituted by the structurally homologous domain of CCN3. *Endocrinology* 147: 5268-5274.
- Miyamoto, S., et al. 2007. Matrix metalloproteinase-7 triggers the matrix action of Insulin-like growth factor-II via proteinase activity on Insulin-like growth factor binding protein 2 in the extracellular matrix. *Cancer Sci.* 98: 685-691.
- Yan, X., et al. 2009. Activity of human pregnancy Insulin-like growth factor binding protein-3: determination by reconstituting recombinant complexes. *Endocrinology* 150: 4968-4976.

## RESEARCH USE

For research use only, not for use in diagnostic procedures.



Try **IGFBP3 (E-9): sc-374365** or **IGFBP3 (B-5): sc-365936**, our highly recommended monoclonal alternatives to IGFBP3 (C-19). Also, for AC, HRP, FITC, PE, Alexa Fluor® 488 and Alexa Fluor® 647 conjugates, see **IGFBP3 (E-9): sc-374365**.