

# Grp (C-19): sc-6100

## BACKGROUND

Many growth factors function by binding receptors with intrinsic tyrosine kinase activity. Signaling by such receptors involves a series of intermediates characterized by SH2 domains that bind tyrosine phosphorylated receptors by a direct interaction between the SH2 domain and specific receptor sequences. For instance, the GRB family of proteins lack a defined catalytic activity and are entirely composed of SH2 and SH3 domains. Members include GRB2, GRB7, GRB10 (also referred to as GRB-IR), GRB14 and Grp (for GRB2-related adapter protein). While GRB10 and GRB14 are most closely related to GRB7, Grp shares the highest degree of homology with GRB2 exhibiting 59% sequence identity with GRB2. The Grp SH2 domain is capable of binding to the activated stem cell factor receptor, c-Kit and the erythropoietin receptor (EpoR). Grp also associates with the Ras guanine nucleotide exchange factor Sos 1 via its amino terminal SH3 domain.

## REFERENCES

- Schlessinger, J. and Ullrich, A. 1992. Growth factor signalling by receptor tyrosine kinases. *Neuron* 9: 383-391.
- Margolis, B., Silvennoinen, O., Comoglio, F., Roonprapunt, C., Skolnik, E., Ullrich, A., and Schlessinger, J. 1992. High-efficiency expression/cloning of epidermal growth factor-receptor-binding proteins with Src homology 2 domains. *Proc. Natl. Acad. Sci. USA* 89: 8894-8898.
- Fanti, W.J., Johnson, D.E., and Williams, L.T. 1993. Signalling by receptor tyrosine kinases. *Ann. Rev. Biochem.* 62: 453-481.
- Stein, D., Wu, J., Fuqua, S.A.W., Roonprapunt, C., Yajnik, V., D'Eustachio, P., Moskowitz, J.J., Buchberg, A.M., Osborne, C.K., and Margolis, B. 1994. The SH2 domain protein GRB7 is co-amplified, overexpressed and in a tight complex with HER2 in breast cancer. *EMBO J.* 13: 1331-1340.
- Ooi, J., Yajnik, V., Immanuel, D., Gordon, M., Moskowitz, J.J., Buchberg, A.M., and Margolis, B. 1995. The cloning of GRB10 reveals a new family of SH2 domain proteins. *Oncogene*. 10: 1621-1630.
- Daly, R.J., Sanderson, G.M., Janes, P.W., and Sutherland, R.L. 1996. Cloning and characterization of GRB14, a novel member of the GRB7 gene family. *J. Biol. Chem.* 271: 12502-12510.
- Feng, G.S., Ouyang, Y.B., Hu, D.P., Shi, Z.Q., Gentz, R., and Ni, J. 1996. Grp is a novel SH3-SH2-SH3 adaptor protein that couples tyrosine kinases to the Ras pathway. *J. Biol. Chem.* 271: 12129-12132.

## SOURCE

Grp (C-19) is an affinity purified goat polyclonal antibody raised against a peptide mapping at the C-terminus of GRB2-related adapter protein (Grp) of human origin.

## PRODUCT

Each vial contains 200 µg IgG in 1.0 ml of PBS with < 0.1% sodium azide and 0.1% gelatin.

Blocking peptide available for competition studies, sc-6100 P, (100 µg peptide in 0.5 ml PBS containing < 0.1% sodium azide and 0.2% BSA).

## APPLICATIONS

Grp (C-19) is recommended for detection of Grp of human and, to a lesser extent, mouse and rat origin by Western Blotting (starting dilution 1:200, dilution range 1:100-1:1000), immunoprecipitation [1-2 µg per 100-500 µg of total protein (1 ml of cell lysate)], immunofluorescence (starting dilution 1:50, dilution range 1:50-1:500) and solid phase ELISA (starting dilution 1:30, dilution range 1:30-1:3000).

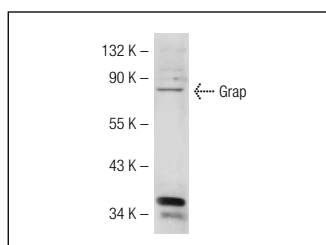
Grp (C-19) is also recommended for detection of Grp in additional species, including equine and porcine.

Suitable for use as control antibody for Grp siRNA (h): sc-40960, Grp shRNA Plasmid (h): sc-40960-SH and Grp shRNA (h) Lentiviral Particles: sc-40960-V.

## RECOMMENDED SECONDARY REAGENTS

To ensure optimal results, the following support (secondary) reagents are recommended: 1) Western Blotting: use donkey anti-goat IgG-HRP: sc-2020 (dilution range: 1:2000-1:100,000) or Cruz Marker™ compatible donkey anti-goat IgG-HRP: sc-2033 (dilution range: 1:2000-1:5000), Cruz Marker™ Molecular Weight Standards: sc-2035, TBS Blotto A Blocking Reagent: sc-2333 and Western Blotting Luminol Reagent: sc-2048. 2) Immunoprecipitation: use Protein A/G PLUS-Agarose: sc-2003 (0.5 ml agarose/2.0 ml). 3) Immunofluorescence: use donkey anti-goat IgG-FITC: sc-2024 (dilution range: 1:100-1:400) or donkey anti-goat IgG-TR: sc-2783 (dilution range: 1:100-1:400) with UltraCruz™ Mounting Medium: sc-24941.

## DATA



Grp (C-19): sc-6100. Western blot analysis of Grp expression in HeLa whole cell lysate.

## STORAGE

Store at 4° C, **\*\*DO NOT FREEZE\*\***. Stable for one year from the date of shipment. Non-hazardous. No MSDS required.

## RESEARCH USE

For research use only, not for use in diagnostic procedures.

## PROTOCOLS

See our web site at [www.scbt.com](http://www.scbt.com) or our catalog for detailed protocols and support products.