

PP1 γ (C-19): sc-6108

BACKGROUND

In eukaryotes, the phosphorylation and dephosphorylation of proteins on serine and threonine residues is an essential means of regulating a broad range of cellular functions, including division, homeostasis and apoptosis. A group of proteins that are intimately involved in this process are the protein phosphatases. In general, the protein phosphatase (PP) holoenzyme is a trimeric complex composed of a regulatory subunit, a variable subunit and a catalytic subunit. Four major families of protein phosphatase catalytic subunit have been identified, designated PP1, PP2A, PP2B (calcineurin) and PP2C. An additional protein phosphatase catalytic subunit, PPX (also known as PP4) is a putative member of a novel PP family. The PP1 family is comprised of subfamily members PP1 α , PP1 β and PP1 γ , which are MgATP-dependent enzymes. PP1 inactivity is maintained through its association with the inhibitory protein NIPP-1 (nuclear inhibitor of PP1). Phosphorylation of NIPP-1 by cAMP-PK or casein kinase II results in the release of active PP1.

CHROMOSOMAL LOCATION

Genetic locus: PPP1CC (human) mapping to 12q24.11; Ppp1cc (mouse) mapping to 5 F.

SOURCE

PP1 γ (C-19) is an affinity purified goat polyclonal antibody raised against a peptide mapping at the C-terminus of PP1 γ of human origin.

PRODUCT

Each vial contains 200 μ g IgG in 1.0 ml of PBS with < 0.1% sodium azide and 0.1% gelatin.

Blocking peptide available for competition studies, sc-6108 P, (100 μ g peptide in 0.5 ml PBS containing < 0.1% sodium azide and 0.2% BSA).

APPLICATIONS

PP1 γ (C-19) is recommended for detection of PP1 γ of mouse, rat and human origin by Western Blotting (starting dilution 1:200, dilution range 1:100-1:1000), immunoprecipitation [1-2 μ g per 100-500 μ g of total protein (1 ml of cell lysate)], immunofluorescence (starting dilution 1:50, dilution range 1:50-1:500) and solid phase ELISA (starting dilution 1:30, dilution range 1:30-1:3000).

PP1 γ (C-19) is also recommended for detection of PP1 γ in additional species, including equine, canine, bovine, porcine and avian.

Suitable for use as control antibody for PP1 γ siRNA (h): sc-36297, PP1 γ siRNA (m): sc-36298, PP1 γ shRNA Plasmid (h): sc-36297-SH, PP1 γ shRNA Plasmid (m): sc-36298-SH, PP1 γ shRNA (h) Lentiviral Particles: sc-36297-V and PP1 γ shRNA (m) Lentiviral Particles: sc-36298-V.

Molecular Weight of PP1 γ : 35 kDa.

Positive Controls: PP1 γ (h): 293T Lysate: sc-177762, CTLL-2 cell lysate: sc-2242 or SK-BR-3 cell lysate: sc-2218.

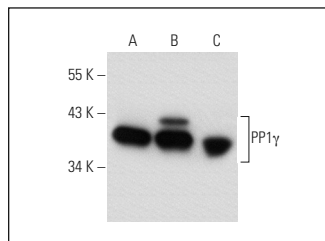
RESEARCH USE

For research use only, not for use in diagnostic procedures.

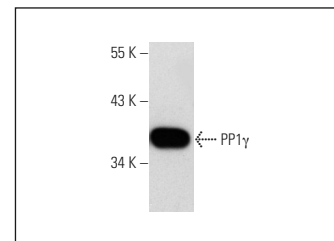
STORAGE

Store at 4° C, ****DO NOT FREEZE****. Stable for one year from the date of shipment. Non-hazardous. No MSDS required.

DATA



PP1 γ (C-19): sc-6108. Western blot analysis of PP1 γ expression in non-transfected 293T: sc-117752 (A), human PP1 γ transfected 293T: sc-177762 (B) and SK-BR-3 (C) whole cell lysates.



PP1 γ (C-19): sc-6108. Western blot analysis of PP1 γ expression in CTLL-2 whole cell lysates.

SELECT PRODUCT CITATIONS

- Patel, K.G., et al. 2001. Myr 8, a novel unconventional myosin expressed during brain development associates with the protein phosphatase catalytic subunits 1 α and 1 γ 1. *J. Neurosci.* 21: 7954-7968.
- Mi, J., et al. 2007. Protein phosphatase-1 α regulates centrosome splitting through Nek2. *Cancer Res.* 67: 1082-1089.
- Gao, Y., et al. 2008. Protein phosphatase-1 is targeted to DNA polymerase δ via an interaction with the p68 subunit. *Biochemistry* 47: 11367-11376.
- Gomes, A.V., et al. 2009. Contrasting proteome biology and functional heterogeneity of the 20S proteasome complexes in mammalian tissues. *Mol. Cell. Proteomics* 8: 302-315.
- Drexler, H.C. 2009. Synergistic apoptosis induction in leukemic cells by the phosphatase inhibitor salubrinal and proteasome inhibitors. *PLoS ONE* 4: e4161.
- Garcia-Haro, L., et al. 2010. The PP1-R6 protein phosphatase holoenzyme is involved in the glucose-induced dephosphorylation and inactivation of AMP-activated protein kinase, a key regulator of Insulin secretion, in MIN6 β cells. *FASEB J.* 24: 5080-5091.
- Zhang, F., et al. 2010. The African swine fever virus DP71L protein recruits the protein phosphatase 1 catalytic subunit to dephosphorylate eIF2 α and inhibits CHOP induction but is dispensable for these activities during virus infection. *J. Virol.* 84: 10681-10689.
- Shimada, M., et al. 2010. Protein phosphatase 1 γ is responsible for dephosphorylation of histone H3 at Thr 11 after DNA damage. *EMBO Rep.* 11: 883-889.
- Petrich, A., et al. 2013. Phosphorylation of threonine 333 regulates trafficking of the human sst5 somatostatin receptor. *Mol. Endocrinol.* 27: 671-682.
- Minnebo, N., et al. 2013. NIPP1 maintains EZH2 phosphorylation and promoter occupancy at proliferation-related target genes. *Nucleic Acids Res.* 41: 842-854.