

Mat1 (C-167): sc-6235

BACKGROUND

Progression through the cell cycle requires activation of a series of enzymes designated cyclin dependent kinases (Cdks). The monomeric catalytic subunit, Cdk2, a critical enzyme for initiation of cell cycle progression, is completely inactive. Partial activation is achieved by the binding of regulatory cyclins such as cyclin D1, while full activation requires phosphorylation at Thr-160. The enzyme responsible for phosphorylation of Thr-160 in Cdk2 and also Thr-161 in Cdc2 p34, designated Cdk-activating kinase (CAK), has been partially purified and shown to be comprised of a catalytic subunit, a regulatory subunit and a subunit of unknown function. The regulatory subunit is a novel cyclin (cyclin H) and is required for activation of Cdk7. This previously undescribed protein, now termed Mat1, has been cloned as a protein that associates with the cyclin H-Cdk7 nuclear complex at all stages of the cell cycle. Cyclin H-Cdk7-Mat1 complexes display kinase activity towards Cdk activation domains, and the carboxy terminus of RNA polymerase II. Mat1 appears to constitute the first example of an assembly factor, essential for the formation of an active Cdk-cyclin complex.

CHROMOSOMAL LOCATION

Genetic locus: MNAT1 (human) mapping to 14q23.1; Mnat1 (mouse) mapping to 12 C3.

SOURCE

Mat1 (C-167) is a rabbit polyclonal antibody raised against amino acids 167-309 mapping at the C-terminus of Mat1 of human origin.

PRODUCT

Each vial contains 200 µg IgG in 1.0 ml of PBS with < 0.1% sodium azide and 0.1% gelatin.

RESEARCH USE

For research use only, not for use in diagnostic procedures.

APPLICATIONS

Mat1 (C-167) is recommended for detection of Mat1 of mouse, rat and human origin by Western Blotting (starting dilution 1:200, dilution range 1:100-1:1000), immunoprecipitation [1-2 µg per 100-500 µg of total protein (1 ml of cell lysate)], immunofluorescence (starting dilution 1:50, dilution range 1:50-1:500) and solid phase ELISA (starting dilution 1:30, dilution range 1:30-1:3000).

Mat1 (C-167) is also recommended for detection of Mat1 in additional species, including equine, canine, bovine, porcine and avian.

Suitable for use as control antibody for Mat1 siRNA (h): sc-35861, Mat1 siRNA (m): sc-35862, Mat1 shRNA Plasmid (h): sc-35861-SH, Mat1 shRNA Plasmid (m): sc-35862-SH, Mat1 shRNA (h) Lentiviral Particles: sc-35861-V and Mat1 shRNA (m) Lentiviral Particles: sc-35862-V.

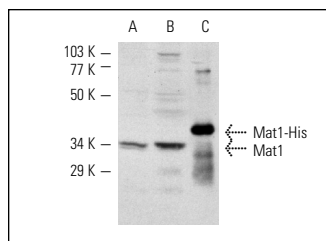
Molecular Weight of Mat1: 36 kDa.

Positive Controls: A-431 whole cell lysate: sc-2201, A-673 cell lysate: sc-2414 or NIH/3T3 whole cell lysate: sc-2210.

RECOMMENDED SECONDARY REAGENTS

To ensure optimal results, the following support (secondary) reagents are recommended: 1) Western Blotting: use goat anti-rabbit IgG-HRP: sc-2004 (dilution range: 1:2000-1:100,000) or Cruz Marker™ compatible goat anti-rabbit IgG-HRP: sc-2030 (dilution range: 1:2000-1:5000), Cruz Marker™ Molecular Weight Standards: sc-2035, TBS Blotto A Blocking Reagent: sc-2333 and Western Blotting Luminol Reagent: sc-2048. 2) Immunoprecipitation: use Protein A/G PLUS-Agarose: sc-2003 (0.5 ml agarose/2.0 ml). 3) Immunofluorescence: use goat anti-rabbit IgG-FITC: sc-2012 (dilution range: 1:100-1:400) or goat anti-rabbit IgG-TR: sc-2780 (dilution range: 1:100-1:400) with UltraCruz™ Mounting Medium: sc-24941.

DATA



Mat1 (C-167): sc-6235. Western blot analysis of Mat1 expression in A-431 (A) and NIH/3T3 (B) whole cell lysates and His-tagged human recombinant Mat1 (C).

STORAGE

Store at 4° C, **DO NOT FREEZE**. Stable for one year from the date of shipment. Non-hazardous. No MSDS required.

PROTOCOLS

See our web site at www.scbt.com or our catalog for detailed protocols and support products.

MONOS
Satisfaction
Guaranteed

Try **Mat1 (F-6): sc-13142** or **Mat1 (19): sc-136540**, our highly recommended monoclonal alternatives to Mat1 (C-167).