

Gelsolin (C-20): sc-6405



The Power to Question

BACKGROUND

Gelsolin (also known as brevin, actin-depolymerizing factor or ADF), a protein of leukocytes, platelets and other cells, severs actin filaments in the presence of submicromolar calcium, thereby isolating cytoplasmic actin gels. A calcium-independent mechanism reverses the process. A Gelsolin variant with 23 more amino-terminal amino acids is a plasma component probably involved in the clearance of actin, the most abundant human protein, from the circulation. It has been suggested that a single gene encodes both cell and plasma gelsolins. Gelsolin may be unique in that it is made for both secretion and intracytoplasmic location. Amino acid homology was identified between Gelsolin and the amyloid of the Finnish variety of amyloidosis. The amyloid in this disorder is antigenically and structurally related to Gelsolin. Gelsolin is the principal intracellular and extracellular actin-severing protein. Gelsolin and Gc protein together constitute the extracellular actin-scavenger system which prevents the toxic effects of actin release into the extracellular space under circumstances of cell necrosis.

CHROMOSOMAL LOCATION

Genetic locus: GSN (human) mapping to 9q33.2; Gsn (mouse) mapping to 2 B.

SOURCE

Gelsolin (C-20) is an affinity purified goat polyclonal antibody raised against a peptide mapping at the C-terminus of Gelsolin of human origin.

PRODUCT

Each vial contains 200 µg IgG in 1.0 ml of PBS with < 0.1% sodium azide and 0.1% gelatin.

Blocking peptide available for competition studies, sc-6405 P, (100 µg peptide in 0.5 ml PBS containing < 0.1% sodium azide and 0.2% BSA).

APPLICATIONS

Gelsolin (C-20) is recommended for detection of plasma and cytoplasmic Gelsolin of mouse, rat and human origin by Western Blotting (starting dilution 1:200, dilution range 1:100-1:1000), immunoprecipitation [1-2 µg per 100-500 µg of total protein (1 ml of cell lysate)], immunofluorescence (starting dilution 1:50, dilution range 1:50-1:500) and solid phase ELISA (starting dilution 1:30, dilution range 1:30-1:3000).

Gelsolin (C-20) is also recommended for detection of plasma and cytoplasmic Gelsolin in additional species, including equine, canine, bovine, porcine and avian.

Suitable for use as control antibody for Gelsolin siRNA (h): sc-37330, Gelsolin siRNA (m): sc-37331, Gelsolin shRNA Plasmid (h): sc-37330-SH, Gelsolin shRNA Plasmid (m): sc-37331-SH, Gelsolin shRNA (h) Lentiviral Particles: sc-37330-V and Gelsolin shRNA (m) Lentiviral Particles: sc-37331-V.

Molecular Weight of Gelsolin: 90 kDa.

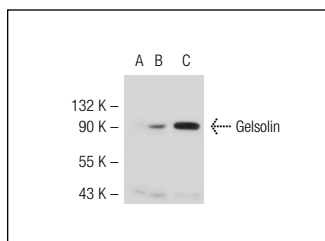
STORAGE

Store at 4° C, ****DO NOT FREEZE****. Stable for one year from the date of shipment. Non-hazardous. No MSDS required.

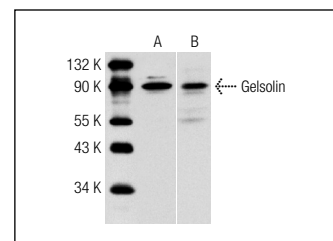
RESEARCH USE

For research use only, not for use in diagnostic procedures.

DATA



Gelsolin (C-20): sc-6405. Western blot analysis of Gelsolin expression in non-transfected 293T: sc-117752 (A), mouse Gelsolin transfected 293T: sc-126908 (B) and BJAB (C) whole cell lysates.



Western blot analysis of Gelsolin expression in BJAB whole cell lysates (A,B). Antibodies tested include Gelsolin (C-20): sc-6405 (A) and Gelsolin (N-18): sc-6406 (B).

SELECT PRODUCT CITATIONS

- Hernandez, M.R., et al. 2002. Differential gene expression in astrocytes from human normal and glaucomatous optic nerve head analyzed by cDNA microarray. *Glia* 38: 45-64.
- Rydziel, S., et al. 2004. AU-rich elements in the collagenase 3 mRNA mediate stabilization of the transcript by cortisol in osteoblasts. *J. Biol. Chem.* 279: 5397-5404.
- Strell, C., et al. 2006. The generation of locomotory forces in the spontaneous and norepinephrine induced migration of carcinoma cells. *Signal Transduction* 7: 270-278.
- Messaoudi, E., et al. 2007. Sustained Arc/Arg3.1 synthesis controls long-term potentiation consolidation through regulation of local actin polymerization in the dentate gyrus *in vivo*. *J. Neurosci.* 27: 10445-10455.
- Mizui, T., et al. 2009. Drebrin E is involved in the regulation of axonal growth through actin-myosin interactions. *J. Neurochem.* 109: 611-622.
- Finkelstein, M., et al. 2010. Role and regulation of sperm gelsolin prior to fertilization. *J. Biol. Chem.* 285: 39702-39709.
- Haverland, N., et al. 2010. Immunoreactivity of anti-gelsolin antibodies: implications for biomarker validation. *J. Transl. Med.* 8: 137.
- An, J.H., et al. 2011. Gelsolin negatively regulates the activity of tumor suppressor p53 through their physical interaction in hepatocarcinoma HepG2 cells. *Biochem. Biophys. Res. Commun.* 412: 44-49.
- Tenzer, S., et al. 2011. Nanoparticle size is a critical physicochemical determinant of the human blood plasma corona: a comprehensive quantitative proteomic analysis. *ACS Nano* 5: 7155-7167.

MONOS
Satisfaction
Guaranteed

Try **Gelsolin (F-5): sc-514502** or **Gelsolin (H-5): sc-398244**, our highly recommended monoclonal alternatives to Gelsolin (C-20).