

Radixin (C-15): sc-6408

BACKGROUND

Ezrin, Moesin and Radixin belong to a family of highly homologous actin-associated proteins that are localized just beneath the plasma membrane. The proteins are believed to be involved in the mediation of interactions between cytoskeletal and membrane proteins. Ezrin serves as a major cytoplasmic substrate of various protein-tyrosine kinases, including the epidermal growth factor receptor. Ezrin has also been identified as a cAMP-dependent protein kinase (A-kinase) anchoring protein and designated AKAP78. Moesin and Radixin share over 70% homology with Ezrin and are co-expressed within various cell types. Despite the high degree of homology, the three proteins exhibit a distinct receptor-specific pattern of phosphorylation.

SOURCE

Radixin (C-15) is an affinity purified goat polyclonal antibody raised against a peptide mapping at the C-terminus of Radixin of human origin.

PRODUCT

Each vial contains 200 µg IgG in 1.0 ml of PBS with < 0.1% sodium azide and 0.1% gelatin.

Blocking peptide available for competition studies, sc-6408 P, (100 µg peptide in 0.5 ml PBS containing < 0.1% sodium azide and 0.2% BSA).

APPLICATIONS

Radixin (C-15) is recommended for detection of Radixin and, to a lesser extent, Ezrin and Moesin of mouse, rat and human origin by Western Blotting (starting dilution 1:200, dilution range 1:100-1:1000), immunoprecipitation [1-2 µg per 100-500 µg of total protein (1 ml of cell lysate)], immunofluorescence (starting dilution 1:50, dilution range 1:50-1:500), immunohistochemistry (including paraffin-embedded sections) (starting dilution 1:50, dilution range 1:50-1:500) and solid phase ELISA (starting dilution 1:30, dilution range 1:30-1:3000).

Radixin (C-15) is also recommended for detection of radixin and, to a lesser extent, ezrin and moesin in additional species, including equine, canine, bovine and avian.

Suitable for use as control antibody for Radixin siRNA (h): sc-36366, Radixin siRNA (m): sc-36367, Radixin shRNA Plasmid (h): sc-36366-SH, Radixin shRNA Plasmid (m): sc-36367-SH, Radixin shRNA (h) Lentiviral Particles: sc-36366-V and Radixin shRNA (m) Lentiviral Particles: sc-36367-V.

Molecular Weight of Radixin: 82 kDa.

Positive Controls: Jurkat whole cell lysate: sc-2204, A-431 whole cell lysate: sc-2201 or HeLa whole cell lysate: sc-2200.

STORAGE

Store at 4° C, ****DO NOT FREEZE****. Stable for one year from the date of shipment. Non-hazardous. No MSDS required.

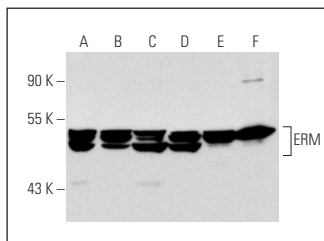
PROTOCOLS

See our web site at www.scbt.com or our catalog for detailed protocols and support products.

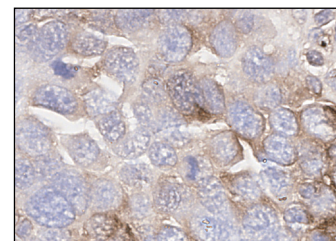
RESEARCH USE

For research use only, not for use in diagnostic procedures.

DATA



Radixin (C-15): sc-6408. Western blot analysis of ERM family members in A-431 (A), HeLa (B), Jurkat (C), NIH/3T3 (D) and F9 (E) whole cell lysates and rat liver extract (F).



Radixin (C-15): sc-6408. Immunoperoxidase staining of formalin-fixed, paraffin-embedded human ovarian tumor showing membrane staining.

SELECT PRODUCT CITATIONS

- Vaiskunaite, R., et al. 2000. Conformational activation of Radixin by G13 protein α subunit. *J. Biol. Chem.* 275: 26206-26212.
- Tokunou, M., et al. 2000. Altered expression of the ERM proteins in lung adenocarcinoma. *Lab. Invest.* 80: 1643-1650.
- Lozupone, F., et al. 2004. Identification and relevance of the CD95-binding domain in the N-terminal region of ezrin. *J. Biol. Chem.* 279: 9199-9207.
- Lan, M., et al. 2006. Phosphorylation of ezrin enhances microvillus length via a p38 MAP-kinase pathway in an immortalized mouse hepatic cell line. *Exp. Cell Res.* 312: 111-120.
- Fujimoto, T., et al. 2007. Analysis of KRAP expression and localization, and genes regulated by KRAP in a human colon cancer cell line. *J. Hum. Genet.* 52: 978-984.
- Liu, M., et al. 2008. Different binding characteristics of dengue-2 virus to midgut of *Aedes albopictus* (Diptera: Culicidae) and *Culex quinquefasciatus* (Diptera: Culicidae). *Appl. Entomol. Zool.* 43: 49-55.
- Fernando, H.S., et al. 2009. Expression of the ERM family members (ezrin, radixin and moesin) in breast cancer. *Exp. Ther. Med.* 1: 153-160.
- Kahsai, A.W., et al. 2010. G protein-coupled receptor kinase 2 activates radixin, regulating membrane protrusion and motility in epithelial cells. *Biochim. Biophys. Acta* 1803: 300-310.
- Bartholow, T.L., et al. 2011. Immunohistochemical staining of radixin and moesin in prostatic adenocarcinoma. *BMC Clin. Pathol.* 11: 1.
- Sperka, T., et al. 2011. Activation of Ras requires the ERM-dependent link of actin to the plasma membrane. *PLoS ONE* 6: e27511.
- Toms, A.M., et al. 2012. Distribution and expression of the ERM family members, ezrin, radixin, moesin and EHM2 in human colon cancer and the clinical relevance. *Transl. Gastrointest. Cancer* 1: 205-214.
- Moazzam, M., et al. 2015. Knockdown of WAVE3 impairs HGF induced migration and invasion of prostate cancer cells. *Cancer Cell Int.* 15: 51.