

Bcl-w (C-20): sc-6418

BACKGROUND

The Bcl-2 family of proteins is characterized by its ability to modulate cell death (apoptosis) under a broad range of physiological conditions. Bcl-2, A1 and Bcl-x_L function to inhibit apoptosis while other members of the Bcl-2 family, Bax, Bad, Bak and Bcl-x_S oppose their death-suppressing effects. Using a PCR-based strategy, an additional protein with life-promoting activity, designated Bcl-w, has been identified. The protein is highly conserved between mouse and human and is encoded by a gene located near the TCR α gene on chromosome 14. Bcl-w is expressed in myeloid cell lines but not in T and B lymphocytes, and can be found in a wide range of tissues. An alternative splicing event in exon 4 results in two transcripts. The first, Bcl-w, encodes a protein of 193 amino acids, and the second, Bcl-w/rox, encodes a protein 333 amino acids in length. The "rox" portion of Bcl-w/rox shows a striking 66% amino acid sequence identity with the *Drosophila rox2* protein; however, the Bcl-w/rox transcript may be expressed at very low levels.

REFERENCES

1. Yang, E., et al. 1995. Bad, a heterodimeric partner for Bcl-x_L and Bcl-2, displaces Bax and promotes cell death. *Cell* 80: 285-291.
2. Craig, R.W., 1995. The Bcl-2 gene family. *Semin. Cancer Biol.* 6: 35-43.
3. Sedlak, T.W., et al. 1995. Multiple Bcl-2 family members demonstrate selective dimerizations with Bax. *Proc. Natl. Acad. Sci. USA* 92: 7834-7838.
4. Brand, S.F., et al. 1995. Novel *Drosophila melanogaster* genes encoding RRM-type RNA-binding proteins identified by a degenerate PCR strategy. *Gene* 154: 187-192.
5. Gibson, L., et al. 1996. Bcl-w, a novel member of the Bcl-2 family, promotes cell survival. *Oncogene* 13: 665-675.
6. Karsan, A., et al. 1996. Cloning of human Bcl-2 homologue: inflammatory cytokines induce human $\alpha 1$ in cultured endothelial cells. *Blood* 87: 3089-3096.

CHROMOSOMAL LOCATION

Genetic locus: BCL2L2 (human) mapping to 14q11.2; Bcl2I2 (mouse) mapping to 14 C3.

SOURCE

Bcl-w (C-20) is an affinity purified goat polyclonal antibody raised against a peptide mapping at the C-terminus of Bcl-w of human origin.

PRODUCT

Each vial contains 200 μ g IgG in 1.0 ml of PBS with < 0.1% sodium azide and 0.1% gelatin.

Blocking peptide available for competition studies, sc-6418 P, (100 μ g peptide in 0.5 ml PBS containing < 0.1% sodium azide and 0.2% BSA).

STORAGE

Store at 4° C, ****DO NOT FREEZE****. Stable for one year from the date of shipment. Non-hazardous. No MSDS required.

APPLICATIONS

Bcl-w (C-20) is recommended for detection of Bcl-w of mouse, rat and human origin by Western Blotting (starting dilution 1:200, dilution range 1:100-1:1000), immunoprecipitation [1-2 μ g per 100-500 μ g of total protein (1 ml of cell lysate)], immunofluorescence (starting dilution 1:50, dilution range 1:50-1:500) and solid phase ELISA (starting dilution 1:30, dilution range 1:30-1:3000).

Bcl-w (C-20) is also recommended for detection of Bcl-w in additional species, including equine, canine, bovine and porcine.

Suitable for use as control antibody for Bcl-w siRNA (h): sc-37293, Bcl-w siRNA (m): sc-37294, Bcl-w shRNA Plasmid (h): sc-37293-SH, Bcl-w shRNA Plasmid (m): sc-37294-SH, Bcl-w shRNA (h) Lentiviral Particles: sc-37293-V and Bcl-w shRNA (m) Lentiviral Particles: sc-37294-V.

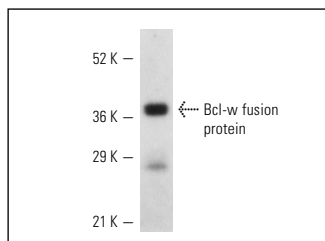
Molecular Weight of Bcl-w: 22 kDa.

Positive Controls: NIH/3T3 whole cell lysate: sc-2210.

RECOMMENDED SECONDARY REAGENTS

To ensure optimal results, the following support (secondary) reagents are recommended: 1) Western Blotting: use donkey anti-goat IgG-HRP: sc-2020 (dilution range: 1:2000-1:100,000) or Cruz Marker™ compatible donkey anti-goat IgG-HRP: sc-2033 (dilution range: 1:2000-1:5000), Cruz Marker™ Molecular Weight Standards: sc-2035, TBS Blotto A Blocking Reagent: sc-2333 and Western Blotting Luminol Reagent: sc-2048. 2) Immunoprecipitation: use Protein A/G PLUS-Agarose: sc-2003 (0.5 ml agarose/2.0 ml). 3) Immunofluorescence: use donkey anti-goat IgG-FITC: sc-2024 (dilution range: 1:100-1:400) or donkey anti-goat IgG-TR: sc-2783 (dilution range: 1:100-1:400) with UltraCruz™ Mounting Medium: sc-24941.

DATA



Bcl-w (C-20): sc-6418. Western blot analysis of human recombinant Bcl-w fusion protein.

RESEARCH USE

For research use only, not for use in diagnostic procedures.

MONOS
Satisfaction
Guaranteed

Try **Bcl-w (2E4): sc-293236**, our highly recommended monoclonal alternative to Bcl-w (C-20).