

AP-180 (M-18): sc-6435

BACKGROUND

Clathrin-coated pits and vesicles are assembled for receptor-mediated endocytosis through interaction with Clathrin associated protein complexes. Vesicle transport is mediated from the *trans*-Golgi network by the adapter complex AP-1 and from the plasma membrane by the AP-2 complex. The AP-1 and AP-2 adapter protein complexes consist of Clathrin binding Adaptin proteins. AP-180, also known as SNAP91 (synaptosomal-associated protein, 91kDa homolog (mouse)) or CALM, is a 907 amino acid cell membrane protein that contains an ENTH (epsin N-terminal homology) domain. AP-180 binds to Clathrin triskelia via its N-terminal clathrin binding site, inducing assembly into 60-70 nm coats. Existing as three alternatively spliced isoforms, the gene encoding AP-180 maps to human chromosome 6q14.2 and mouse chromosome 9 E3.1.

CHROMOSOMAL LOCATION

Genetic locus: SNAP91 (human) mapping to 6q14.2; Snap91 (mouse) mapping to 9.

SOURCE

AP-180 (M-18) is an affinity purified goat polyclonal antibody raised against a peptide mapping at the C-terminus of AP-180 of mouse origin.

PRODUCT

Each vial contains 200 µg IgG in 1.0 ml of PBS with < 0.1% sodium azide and 0.1% gelatin.

Blocking peptide available for competition studies, sc-6435 P, (100 µg peptide in 0.5 ml PBS containing < 0.1% sodium azide and 0.2% BSA).

STORAGE

Store at 4° C, ****DO NOT FREEZE****. Stable for one year from the date of shipment. Non-hazardous. No MSDS required.

APPLICATIONS

AP-180 (M-18) is recommended for detection of AP-180 of mouse, rat and human origin by Western Blotting (starting dilution 1:200, dilution range 1:100-1:1000), immunoprecipitation [1-2 µg per 100-500 µg of total protein (1 ml of cell lysate)], immunofluorescence (starting dilution 1:50, dilution range 1:50-1:500) and solid phase ELISA (starting dilution 1:30, dilution range 1:30-1:3000).

AP-180 (M-18) is also recommended for detection of AP-180 in additional species, including equine, canine, bovine, porcine and avian.

Suitable for use as control antibody for AP-180 siRNA (h): sc-29698, AP-180 siRNA (m): sc-29699, AP-180 shRNA Plasmid (h): sc-29698-SH, AP-180 shRNA Plasmid (m): sc-29699-SH, AP-180 shRNA (h) Lentiviral Particles: sc-29698-V and AP-180 shRNA (m) Lentiviral Particles: sc-29699-V.

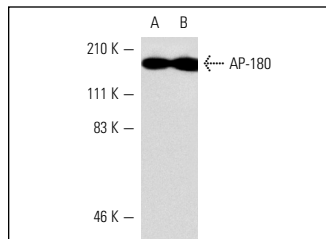
Molecular Weight of AP-180: 180 kDa.

Positive Controls: HeLa whole cell lysate: sc-2200, NIH/3T3 whole cell lysate: sc-2210 or IMR-32 cell lysate: sc-2409.

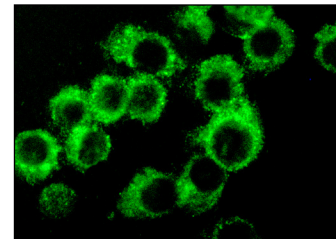
RECOMMENDED SECONDARY REAGENTS

To ensure optimal results, the following support (secondary) reagents are recommended: 1) Western Blotting: use donkey anti-goat IgG-HRP: sc-2020 (dilution range: 1:2000-1:100,000) or Cruz Marker™ compatible donkey anti-goat IgG-HRP: sc-2033 (dilution range: 1:2000-1:5000), Cruz Marker™ Molecular Weight Standards: sc-2035, TBS Blotto A Blocking Reagent: sc-2333 and Western Blotting Luminol Reagent: sc-2048. 2) Immunoprecipitation: use Protein A/G PLUS-Agarose: sc-2003 (0.5 ml agarose/2.0 ml). 3) Immunofluorescence: use donkey anti-goat IgG-FITC: sc-2024 (dilution range: 1:100-1:400) or donkey anti-goat IgG-TR: sc-2783 (dilution range: 1:100-1:400) with UltraCruz™ Mounting Medium: sc-24941.

DATA



AP-180 (M-18): sc-6435. Western blot analysis of AP-180 expression in HeLa (A) and NIH/3T3 (B) whole cell lysates.



AP-180 (M-18): sc-6435. Immunofluorescence staining of methanol-fixed NIH/3T3 cells showing cytoplasmic localization.

RESEARCH USE

For research use only, not for use in diagnostic procedures.

PROTOCOLS

See our web site at www.scbt.com or our catalog for detailed protocols and support products.

MONOS
Satisfaction
Guaranteed

Try **AP-180 (AP180-I): sc-58229** or **AP-180 (B-10): sc-393266**, our highly recommended monoclonal alternatives to AP-180 (M-18).