

AKAP 220 (R-20): sc-6443

BACKGROUND

The type II cAMP-protein kinase (PKA) is a multifunctional kinase with a broad range of substrates. Specificity of PKA signaling is thought to be mediated by the compartmentalization of the kinase to specific sites within the cell. To maintain this specific localization, the R subunit (RII) of PKA interacts with specific RII-anchoring proteins. This family of proteins has been designated A-kinase anchoring proteins (AKAP). Members of this family, including MAP2 (microtubule-associated protein 2), neuronally expressed AKAP 79 and AKAP 150, and the DNA binding AKAP 95, display differential tissue specificity and localization. AKAP 220, may play a role in cAMP-responsive peroxisomal events by targeting type II PKA.

REFERENCES

1. Scott, J.D., et al. 1990. Type II regulatory subunit dimerization determines the subcellular localization of the cAMP-dependent protein kinase. *J. Biol. Chem.* 265: 21561-21566.
2. Carr, D.W., et al. 1992. Localization of the cAMP-dependent protein kinase to the postsynaptic densities by A-kinase anchoring proteins. Characterization of AKAP 79. *J. Biol. Chem.* 267: 16816-16823.
3. Coghlan, V.M., et al. 1993. A-kinase anchoring proteins: a key to selective activation of cAMP-responsive events? *Mol. Cell. Biochem.* 127: 309-319.
4. Coghlan, V.M., et al. 1994. Cloning and characterization of AKAP 95, a nuclear protein that associates with the regulatory subunit of type II cAMP-dependent protein kinase. *J. Biol. Chem.* 269: 7658-7665.
5. Coghlan, V.M., et al. 1995. Association of protein kinase A and protein phosphatase 2B with a common anchoring protein. *Science* 267: 108-111.
6. Lester, L.B., et al. 1996. Cloning and characterization of a novel A-kinase anchoring protein. AKAP 220, association with testicular peroxisomes. *J. Biol. Chem.* 271: 9460-9465.

CHROMOSOMAL LOCATION

Genetic locus: Akap11 (mouse) mapping to 14 D3.

SOURCE

AKAP 220 (R-20) is an affinity purified goat polyclonal antibody raised against a peptide mapping at the C-terminus of AKAP 220 of rat origin.

PRODUCT

Each vial contains 200 µg IgG in 1.0 ml of PBS with < 0.1% sodium azide and 0.1% gelatin.

Blocking peptide available for competition studies, sc-6443 P, (100 µg peptide in 0.5 ml PBS containing < 0.1% sodium azide and 0.2% BSA).

STORAGE

Store at 4° C, **DO NOT FREEZE**. Stable for one year from the date of shipment. Non-hazardous. No MSDS required.

RESEARCH USE

For research use only, not for use in diagnostic procedures.

APPLICATIONS

AKAP 220 (R-20) is recommended for detection of AKAP 220 of mouse and rat origin by Western Blotting (starting dilution 1:200, dilution range 1:100-1:1000), immunofluorescence (starting dilution 1:50, dilution range 1:50-1:500), immunohistochemistry (including paraffin-embedded sections) (starting dilution 1:50, dilution range 1:50-1:500) and solid phase ELISA (starting dilution 1:30, dilution range 1:30-1:3000).

Suitable for use as control antibody for AKAP 220 siRNA (m): sc-40304, AKAP 220 shRNA Plasmid (m): sc-40304-SH and AKAP 220 shRNA (m) Lentiviral Particles: sc-40304-V.

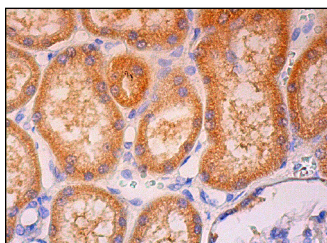
Molecular Weight of AKAP 220: 220 kDa.

Positive Controls: rat brain extract: sc-2392, rat testis extract: sc-2400 or KNRK whole cell lysate: sc-2214.

RECOMMENDED SECONDARY REAGENTS

To ensure optimal results, the following support (secondary) reagents are recommended: 1) Western Blotting: use donkey anti-goat IgG-HRP: sc-2020 (dilution range: 1:2000-1:100,000) or Cruz Marker™ compatible donkey anti-goat IgG-HRP: sc-2033 (dilution range: 1:2000-1:5000), Cruz Marker™ Molecular Weight Standards: sc-2035, TBS Blotto A Blocking Reagent: sc-2333 and Western Blotting Luminol Reagent: sc-2048. 2) Immunofluorescence: use donkey anti-goat IgG-FITC: sc-2024 (dilution range: 1:100-1:400) or donkey anti-goat IgG-TR: sc-2783 (dilution range: 1:100-1:400) with UltraCruz™ Mounting Medium: sc-24941. 3) Immunohistochemistry: use ImmunoCruz™: sc-2053 or ABC: sc-2023 goat IgG Staining Systems.

DATA



AKAP 220 (R-20): sc-6443. Immunoperoxidase staining of formalin fixed, paraffin-embedded human kidney tissue showing cytoplasmic staining of cells in tubules.

PROTOCOLS

See our web site at www.scbt.com or our catalog for detailed protocols and support products.