

casein kinase I δ (N-19): sc-6475

BACKGROUND

Casein kinase I (also designated CKI) and casein kinase II (also designated CKII) compose a family of serine/ threonine protein kinases which are present in all eukaryotes examined to date. CKI family members, which include CKI α , γ , ϵ and δ , have been implicated in the control of cytoplasmic and nuclear processes, including DNA replication and repair. CKII is usually expressed as a tetrameric complex consisting of either an $\alpha 2\beta 2$ or an $\alpha\alpha'\beta 2$ structure. The α catalytic subunit is stimulated by the β regulatory subunit, which undergoes autophosphorylation. CKII activity is high in the cytosol and nucleus of proliferating and differentiating cells. CKII is known to phosphorylate more than 100 different substrates including nuclear oncoproteins, transcription factors and enzymes involved in DNA metabolism.

REFERENCES

- Lozeman, F.J., et al. 1990. Isolation and characterization of human cDNA clones encoding the α and the α' subunits of casein kinase II. *Biochemistry* 29: 8436-8447.
- Tuazon, P.T., et al. 1991. Casein kinase I and II—multipotential serine protein kinases: structure, function, and regulation. *Adv. Second Messenger Phosphoprotein Res.* 23: 123-164.
- Litchfield, D.W., et al. 1993. Casein kinase II in signal transduction and cell cycle regulation. *Mol. Cell. Biochem.* 127-128: 187-199.
- Graves, P.R., et al. 1993. Molecular cloning, expression, and characterization of a 49 kDa casein kinase I isoform from rat testis. *J. Biol. Chem.* 268: 6394-6401.
- Zhai, L., et al. 1995. Casein kinase I γ subfamily. Molecular cloning, expression, and characterization of three mammalian isoforms and complementation of defects in the *Saccharomyces cerevisiae* YCK genes. *J. Biol. Chem.* 270: 12717-12724.

CHROMOSOMAL LOCATION

Genetic locus: CSNK1D (human) mapping to 17q25.3, CSNK1E (human) mapping to 22q13.1; Csnk1d (mouse) mapping to 11 E2, Csnk1e (mouse) mapping to 15 E1.

SOURCE

casein kinase I δ (N-19) is an affinity purified goat polyclonal antibody raised against a peptide mapping at the N-terminus of casein kinase I δ of human origin.

PRODUCT

Each vial contains 200 μ g IgG in 1.0 ml of PBS with < 0.1% sodium azide and 0.1% gelatin.

Blocking peptide available for competition studies, sc-6475 P, (100 μ g peptide in 0.5 ml PBS containing < 0.1% sodium azide and 0.2% BSA).

STORAGE

Store at 4° C, **DO NOT FREEZE**. Stable for one year from the date of shipment. Non-hazardous. No MSDS required.

APPLICATIONS

casein kinase I δ (N-19) is recommended for detection of casein kinase I δ and casein kinase I ϵ of mouse, rat and human origin by Western Blotting (starting dilution 1:200, dilution range 1:100-1:1000), immunoprecipitation [1-2 μ g per 100-500 μ g of total protein (1 ml of cell lysate)], immunofluorescence (starting dilution 1:50, dilution range 1:50-1:500), immunohistochemistry (including paraffin-embedded sections) (starting dilution 1:50, dilution range 1:50-1:500) and solid phase ELISA (starting dilution 1:30, dilution range 1:30-1:3000).

casein kinase I δ (N-19) is also recommended for detection of casein kinase I δ and casein kinase I ϵ in additional species, including equine, canine, bovine, porcine and avian.

Molecular Weight of casein kinase I δ : 49 kDa.

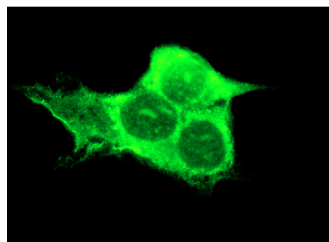
Molecular Weight of casein kinase I δ C-terminal degradation product: 42 kDa.

Positive Controls: rat testis extract: sc-2400, HeLa whole cell lysate: sc-2200 or K-562 whole cell lysate: sc-2203.

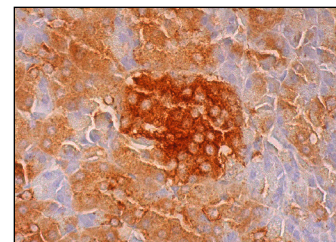
RECOMMENDED SECONDARY REAGENTS

To ensure optimal results, the following support (secondary) reagents are recommended: 1) Western Blotting: use donkey anti-goat IgG-HRP: sc-2020 (dilution range: 1:2000-1:100,000) or Cruz Marker™ compatible donkey anti-goat IgG-HRP: sc-2033 (dilution range: 1:2000-1:5000), Cruz Marker™ Molecular Weight Standards: sc-2035, TBS Blotto A Blocking Reagent: sc-2333 and Western Blotting Luminol Reagent: sc-2048. 2) Immunoprecipitation: use Protein A/G PLUS-Agarose: sc-2003 (0.5 ml agarose/2.0 ml). 3) Immunofluorescence: use donkey anti-goat IgG-FITC: sc-2024 (dilution range: 1:100-1:400) or donkey anti-goat IgG-TR: sc-2783 (dilution range: 1:100-1:400) with UltraCruz™ Mounting Medium: sc-24941. 4) Immunohistochemistry: use ImmunoCruz™: sc-2053 or ABC: sc-2023 goat IgG Staining Systems.

DATA



casein kinase I δ (N-19): sc-6475. Immunofluorescence staining of methanol-fixed NIH/3T3 cells showing cytoplasmic localization.



casein kinase I δ (N-19): sc-6475. Immunoperoxidase staining of formalin fixed, paraffin-embedded human pancreas tissue showing cytoplasmic staining of exocrine glandular cells and islets of Langerhans.

RESEARCH USE

For research use only, not for use in diagnostic procedures.

PROTOCOLS

See our web site at www.scbt.com or our catalog for detailed protocols and support products.