

casein kinase II β (C-19): sc-6483

BACKGROUND

Casein kinase I (also designated CKI) and casein kinase II (CKII) compose a family of serine/threonine protein kinases which are present in all eukaryotes examined to date. Casein kinase I family members, which include casein kinase I α , I γ , I δ and I ϵ , have been implicated in the control of cytoplasmic and nuclear processes, including DNA replication and repair. CKII is usually expressed as a tetrameric complex consisting of either an α 2 β 2 or an α α' β 2 structure. The α catalytic subunit is stimulated by the β regulatory subunit, which undergoes autophosphorylation. Casein kinase II activity is high in the cytosol and nucleus of proliferating and differentiating cells. Casein kinase II is known to phosphorylate more than 100 different substrates including nuclear oncoproteins, transcription factors and enzymes involved in DNA metabolism.

REFERENCES

- Lozeman, F.J., et al. 1990. Isolation and characterization of human cDNA clones encoding the α and the α' subunits of casein kinase II. *Biochemistry* 29: 8436-8447.
- Tuazon, P.T., et al. 1991. Casein kinase I and II—multipotential serine protein kinases: structure, function, and regulation. *Adv. Second Messenger Phosphoprotein Res.* 23: 123-164.
- Litchfield, D.W., et al. 1993. Casein kinase II in signal transduction and cell cycle regulation. *Mol. Cell. Biochem.* 127-128: 187-199.
- Graves, P.R., et al. 1993. Molecular cloning, expression, and characterization of a 49 kDa casein kinase I isoform from rat testis. *J. Biol. Chem.* 268: 6394-6401.

CHROMOSOMAL LOCATION

Genetic locus: CSNK2B (human) mapping to 6p21.33; Csnk2b (mouse) mapping to 17 B1.

SOURCE

casein kinase II β (C-19) is an affinity purified goat polyclonal antibody raised against a peptide mapping at the C-terminus of casein kinase II β of human origin.

PRODUCT

Each vial contains 200 μ g IgG in 1.0 ml of PBS with < 0.1% sodium azide and 0.1% gelatin.

Blocking peptide available for competition studies, sc-6483 P, (100 μ g peptide in 0.5 ml PBS containing < 0.1% sodium azide and 0.2% BSA).

STORAGE

Store at 4° C, **DO NOT FREEZE**. Stable for one year from the date of shipment. Non-hazardous. No MSDS required.

RESEARCH USE

For research use only, not for use in diagnostic procedures.

APPLICATIONS

casein kinase II β (C-19) is recommended for detection of casein kinase II β of mouse, rat and human origin by Western Blotting (starting dilution 1:200, dilution range 1:100-1:1000), immunofluorescence (starting dilution 1:50, dilution range 1:50-1:500), immunohistochemistry (including paraffin-embedded sections) (starting dilution 1:50, dilution range 1:50-1:500) and solid phase ELISA (starting dilution 1:30, dilution range 1:30-1:3000).

casein kinase II β (C-19) is also recommended for detection of casein kinase II β in additional species, including equine, canine, bovine, porcine and avian.

Suitable for use as control antibody for casein kinase II β siRNA (h): sc-29916, casein kinase II β siRNA (m): sc-29917, casein kinase II β shRNA Plasmid (h): sc-29916-SH, casein kinase II β shRNA Plasmid (m): sc-29917-SH, casein kinase II β shRNA (h) Lentiviral Particles: sc-29916-V and casein kinase II β shRNA (m) Lentiviral Particles: sc-29917-V.

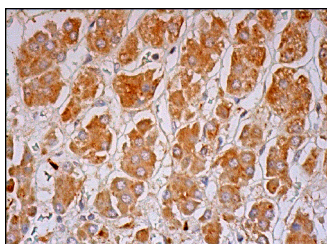
Molecular Weight of casein kinase II β : 28 kDa.

Positive Controls: HeLa whole cell lysate: sc-2200, MCF7 whole cell lysate: sc-2206 or Hep G2 cell lysate: sc-2227.

RECOMMENDED SECONDARY REAGENTS

To ensure optimal results, the following support (secondary) reagents are recommended: 1) Western Blotting: use donkey anti-goat IgG-HRP: sc-2020 (dilution range: 1:2000-1:100,000) or Cruz Marker™ compatible donkey anti-goat IgG-HRP: sc-2033 (dilution range: 1:2000-1:5000), Cruz Marker™ Molecular Weight Standards: sc-2035, TBS Blotto A Blocking Reagent: sc-2333 and Western Blotting Luminol Reagent: sc-2048. 2) Immunofluorescence: use donkey anti-goat IgG-FITC: sc-2024 (dilution range: 1:100-1:400) or donkey anti-goat IgG-TR: sc-2783 (dilution range: 1:100-1:400) with UltraCruz™ Mounting Medium: sc-24941. 3) Immunohistochemistry: use ImmunoCruz™: sc-2053 or ABC: sc-2023 goat IgG Staining Systems.

DATA



casein kinase II β (C-19): sc-6483. Immunoperoxidase staining of formalin fixed, paraffin-embedded human adrenal gland tissue showing cytoplasmic staining of glandular cells.

SELECT PRODUCT CITATIONS

- Zehbe, I., et al. 2005. Differential MHC class II component expression in HPV-positive cervical cancer cells: Implication for immune surveillance. *Int. J. Cancer* 117: 807-815.