

# CLIC3 (D-20): sc-65039

## BACKGROUND

CLIC3 (chloride intracellular channel protein 3) is a member of the highly conserved family of chloride ion channels (CLICs) that function in both soluble and integral membrane forms. Chloride channels regulate cellular traffic of chloride ions, a critical component of all living cells. They are involved in membrane potential stabilization, signal transduction, cell volume regulation and organic solute transport. CLIC3 is found in a variety of tissues but is highly expressed in placenta, brain and heart. CLIC3 predominantly localizes to the nucleus and stimulates chloride ion channel activity when expressed in cells. In addition, CLIC3 interacts with ERK 7 and may play a role in the regulation of cell proliferation. CLIC3 has a short hydrophobic domain, suggesting that it must multimerize or associate with other proteins if it functions in a membrane channel. Another possibility is that CLIC3 acts as a channel regulator.

## CHROMOSOMAL LOCATION

Genetic locus: CLIC3 (human) mapping to 9q34.3; Clc3 (mouse) mapping to 2 A3.

## SOURCE

CLIC3 (D-20) is an affinity purified goat polyclonal antibody raised against a peptide mapping within an internal region of CLIC3 of human origin.

## PRODUCT

Each vial contains 200 µg IgG in 1.0 ml of PBS with < 0.1% sodium azide and 0.1% gelatin.

Blocking peptide available for competition studies, sc-65039 P, (100 µg peptide in 0.5 ml PBS containing < 0.1% sodium azide and 0.2% BSA).

## STORAGE

Store at 4° C, **\*\*DO NOT FREEZE\*\***. Stable for one year from the date of shipment. Non-hazardous. No MSDS required.

## APPLICATIONS

CLIC3 (D-20) is recommended for detection of CLIC3 of mouse and human origin by Western Blotting (starting dilution 1:200, dilution range 1:100-1:1000), immunoprecipitation [1-2 µg per 100-500 µg of total protein (1 ml of cell lysate)], immunofluorescence (starting dilution 1:50, dilution range 1:50-1:500) and solid phase ELISA (starting dilution 1:30, dilution range 1:30-1:3000).

CLIC3 (D-20) is also recommended for detection of CLIC3 in additional species, including equine, canine and bovine.

Suitable for use as control antibody for CLIC3 siRNA (h): sc-62126, CLIC3 siRNA (m): sc-62127, CLIC3 shRNA Plasmid (h): sc-62126-SH, CLIC3 shRNA Plasmid (m): sc-62127-SH, CLIC3 shRNA (h) Lentiviral Particles: sc-62126-V and CLIC3 shRNA (m) Lentiviral Particles: sc-62127-V.

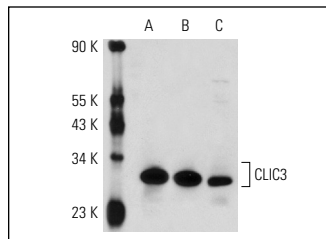
Molecular Weight of CLIC3: 27 kDa.

Positive Controls: JAR cell lysate: sc-2276, JEG-3 whole cell lysate: sc-364255 or mouse lung extract: sc-2390.

## RECOMMENDED SECONDARY REAGENTS

To ensure optimal results, the following support (secondary) reagents are recommended: 1) Western Blotting: use donkey anti-goat IgG-HRP: sc-2020 (dilution range: 1:2000-1:100,000) or Cruz Marker™ compatible donkey anti-goat IgG-HRP: sc-2033 (dilution range: 1:2000-1:5000), Cruz Marker™ Molecular Weight Standards: sc-2035, TBS Blotto A Blocking Reagent: sc-2333 and Western Blotting Luminol Reagent: sc-2048. 2) Immunoprecipitation: use Protein A/G PLUS-Agarose: sc-2003 (0.5 ml agarose/2.0 ml). 3) Immunofluorescence: use donkey anti-goat IgG-FITC: sc-2024 (dilution range: 1:100-1:400) or donkey anti-goat IgG-TR: sc-2783 (dilution range: 1:100-1:400) with UltraCruz™ Mounting Medium: sc-24941.

## DATA



CLIC3 (D-20): sc-65039. Western blot analysis of CLIC3 expression in JAR (A) and JEG-3 (B) whole cell lysates and mouse lung tissue extract (C).

## RESEARCH USE

For research use only, not for use in diagnostic procedures.

## PROTOCOLS

See our web site at [www.scbt.com](http://www.scbt.com) or our catalog for detailed protocols and support products.


 MONOS  
Satisfaction  
Guaranteed

Try **CLIC3 (D-11): sc-390006** or **CLIC3 (405): sc-81872**, our highly recommended monoclonal alternatives to CLIC3 (D-20).