

cathepsin E (S-19): sc-6510

BACKGROUND

The cathepsin family of proteolytic enzymes contains several diverse classes of proteases. The cysteine protease class comprises cathepsins B, L, H, K, S, and O. The aspartyl protease class is composed of cathepsins D and E. Cathepsin G is in the serine protease class. Most cathepsins are lysosomal and each is involved in cellular metabolism, participating in various events such as peptide biosynthesis and protein degradation. Cathepsin E is a non-lysosomal, intracellular proteinase.

REFERENCES

1. Ishidoh, K., et al. 1987. Molecular cloning and sequencing of cDNA for rat cathepsin L. FEBS Lett. 223: 69-73.
2. Ishidoh, K., et al. 1987. Molecular cloning and sequencing of cDNA for rat cathepsin H. Homology in pro-peptide regions of cysteine proteases. FEBS Lett. 226: 33-37.
3. Redecker, B., et al. 1991. Molecular organization of the human cathepsin D gene. DNA Cell Biol. 10: 423-431.
4. Shi, G.P., et al. 1992. Molecular cloning and expression of human alveolar macrophage cathepsin S, an elastinolytic cysteine protease. J. Biol. Chem. 267: 7258-7262.
5. Heusel, J.W., et al. 1993. Molecular cloning, chromosomal location, and tissue-specific expression of the murine cathepsin G gene. Blood 81: 1614-1623.
6. Guenette, R.S., et al. 1994. Cathepsin B, a cysteine protease implicated in metastatic progression, is also expressed during regression of the rat prostate and mammary glands. Eur. J. Biochem. 226: 311-321.
7. Shi, G.P., et al. 1995. Molecular cloning of human cathepsin O, a novel endoproteinase and homologue of rabbit OC2. FEBS Lett. 357: 129-134.

CHROMOSOMAL LOCATION

Genetic locus: CTSE (human) mapping to 1q32.1; Ctse (mouse) mapping to 1 E4.

SOURCE

cathepsin E (S-19) is an affinity purified goat polyclonal antibody raised against a peptide mapping near the N-terminus of cathepsin E of rat origin.

PRODUCT

Each vial contains 200 µg IgG in 1.0 ml of PBS with < 0.1% sodium azide and 0.1% gelatin.

Blocking peptide available for competition studies, sc-6510 P, (100 µg peptide in 0.5 ml PBS containing < 0.1% sodium azide and 0.2% BSA).

STORAGE

Store at 4° C, ****DO NOT FREEZE****. Stable for one year from the date of shipment. Non-hazardous. No MSDS required.

RESEARCH USE

For research use only, not for use in diagnostic procedures.

APPLICATIONS

cathepsin E (S-19) is recommended for detection of cathepsin E of mouse, rat and human origin by Western Blotting (starting dilution 1:200, dilution range 1:100-1:1000), immunoprecipitation [1-2 µg per 100-500 µg of total protein (1 ml of cell lysate)], immunofluorescence (starting dilution 1:50, dilution range 1:50-1:500) and solid phase ELISA (starting dilution 1:30, dilution range 1:30-1:3000).

Suitable for use as control antibody for cathepsin E siRNA (h): sc-41473, cathepsin E siRNA (m): sc-41474, cathepsin E shRNA Plasmid (h): sc-41473-SH, cathepsin E shRNA Plasmid (m): sc-41474-SH, cathepsin E shRNA (h) Lentiviral Particles: sc-41473-V and cathepsin E shRNA (m) Lentiviral Particles: sc-41474-V.

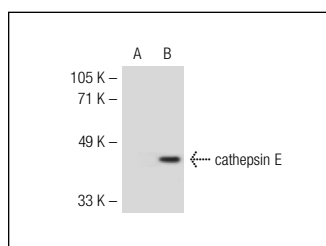
Molecular Weight of cathepsin E: 48 kDa.

Positive Controls: cathepsin E (h): 293T Lysate: sc-115648.

RECOMMENDED SECONDARY REAGENTS

To ensure optimal results, the following support (secondary) reagents are recommended: 1) Western Blotting: use donkey anti-goat IgG-HRP: sc-2020 (dilution range: 1:2000-1:100,000) or Cruz Marker™ compatible donkey anti-goat IgG-HRP: sc-2033 (dilution range: 1:2000-1:5000), Cruz Marker™ Molecular Weight Standards: sc-2035, TBS Blotto A Blocking Reagent: sc-2333 and Western Blotting Luminol Reagent: sc-2048. 2) Immunoprecipitation: use Protein A/G PLUS-Agarose: sc-2003 (0.5 ml agarose/2.0 ml). 3) Immunofluorescence: use donkey anti-goat IgG-FITC: sc-2024 (dilution range: 1:100-1:400) or donkey anti-goat IgG-TR: sc-2783 (dilution range: 1:100-1:400) with UltraCruz™ Mounting Medium: sc-24941.

DATA



cathepsin E (S-19): sc-6510. Western blot analysis of cathepsin E expression in non-transfected: sc-11752 (A) and human cathepsin E transfected: sc-115648 (B) 293T whole cell lysates.

PROTOCOLS

See our web site at www.scbt.com or our catalog for detailed protocols and support products.

MONOS
Satisfaction
Guaranteed

Try **cathepsin E (D-8): sc-166500** or **cathepsin E (E-8): sc-166343**, our highly recommended monoclonal alternatives to cathepsin E (S-19).