

LASS2 (E-15): sc-65102

BACKGROUND

The LASS (longevity assurance homolog) family members are highly conserved from yeasts to mammals. Six members of this family of proteins involved in sphingolipid synthesis have been characterized (LASS1, LASS2, LASS3, LASS4, LASS5 and LASS6). LASS2 is a 380 amino acid multi-pass membrane protein expressed in kidney, liver, brain, heart, placenta and lung. LASS2 suppresses the growth of cancer cells and is involved in sphingolipid synthesis. Overproduction of LASS2 increases the levels of long ceramides such as C22:0- and C24:0-ceramides. The N-terminal asparagine residue serves as a site for glycosylation on the luminal side of the endoplasmic reticulum membrane. LASS2 interacts with several membrane-associated receptors or transporters including ASGPR1, ASGPR2 and OCT1.

CHROMOSOMAL LOCATION

Genetic locus: CERS2 (human) mapping to 1q21.3; Lass2 (mouse) mapping to 3 F2.1.

SOURCE

LASS2 (E-15) is an affinity purified goat polyclonal antibody raised against a peptide mapping within an internal region of LASS2 of human origin.

PRODUCT

Each vial contains 200 µg IgG in 1.0 ml of PBS with < 0.1% sodium azide and 0.1% gelatin. Also available as TransCruz reagent for Gel Supershift and ChIP applications, sc-65102 X, 200 µg/0.1 ml.

Blocking peptide available for competition studies, sc-65102 P, (100 µg peptide in 0.5 ml PBS containing < 0.1% sodium azide and 0.2% BSA).

RESEARCH USE

For research use only, not for use in diagnostic procedures.

APPLICATIONS

LASS2 (E-15) is recommended for detection of LASS2 of mouse, rat and human origin by Western Blotting (starting dilution 1:200, dilution range 1:100-1:1000), immunofluorescence (starting dilution 1:50, dilution range 1:50-1:500), immunohistochemistry (including paraffin-embedded sections) (starting dilution 1:50, dilution range 1:50-1:500) and solid phase ELISA (starting dilution 1:30, dilution range 1:30-1:3000).

LASS2 (E-15) is also recommended for detection of LASS2 in additional species, including equine, canine and porcine.

Suitable for use as control antibody for LASS2 siRNA (h): sc-62545, LASS2 siRNA (m): sc-62546, LASS2 shRNA Plasmid (h): sc-62545-SH, LASS2 shRNA Plasmid (m): sc-62546-SH, LASS2 shRNA (h) Lentiviral Particles: sc-62545-V and LASS2 shRNA (m) Lentiviral Particles: sc-62546-V.

LASS2 (E-15) X TransCruz antibody is recommended for Gel Supershift and ChIP applications.

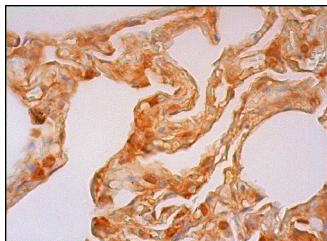
Molecular Weight of LASS2: 45 kDa.

Positive Controls: Hep G2 cell lysate: sc-2227, K-562 whole cell lysate: sc-2203 or Jurkat whole cell lysate: sc-2204.

RECOMMENDED SECONDARY REAGENTS

To ensure optimal results, the following support (secondary) reagents are recommended: 1) Western Blotting: use donkey anti-goat IgG-HRP: sc-2020 (dilution range: 1:2000-1:100,000) or Cruz Marker™ compatible donkey anti-goat IgG-HRP: sc-2033 (dilution range: 1:2000-1:5000), Cruz Marker™ Molecular Weight Standards: sc-2035, TBS Blotto A Blocking Reagent: sc-2333 and Western Blotting Luminol Reagent: sc-2048. 2) Immunofluorescence: use donkey anti-goat IgG-FITC: sc-2024 (dilution range: 1:100-1:400) or donkey anti-goat IgG-TR: sc-2783 (dilution range: 1:100-1:400) with UltraCruz™ Mounting Medium: sc-24941. 3) Immunohistochemistry: use ImmunoCruz™: sc-2053 or ABC: sc-2023 goat IgG Staining Systems.

DATA



LASS2 (E-15): sc-65102. Immunoperoxidase staining of formalin fixed, paraffin-embedded human lung tissue showing cytoplasmic and nuclear staining of pneumocytes.

STORAGE

Store at 4° C, ****DO NOT FREEZE****. Stable for one year from the date of shipment. Non-hazardous. No MSDS required.

PROTOCOLS

See our web site at www.scbt.com or our catalog for detailed protocols and support products.



Try **LASS2 (C-11): sc-390745** or **LASS2 (FT-7): sc-100553**, our highly recommended monoclonal alternatives to LASS2 (E-15).