

p41-ARCb (S-15): sc-65171

BACKGROUND

The Arp2/3 (actin-related protein 2/3) complex consists of seven subunits, all of which are Actin-related proteins. The complex is involved in the control of Actin polymerization and in mediating the formation of branched Actin networks. The p41 subunit of Arp2/3 exists in multiple versions which arise due to posttranslational modifications and vary in function depending on cell type or developmental stage. p41-ARCb, also known as ARPC1B (Actin-related protein 2/3 complex subunit 1B) or ARC41 (Arp2/3 complex 41 kDa subunit), is a 372 amino acid version of the p41 subunit of the Arp2/3 complex. Localized to the cytoplasm and cytoskeleton, p41-ARCb is involved in regulating the assembly and maintenance of the complex and, unlike the other Arp2/3 subunits, is not primarily involved in actin polymerization.

CHROMOSOMAL LOCATION

Genetic locus: ARPC1B (human) mapping to 7q22.1; Arpc1b (mouse) mapping to 5 G2.

SOURCE

p41-ARCb (S-15) is an affinity purified goat polyclonal antibody raised against a peptide mapping within an internal region of p41-ARCb of human origin.

PRODUCT

Each vial contains 200 µg IgG in 1.0 ml of PBS with < 0.1% sodium azide and 0.1% gelatin.

Blocking peptide available for competition studies, sc-65171 P, (100 µg peptide in 0.5 ml PBS containing < 0.1% sodium azide and 0.2% BSA).

STORAGE

Store at 4° C, ****DO NOT FREEZE****. Stable for one year from the date of shipment. Non-hazardous. No MSDS required.

APPLICATIONS

p41-ARCb (S-15) is recommended for detection of p41-ARCb of mouse, rat and human origin by Western Blotting (starting dilution 1:200, dilution range 1:100-1:1000), immunoprecipitation [1-2 µg per 100-500 µg of total protein (1 ml of cell lysate)], immunofluorescence (starting dilution 1:50, dilution range 1:50-1:500) and solid phase ELISA (starting dilution 1:30, dilution range 1:30-1:3000).

p41-ARCb (S-15) is also recommended for detection of p41-ARCb in additional species, including canine, bovine, porcine and avian.

Suitable for use as control antibody for p41-ARCb siRNA (h): sc-62745, p41-ARCb siRNA (m): sc-62746, p41-ARCb shRNA Plasmid (h): sc-62745-SH, p41-ARCb shRNA Plasmid (m): sc-62746-SH, p41-ARCb shRNA (h) Lentiviral Particles: sc-62745-V and p41-ARCb shRNA (m) Lentiviral Particles: sc-62746-V.

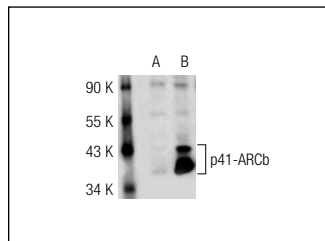
Molecular Weight of p41-ARCb: 41 kDa.

Positive Controls: p41-ARCb (m): 293T Lysate: sc-122324, PC-3 cell lysate: sc-2220 or SK-BR-3 cell lysate: sc-2218.

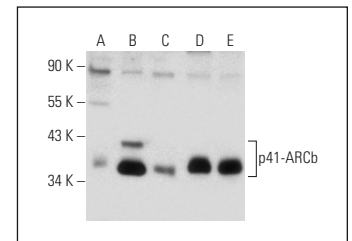
RECOMMENDED SECONDARY REAGENTS

To ensure optimal results, the following support (secondary) reagents are recommended: 1) Western Blotting: use donkey anti-goat IgG-HRP: sc-2020 (dilution range: 1:2000-1:100,000) or Cruz Marker™ compatible donkey anti-goat IgG-HRP: sc-2033 (dilution range: 1:2000-1:5000), Cruz Marker™ Molecular Weight Standards: sc-2035, TBS Blotto A Blocking Reagent: sc-2333 and Western Blotting Luminol Reagent: sc-2048. 2) Immunoprecipitation: use Protein A/G PLUS-Agarose: sc-2003 (0.5 ml agarose/2.0 ml). 3) Immunofluorescence: use donkey anti-goat IgG-FITC: sc-2024 (dilution range: 1:100-1:400) or donkey anti-goat IgG-TR: sc-2783 (dilution range: 1:100-1:400) with UltraCruz™ Mounting Medium: sc-24941.

DATA



p41-ARCb (S-15): sc-65171. Western blot analysis of p41-ARCb expression in non-transfected: sc-117752 (A) and mouse p41-ARCb transfected: sc-122324 (B) 293T whole cell lysates.



p41-ARCb (S-15): sc-65171. Western blot analysis of p41-ARCb expression in non-transfected 293T: sc-117752 (A), mouse p41-ARCb transfected 293T: sc-110361 (B), HeLa (C), PC-3 (D) and SK-BR-3 (E) whole cell lysates.

RESEARCH USE

For research use only, not for use in diagnostic procedures.

PROTOCOLS

See our web site at www.scbt.com or our catalog for detailed protocols and support products.

MONOS
Satisfaction
Guaranteed

Try **p41-ARCb (C-3): sc-137125** or **p41-ARCb (H-1): sc-271342**, our highly recommended monoclonal alternatives to p41-ARCb (S-15).