

CD1B (SN13/K5-1B8): sc-65246

BACKGROUND

The CD1 multigene family encodes five forms of the CD1 T-cell surface glycoprotein in human, designated CD1A, 1B, 1C, 1D and 1E. CD1, a type 1 membrane protein, has structural similarity to the MHC class I antigen and has been shown to present lipid antigens for recognition by T lymphocytes. CD1 antigens are associated with β -2-Microglobulin and expressed on cortical thymocytes, Langerhans cells, a B cell subset and some dendritic cells. Specifically, CD1A is a marker for Langerhans cell histiocytosis (LCH) and is found on interdigitating cells. Adaptor-protein complexes and CD1-associated chaperones control CD1 trafficking, and the development and activation of CD1-restricted T cells. Constitutive endocytosis of CD1B molecules and the differential sorting of MHC class II from lysosomes separate peptide and lipid antigen-presenting molecules during dendritic cell maturation. CD1B is also expressed in interdigitating cells. The human CD1 genes are all closely linked in a cluster mapping at chromosome 1q23.1.

REFERENCES

- Martin, L.H., Calabi, F., Lefebvre, F.A., Bilisland, C.A. and Milstein, C. 1987. Structure and expression of the human thymocyte antigens CD1A, CD1C, and CD1E. *Proc. Natl. Acad. Sci. USA* 84: 9189-9193.
- Aruffo, A. and Seed, B. 1989. Expression of cDNA clones encoding the thymocyte antigens CD1A, B, C demonstrates a hierarchy of exclusion in fibroblasts. *J. Immunol.* 143: 1723-1730.
- Longley, J., Kraus, J., Alonso, M. and Edelson, R. 1989. Molecular cloning of CD1A (T6), a human epidermal dendritic cell marker related to class I MHC molecules. *J. Invest. Dermatol.* 92: 628-631.
- Sotzik, F., Boyd, A. and Shortman, K. 1993. Surface antigens of human thymocyte populations defined by CD3, CD4 and CD8 expression: CD1A is expressed by mature thymocytes but not peripheral T cells. *Immunol. Lett.* 36: 101-106.
- Porcelli, S.A. 1995. The CD1 family: a third lineage of antigen-presenting molecules. *Adv. Immunol.* 59: 1-18.
- Melian, A., Beckman, E.M., Porcelli, S.A. and Brenner, M.B. 1996. Antigen presentation by CD1 and MHC-encoded class I-like molecules. *Curr. Opin. Immunol.* 8: 82-88.
- Storkus, W.J., Wei, M., Cresswell, P. and Dawson, J.R. 1996. Class I-like CD1A-C do not protect target cells from NK-mediated cytotoxicity. *Cell. Immunol.* 167: 154-156.
- Bauer, A., Huttinger, R., Staffler, G., Hansmann, C., Schmidt, W., Majdic, O., Knapp, W. and Stockinger, H. 1997. Analysis of the requirement for β -2-microglobulin for expression and formation of human CD1 antigens. *Eur. J. Immunol.* 27: 1366-1373.

CHROMOSOMAL LOCATION

Genetic locus: CD1B (human) mapping to 1q23.1.

SOURCE

CD1B (SN13/K5-1B8) is a mouse monoclonal antibody raised against membrane antigen preparation of thymocytes of human origin.

PRODUCT

Each vial contains 200 μ g IgG₁ kappa light chain in 1.0 ml of PBS with < 0.1% sodium azide and 0.1% gelatin.

CD1B (SN13/K5-1B8) is available conjugated to either phycoerythrin (sc-65246 PE) or fluorescein (sc-65246 FITC), 200 μ g/ml, for IF, IHC(P) and FCM.

APPLICATIONS

CD1B (SN13/K5-1B8) is recommended for detection of CD1B of human origin by immunoprecipitation [1-2 μ g per 100-500 μ g of total protein (1 ml of cell lysate)], immunofluorescence (starting dilution 1:50, dilution range 1:50-1:500) and flow cytometry (1 μ g per 1 x 10⁶ cells).

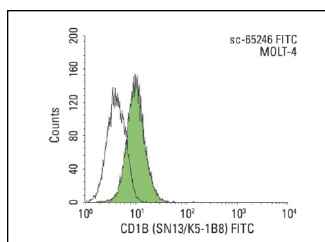
Suitable for use as control antibody for CD1B siRNA (h): sc-42745, CD1B shRNA Plasmid (h): sc-42745-SH and CD1B shRNA (h) Lentiviral Particles: sc-42745-V.

Molecular Weight of CD1B: 45 kDa.

RECOMMENDED SUPPORT REAGENTS

To ensure optimal results, the following support reagents are recommended: 1) Immunoprecipitation: use Protein A/G PLUS-Agarose: sc-2003 (0.5 ml agarose/2.0 ml). 2) Immunofluorescence: use m-IgG κ BP-FITC: sc-516140 or m-IgG κ BP-PE: sc-516141 (dilution range: 1:50-1:200) with UltraCruz[®] Mounting Medium: sc-24941 or UltraCruz[®] Hard-set Mounting Medium: sc-359850.

DATA



CD1B (SN13/K5-1B8) FITC: sc-65246 FITC. FCM analysis of MOLT-4 cells. Black line histogram represents the isotype control, normal mouse IgG₁: sc-2855.

STORAGE

Store at 4° C, ****DO NOT FREEZE****. Stable for one year from the date of shipment. Non-hazardous. No MSDS required.

RESEARCH USE

For research use only, not for use in diagnostic procedures.

PROTOCOLS

See our web site at www.scbt.com for detailed protocols and support products.