

# galectin-10 (B-F42): sc-65318

## BACKGROUND

Charcot-Leyden crystals are endogenous hexagonal bipyramidal crystals present in human tissues and secretions. Presence of Charcot-Leyden crystals correlates with the increased numbers of peripheral blood or tissue eosinophils that occurs with parasitic and allergic processes. Galectin-10, also referred to as Charcot-Leyden crystal (CLC) protein, singularly makes up these crystals. Galectin-10, a member of the galectin family of  $\beta$ -Galactoside binding proteins that bind to S-type animal lectins, is expressed solely in eosinophilic and basophilic leukocytes. Galectin-10 may possess carbohydrate or IgE-binding activities, and it plays a functional role in the biology of inflammation. Expression of galectin-10 is transcriptionally induced by butyric acid.

## REFERENCES

1. Gleich, G.J., et al. 1976. Comparative properties of the Charcot-Leyden crystal protein and the major basic protein from human eosinophils. *J. Clin. Invest.* 57: 633-640.
2. Weller, P.F., et al. 1982. Human eosinophil lysophospholipase: the sole protein component of Charcot-Leyden crystals. *J. Immunol.* 128: 1346-1349.
3. Calafat, J., et al. 1997. Ultrastructural localization of Charcot-Leyden crystal protein in human eosinophils and basophils. *Eur. J. Haematol.* 58: 56-66.
4. Dvorak, A.M., et al. 1997. Localization of Charcot-Leyden crystal protein in individual morphological phenotypes of human basophils stimulated by f-Met peptide. *Clin. Exp. Allergy* 27: 452-474.
5. Dyer, K.D., et al. 1997. The genomic structure of the human Charcot-Leyden crystal protein gene is analogous to those of the galectin genes. *Genomics* 40: 217-221.
6. Swaminathan, G.J., et al. 1999. Selective recognition of mannose by the human eosinophil Charcot-Leyden crystal protein (galectin-10): a crystallographic study at 1.8 Å resolution. *Biochemistry* 38: 13837-13843.
7. Dyer, K.D. and Rosenberg, H.F. 2001. Transcriptional regulation of galectin-10 (eosinophil Charcot-Leyden crystal protein): a GC box (-44 to -50) controls butyric acid induction of gene expression. *Life Sci.* 69: 201-212.
8. Ackerman, S.J., et al. 2002. Charcot-Leyden crystal protein (galectin-10) is not a dual function galectin with lysophospholipase activity but binds a lysophospholipase inhibitor in a novel structural fashion. *J. Biol. Chem.* 277: 14859-14868.
9. Dvorak, A.M. 2005. Immunogold ultrastructural techniques identify sub-cellular sites of chymase, Charcot-Leyden crystal protein, and histamine in basophils and mast cells. *Chem. Immunol. Allergy* 85: 89-97.

## STORAGE

Store at 4° C, \*\*DO NOT FREEZE\*\*. Stable for one year from the date of shipment. Non-hazardous. No MSDS required.

## PROTOCOLS

See our web site at [www.scbt.com](http://www.scbt.com) for detailed protocols and support products.

## CHROMOSOMAL LOCATION

Genetic locus: CLC (human) mapping to 19q13.2.

## SOURCE

galectin-10 (B-F42) is a mouse monoclonal antibody raised against recombinant galectin-10 of human origin.

## PRODUCT

Each vial contains 100  $\mu$ g IgG<sub>1</sub> in 1.0 ml of PBS with < 0.1% sodium azide, 0.1% gelatin and 1% stabilizer protein.

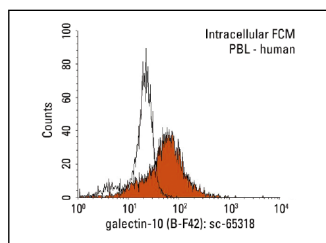
## APPLICATIONS

galectin-10 (B-F42) is recommended for detection of galectin-10 of human origin by immunofluorescence (starting dilution 1:50, dilution range 1:50-1:500) and flow cytometry (1  $\mu$ g per 1 x 10<sup>6</sup> cells).

Suitable for use as control antibody for galectin-10 siRNA (h): sc-72087, galectin-10 shRNA Plasmid (h): sc-72087-SH and galectin-10 shRNA (h) Lentiviral Particles: sc-72087-V.

Molecular Weight of galectin-10: 17 kDa.

## DATA



galectin-10 (B-F42): sc-65318. Indirect, intracellular FCM analysis of human peripheral blood leukocytes stained with galectin-10 (B-F42), followed by PE-conjugated goat anti-mouse IgG: sc-3738. Black line histogram represents the isotype control, normal mouse IgG<sub>1</sub>: sc-3877.

## RESEARCH USE

For research use only, not for use in diagnostic procedures.