

HSP 70/HSC 70 (SPM254): sc-65521

BACKGROUND

The HSP 70 family is composed of four highly conserved proteins: HSP 70, HSC 70, GRP 75 and GRP 78. These proteins serve a variety of roles: they act as molecular chaperones facilitating the assembly of multi-protein complexes, participate in the translocation of polypeptides across cell membranes and to the nucleus and aid in the proper folding of nascent polypeptide chains. All members of the family, except HSP 70, are constitutively expressed in primate cells. HSP 70 expression is strongly induced in response to heat stress. HSP 70 and HSC 70 play key roles in the cytosolic endoplasmic reticulum and mitochondrial import machinery and are found in both the cytosol and nucleus of mammalian cells. Both HSP 70 and HSC 70 are involved in the chaperoning of nascent polypeptide chains and in protecting cells against the accumulation of improperly folded proteins. GRP 78 is localized in the endoplasmic reticulum, where it receives imported secretory proteins and is involved in the folding and translocation of nascent peptide chains. GRP 75 expression is restricted to the mitochondrial matrix and aids in the translocation and folding of nascent polypeptide chains of both nuclear and mitochondrial origin. GRP 75 and GRP 78 are unresponsive to heat stress and are induced by glucose deprivation. It has been postulated that members of the HSP 70 family act as force-generating motors, relying on the hydrolysis of ATP for their activity.

CHROMOSOMAL LOCATION

Genetic locus: HSPA1A/HSPA1B (human) mapping to 6p21.33, HSPA8 (human) mapping to 11q24.1; Hspa1a (mouse) mapping to 17 B1, Hspa8 (mouse) mapping to 9 A5.1.

SOURCE

HSP 70/HSC 70 (SPM254) is a mouse monoclonal antibody raised against HSP 70 from HeLa cells.

PRODUCT

Each vial contains 200 µg IgG_{2a} lambda light chain in 1.0 ml of PBS with < 0.1% sodium azide and 0.1% gelatin.

STORAGE

Store at 4° C, ****DO NOT FREEZE****. Stable for one year from the date of shipment. Non-hazardous. No MSDS required.

APPLICATIONS

HSP 70/HSC 70 (SPM254) is recommended for detection of HSP 70 and HSC 70 of mouse, rat and human origin by Western Blotting (starting dilution 1:200, dilution range 1:100-1:1000), immunoprecipitation [1-2 µg per 100-500 µg of total protein (1 ml of cell lysate)], immunofluorescence (starting dilution 1:50, dilution range 1:50-1:500), immunohistochemistry (including paraffin-embedded sections) (starting dilution 1:50, dilution range 1:50-1:500) and flow cytometry (1 µg per 1 x 10⁶ cells).

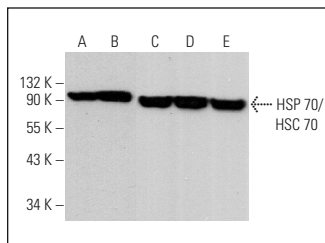
Molecular Weight of HSP 70/HSC 70: 70 kDa.

Positive Controls: HeLa whole cell lysate: sc-2200, HEK293 whole cell lysate: sc-45136 or A549 cell lysate: sc-2413.

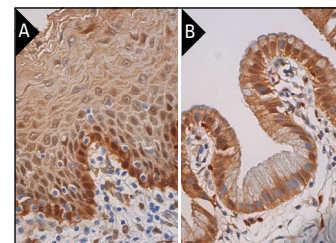
RECOMMENDED SUPPORT REAGENTS

To ensure optimal results, the following support reagents are recommended: 1) Western Blotting: use m-IgGλ BP-HRP: sc-516132 or m-IgGλ BP-HRP (Cruz Marker): sc-516132-CM (dilution range: 1:1000-1:10000), Cruz Marker™ Molecular Weight Standards: sc-2035, UltraCruz® Blocking Reagent: sc-516214 and Western Blotting Luminol Reagent: sc-2048. 2) Immunoprecipitation: use Protein A/G PLUS-Agarose: sc-2003 (0.5 ml agarose/2.0 ml). 3) Immunofluorescence: use m-IgGλ BP-FITC: sc-516185 or m-IgGλ BP-PE: sc-516186 (dilution range: 1:50-1:200) with UltraCruz® Mounting Medium: sc-24941 or UltraCruz® Hard-set Mounting Medium: sc-359850. 4) Immunohistochemistry: use m-IgGλ BP-HRP: sc-516132 with DAB, 50X: sc-24982 and Immunohistomount: sc-45086, or Organo/Limonene Mount: sc-45087.

DATA



HSP 70/HSC 70 (SPM254): sc-65521. Western blot analysis of HSP 70/HSC 70 expression in HeLa (A), DU 145 (B), HEK293 (C), A549 (D) and SW-13 (E) whole cell lysates. Detection reagent used: m-IgGλ BP-HRP (Cruz Marker): sc-516132-CM.



HSP 70/HSC 70 (SPM254): sc-65521. Immunoperoxidase staining of formalin fixed, paraffin-embedded human esophagus tissue showing cytoplasmic and nuclear staining of squamous epithelial cells (A). Immunoperoxidase staining of formalin fixed, paraffin-embedded human gall bladder tissue showing cytoplasmic and nuclear staining of glandular cells (B).

SELECT PRODUCT CITATIONS

- Xu, L., et al. 2010. Inhibition of host vacuolar H⁺-ATPase activity by a *Legionella pneumophila* effector. *PLoS Pathog.* 6: e1000822.
- Tseng, L.A. and Bixby, J.L. 2011. Interaction of an intracellular pentraxin with a BTB-Kelch protein is associated with ubiquitylation, aggregation and neuronal apoptosis. *Mol. Cell. Neurosci.* 47: 254-264.
- Wong, P.P., et al. 2014. Identification of MAGEA antigens as causal players in the development of tamoxifen-resistant breast cancer. *Oncogene* 33: 4579-4588.

RESEARCH USE

For research use only, not for use in diagnostic procedures.

PROTOCOLS

See our web site at www.scbt.com for detailed protocols and support products.



See **HSP 70/HSC 70 (W27): sc-24** for HSP 70/HSC 70 antibody conjugates, including AC, HRP, FITC, PE, Alexa Fluor® 488 and Alexa Fluor® 647.