

apoM (10C3G5): sc-65985

BACKGROUND

Apolipoproteins are protein components of plasma lipoproteins. ApoM, (apolipoprotein M) also known as protein G3a, is a member of the lipocalin family of proteins. ApoM is exclusively expressed in kidney tubular epithelial cells and liver hepatocytes. Mature apoM retains its signal peptide, which acts as a hydrophobic anchor and contains a structurally conserved eight stranded antiparallel β barrel, which binds retinol and retinoic acid. ApoM may play a key role in reverse cholesterol transport. It mainly associates with high density lipoprotein (HDL) and, to a lesser extent, with triglyceride-rich lipoprotein (TGRLP) and low-density lipoprotein (LDL). ApoM is important for the pre β -HDL formation. Pre β -HDL is an important acceptor of peripheral cellular cholesterol. The concentration of apoM in plasma strongly correlates with total cholesterol. Low concentrations of apoM in plasma is associated with diabetes.

REFERENCES

- Zhang, X.Y., Dong, X., Zheng, L., Luo, G.H., Liu, Y.H., Ekström, U., Nilsson-Ehle, P., Ye, Q. and Xu, N. 2003. Specific tissue expression and cellular localization of human apolipoprotein M as determined by *in situ* hybridization. *Acta Histochem.* 105: 67-72.
- Wolfrum, C., Poy, M.N. and Stoffel, M. 2005. Apolipoprotein M is required for pre β -HDL formation and cholesterol efflux to HDL and protects against atherosclerosis. *Nat. Med.* 11: 418-422.
- Christoffersen, C., Nielsen, L.B., Axler, O., Andersson, A., Johnsen, A.H. and Dahlbäck, B. 2006. Isolation and characterization of human apolipoprotein M-containing lipoproteins. *J. Lipid Res.* 47: 1833-1843.
- Dahlbäck, B. and Nielsen, L.B. 2006. Apolipoprotein M — a novel player in high-density lipoprotein metabolism and atherosclerosis. *Curr. Opin. Lipidol.* 17: 291-295.
- Christoffersen, C., Dahlbäck, B. and Nielsen, L.B. 2006. Apolipoprotein M: progress in understanding its regulation and metabolic functions. *Scand. J. Clin. Lab. Invest.* 66: 631-637.
- Xu, X., Ye, Q., Xu, N., He, X., Luo, G., Zhang, X., Zhu, J., Zhang, Y. and Nilsson-Ehle, P. 2006. Effects of ischemia-reperfusion injury on apolipoprotein M expression in the liver. *Transplant. Proc.* 38: 2769-2773.
- Ahnström, J., Faber, K., Axler, O. and Dahlbäck, B. 2007. Hydrophobic ligand binding properties of the human lipocalin apolipoprotein M. *J. Lipid Res.* 48: 1754-1762.
- Axler, O., Ahnström, J. and Dahlbäck, B. 2007. An ELISA for apolipoprotein M reveals a strong correlation to total cholesterol in human plasma. *J. Lipid Res.* 48: 1772-1780.
- Huang, X.S., Zhao, S.P., Hu, M. and Luo, Y.P. 2007. Apolipoprotein M likely extends its anti-atherogenesis via anti-inflammation. *Med. Hypotheses* 69: 136-140.

STORAGE

Store at 4° C, ****DO NOT FREEZE****. Stable for one year from the date of shipment. Non-hazardous. No MSDS required.

CHROMOSOMAL LOCATION

Genetic locus: APOM (human) mapping to 6p21.33.

SOURCE

apoM (10C3G5) is a mouse monoclonal antibody raised against purified full length recombinant apoM of human origin.

PRODUCT

Each vial contains 200 μ g IgG_{2b} in 1.0 ml PBS with < 0.1% sodium azide and 0.1% gelatin.

APPLICATIONS

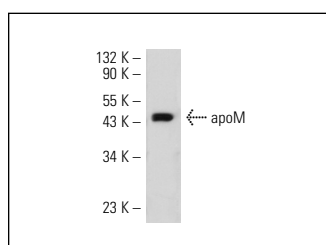
apoM (10C3G5) is recommended for detection of apoM of human origin by Western Blotting (starting dilution 1:200, dilution range 1:100-1:1000), immunoprecipitation [1-2 μ g per 100-500 μ g of total protein (1 ml of cell lysate)], immunofluorescence (starting dilution 1:50, dilution range 1:50-1:500) and solid phase ELISA (starting dilution 1:30, dilution range 1:30-1:3000).

Suitable for use as control antibody for apoM siRNA (h): sc-61978, apoM shRNA Plasmid (h): sc-61978-SH and apoM shRNA (h) Lentiviral Particles: sc-61978-V.

Molecular Weight of non-glycosylated apoM: 23 kDa.

Molecular Weight of glycosylated apoM: 25 kDa.

DATA



apoM (10C3G5): sc-65985. Western blot analysis of human recombinant apoM.

RESEARCH USE

For research use only, not for use in diagnostic procedures.

PROTOCOLS

See our web site at www.scbt.com or our catalog for detailed protocols and support products.