

CD8 (RIV11): sc-66203

BACKGROUND

The T cell receptor (TCR) is a heterodimer composed of either α and β or γ and δ chains. CD3 chains and the CD4 or CD8 co-receptors are also required for efficient signal transduction through the TCR. The TCR is expressed on T helper and T cytotoxic cells that can be distinguished by their expression of CD4 and CD8; T helper cells express CD4 proteins and T cytotoxic cells display CD8. CD8 (also designated Leu 2 or T8), a cell surface glycoprotein, is a two chain complex ($\alpha\alpha$ or $\alpha\beta$) receptor that binds class I MHC molecules presented by the antigen-presenting cell (APC). A primary function of CD8 is to facilitate antigen recognition by the TCR and to strengthen the avidity of the TCR-antigen interactions. An additional role for CD8-expressing T cells may be to maintain low levels of HIV expression.

REFERENCES

1. Nakayama, K., Tokito, S., Okumura, K. and Nakauchi, H. 1989. Structure and expression of the gene encoding CD8- α chain (Leu 2/T8). Immunogenetics 30: 393-397.
2. Allison, J.P. and Havran, W.L. 1991. The immunobiology of T cells with invariant γ δ antigen regions. Annu. Rev. Immunol. 9: 679-705.
3. Zuniga-Pflucker, J.C., Jones, L.A., Chin, L.T. and Kruisbeek, A.M. 1991. CD4 and CD8 act as co-receptors during thymic selection of the T cell repertoire. Sem. Immunol. 3: 167-175.
4. Fleury, S.G., Croteau, G. and Sekaly, R.P. 1991. CD4 and CD8 recognition of class II and class I molecules of the major histocompatibility complex. Sem. Immunol. 3: 177-185.
5. Janeway, C.A., Jr. 1992. The T cell receptor as a multicomponent signalling machine: CD4/CD8 coreceptors and CD45 in T cell activation. Annu. Rev. Immunol. 10: 645-674.
6. Julius, M., Maroun, C.R. and Haughn, L. 1993. Distinct roles for CD4 and CD8 as co-receptors in antigen receptor signalling. Immunol. Today 14: 177-183.
7. Buseyne, F. and Riviere, Y. 1993. HIV-specific CD8⁺ T cell immune responses and viral replication. AIDS Suppl. 2: S81-S85.
8. Ehrlich, E.W., Devaux, B., Rock, E.P., Jorgenson, J.L., Davis, M.N. and Chien, Y.H. 1993. T cell receptor interaction with peptide/major histocompatibility complex (MHC) and superantigen MHC ligands is dominated by antigen. J. Exp. Med. 178: 713-722.
9. Luescher, I.F., Vivier, E., Layer, A., Mahiou, J., Godeau, F., Malissen, B. and Romero, P. 1995. CD8 modulation of T cell antigen receptor-ligand interactions on living cytotoxic T lymphocytes. Nature 373: 353-356.

CHROMOSOMAL LOCATION

Genetic locus: CD8A (human) mapping to 2p11.2, CD8B1 (human) mapping to 2p11.2.

SOURCE

CD8 (RIV11) is a mouse monoclonal antibody raised against peripheral lymphocytes of human origin.

PRODUCT

Each vial contains 200 μ g IgG₁ in 1.0 ml of PBS with < 0.1% sodium azide and 0.1% gelatin.

Available as phycoerythrin (sc-66203 PE) or fluorescein (sc-66203 FITC) conjugates for flow cytometry, , 100 tests.

APPLICATIONS

CD8 (RIV11) is recommended for detection of CD8 of human origin by immunofluorescence (starting dilution 1:50, dilution range 1:50-1:500) and flow cytometry (1 μ g per 1 x 10⁶ cells).

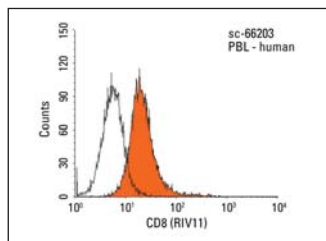
Molecular Weight of CD8- α : 39 kDa.

Molecular Weight of CD8- β : 32 kDa.

RECOMMENDED SECONDARY REAGENTS

To ensure optimal results, the following support (secondary) reagents are recommended: 1) Immunofluorescence: use goat anti-mouse IgG-FITC: sc-2010 (dilution range: 1:100-1:400) or goat anti-mouse IgG-TR: sc-2781 (dilution range: 1:100-1:400) with UltraCruz™ Mounting Medium: sc-24941.

DATA



CD8 (RIV11): sc-66203. Indirect FCM analysis of human peripheral blood leukocytes stained with CD8 (RIV11), followed by PE-conjugated goat anti-mouse IgG: sc-3738. Black line histogram represents the isotype control, normal mouse IgG₁: sc-3877.

STORAGE

Store at 4° C, ****DO NOT FREEZE****. Stable for one year from the date of shipment. Non-hazardous. No MSDS required.

RESEARCH USE

For research use only, not for use in diagnostic procedures.

PROTOCOLS

See our web site at www.scbt.com or our catalog for detailed protocols and support products.