

# TREX-1 (L-19): sc-66291

## BACKGROUND

TREX-1 (3' repair exonuclease-1), also known as trophoblast expressed 1, CRV, AGS1, AGS5, DRN3, HERNS or DNase III, is a member of the exonuclease superfamily and belongs to the TREX family. Members of the TREX family are involved in DNA metabolism and repair. TREX-1 is expressed in spleen, liver, thymus, colon, heart, brain and small intestine. It localizes to the nucleus and exists as a homodimer. TREX-1 is an exonuclease and its activity requires magnesium as a cofactor. TREX-1 has a preference for double stranded DNA and functions in the 3'-5' direction yielding nucleoside 5'-phosphates. TREX-1 also interacts with the SET complex (an endoplasmic reticulum (ER)-associated complex) and participates in granzyme A-mediated apoptosis. Mutations or defects in the gene encoding TREX-1 have been associated with a variety of diseases, including systemic lupus erythematosus, chilblain lupus (CHBL), Aicardi-Goutieres syndrome type 1 (AGS1) and type 5 (AGS5), and autosomal dominant retinal vasculopathy with cerebral leukodystrophy (CRV).

## REFERENCES

- Masuda, S., et al. 2005. Recruitment of the human TREX complex to mRNA during splicing. *Genes Dev.* 19: 1512-1517.
- Crow, Y.J., et al. 2006. Mutations in the gene encoding the 3'-5' DNA exonuclease TREX-1 cause Aicardi-Goutieres syndrome at the AGS1 locus. *Nat. Genet.* 38: 917-920.
- Chowdhury, D., et al. 2006. The exonuclease TREX-1 is in the SET complex and acts in concert with nm23-H1 to degrade DNA during granzyme A-mediated cell death. *Mol. Cell* 23: 133-142.
- Wang, J.Y. and Edelman, W. 2006. Mismatch repair proteins as sensors of alkylation DNA damage. *Cancer Cell* 9: 417-418.
- Namiki, Y. and Zou, L. 2006. ATRIP associates with replication protein A-coated ssDNA through multiple interactions. *Proc. Natl. Acad. Sci. USA* 103: 580-585.
- Coscoy, L. and Raulet, D.H. 2007. DNA mismanagement leads to immune system oversight. *Cell* 131: 836-838.
- Yang, Y.G., et al. 2007. TREX-1 exonuclease degrades ssDNA to prevent chronic checkpoint activation and autoimmune disease. *Cell* 131: 873-886.
- Lee-Kirsch, M.A., et al. 2007. Mutations in the gene encoding the 3'-5' DNA exonuclease TREX-1 are associated with systemic lupus erythematosus. *Nat. Genet.* 39: 1065-1067.
- Hur, J.W., et al. 2008. TREX-1 polymorphisms associated with autoantibodies in patients with systemic lupus erythematosus. *Rheumatol. Int.* 28: 783-789.

## CHROMOSOMAL LOCATION

Genetic locus: TREX1 (human) mapping to 3p21.31.

## SOURCE

TREX-1 (L-19) is an affinity purified goat polyclonal antibody raised against a peptide mapping near the C-terminus of TREX-1 of human origin.

## PRODUCT

Each vial contains 200 µg IgG in 1.0 ml of PBS with < 0.1% sodium azide and 0.1% gelatin. Also available as TransCruz reagent for Gel Supershift and ChIP applications, sc-66291 X, 200 µg/0.1 ml.

Blocking peptide available for competition studies, sc-66291 P, (100 µg peptide in 0.5 ml PBS containing < 0.1% sodium azide and 0.2% BSA).

## APPLICATIONS

TREX-1 (L-19) is recommended for detection of 3' repair exonuclease 1 of human origin by Western Blotting (starting dilution 1:200, dilution range 1:100-1:1000), immunoprecipitation [1-2 µg per 100-500 µg of total protein (1 ml of cell lysate)], immunofluorescence (starting dilution 1:50, dilution range 1:50-1:500) and solid phase ELISA (starting dilution 1:30, dilution range 1:30-1:3000).

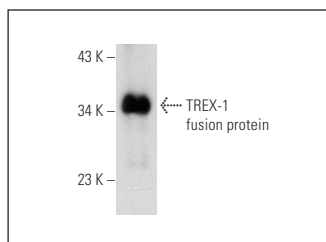
Suitable for use as control antibody for TREX-1 siRNA (h): sc-63157, TREX-1 shRNA Plasmid (h): sc-63157-SH and TREX-1 shRNA (h) Lentiviral Particles: sc-63157-V.

TREX-1 (L-19) X TransCruz antibody is recommended for Gel Supershift and ChIP applications.

Molecular Weight of TREX-1: 33 kDa.

Positive Controls: HeLa whole cell lysate: sc-2200.

## DATA



TREX-1 (L-19): sc-66291. Western blot analysis of mouse recombinant TREX-1 fusion protein.

## STORAGE

Store at 4° C, **\*\*DO NOT FREEZE\*\***. Stable for one year from the date of shipment. Non-hazardous. No MSDS required.

## RESEARCH USE

For research use only, not for use in diagnostic procedures.


 MONOS  
Satisfation  
Guaranteed

Try **TREX-1 (E-6): sc-271870**, our highly recommended monoclonal alternative to TREX-1 (L-19).