

Integrin $\beta 6$ (C-19): sc-6632

BACKGROUND

Integrins are heterodimers composed of noncovalently associated transmembrane α and β subunits. The 16 α and 8 β subunits heterodimerize to produce more than 20 different receptors. Most integrin receptors bind ligands that are components of the extracellular matrix, including Fibronectin, collagen and Vitronectin. Certain integrins can also bind to soluble ligands such as Fibrinogen, or to counterreceptors on adjacent cells such as the intracellular adhesion molecules (ICAMs), leading to aggregation of cells. Ligands serve to cross-link or cluster integrins by binding to adjacent integrin receptors; both receptor clustering and ligand occupancy are necessary for the activation of integrin-mediated responses. In addition to mediating cell adhesion and cytoskeletal organization, integrins function as signaling receptors. Signals transduced by integrins play a role in many biological processes, including cell growth, differentiation, migration and apoptosis.

CHROMOSOMAL LOCATION

Genetic locus: ITGB6 (human) mapping to 2q24.2; Itgb6 (mouse) mapping to 2 C1.2.

SOURCE

Integrin $\beta 6$ (C-19) is an affinity purified goat polyclonal antibody raised against a peptide mapping at the C-terminus of Integrin $\beta 6$ of human origin.

PRODUCT

Each vial contains 200 μ g IgG in 1.0 ml of PBS with < 0.1% sodium azide and 0.1% gelatin.

Blocking peptide available for competition studies, sc-6632 P, (100 μ g peptide in 0.5 ml PBS containing < 0.1% sodium azide and 0.2% BSA).

STORAGE

Store at 4° C, ****DO NOT FREEZE****. Stable for one year from the date of shipment. Non-hazardous. No MSDS required.

APPLICATIONS

Integrin $\beta 6$ (C-19) is recommended for detection of Integrin $\beta 6$ of mouse, rat and human origin by Western Blotting (starting dilution 1:200, dilution range 1:100-1:1000), immunofluorescence (starting dilution 1:50, dilution range 1:50-1:500), immunohistochemistry (including paraffin-embedded sections) (starting dilution 1:50, dilution range 1:50-1:500) and solid phase ELISA (starting dilution 1:30, dilution range 1:30-1:3000).

Integrin $\beta 6$ (C-19) is also recommended for detection of Integrin $\beta 6$ in additional species, including canine, bovine and porcine.

Suitable for use as control antibody for Integrin $\beta 6$ siRNA (h): sc-43135, Integrin $\beta 6$ siRNA (m): sc-43136, Integrin $\beta 6$ shRNA Plasmid (h): sc-43135-SH, Integrin $\beta 6$ shRNA Plasmid (m): sc-43136-SH, Integrin $\beta 6$ shRNA (h) Lentiviral Particles: sc-43135-V and Integrin $\beta 6$ shRNA (m) Lentiviral Particles: sc-43136-V.

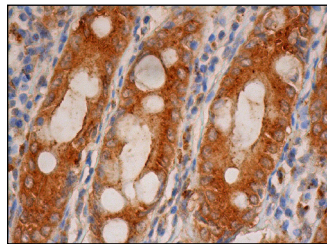
Molecular Weight of Integrin $\beta 6$: 97 kDa.

Positive Controls: rat lung extract: sc-2396.

RECOMMENDED SECONDARY REAGENTS

To ensure optimal results, the following support (secondary) reagents are recommended: 1) Western Blotting: use donkey anti-goat IgG-HRP: sc-2020 (dilution range: 1:2000-1:100,000) or Cruz Marker™ compatible donkey anti-goat IgG-HRP: sc-2033 (dilution range: 1:2000-1:5000), Cruz Marker™ Molecular Weight Standards: sc-2035, TBS Blotto A Blocking Reagent: sc-2333 and Western Blotting Luminol Reagent: sc-2048. 2) Immunofluorescence: use donkey anti-goat IgG-FITC: sc-2024 (dilution range: 1:100-1:400) or donkey anti-goat IgG-TR: sc-2783 (dilution range: 1:100-1:400) with UltraCruz™ Mounting Medium: sc-24941. 3) Immunohistochemistry: use ImmunoCruz™: sc-2053 or ABC: sc-2023 goat IgG Staining Systems.

DATA



Integrin $\beta 6$ (C-19): sc-6632. Immunoperoxidase staining of formalin fixed, paraffin-embedded human rectum tissue showing cytoplasmic staining of glandular cells.

SELECT PRODUCT CITATIONS

- Dulabon, L., et al. 2000. Reelin binds $\alpha 3 \beta 1$ Integrin and inhibits neuronal migration. *Neuron* 27: 33-44.
- Kracklauer, M.P., et al. 2003. TGF β 1 signaling via $\alpha \nu \beta 6$ Integrin. *Mol. Cancer* 2: 28.
- Luetlich, K., et al. 2003. TGF β 1 activates c-Jun and Erk1 via $\alpha \nu \beta 6$ Integrin. *Mol. Cancer* 2: 33.
- Marsh, D., et al. 2008. $\alpha \nu \beta 6$ Integrin promotes the invasion of morphoeic basal cell carcinoma through stromal modulation. *Cancer Res.* 68: 3295-3303.
- Liu, T., et al. 2012. Staphylococcal enterotoxin B compromises the immune tolerant status in the airway mucosa. *Clin. Exp. Allergy* 42: 375-382.
- Richard, V., et al. 2013. Multiple drug resistant, tumorigenic stem-like cells in oral cancer. *Cancer Lett.* 338: 300-316.

RESEARCH USE

For research use only, not for use in diagnostic procedures.



Try **Integrin $\beta 6$ (4C3): sc-293194**, our highly recommended monoclonal alternative to Integrin $\beta 6$ (C-19).