

# Neurexophilin-3 (C-15) : sc-66481

## BACKGROUND

Neurexophilin-1 (also known as NPH1 or NXPH1), Neurexophilin-2 (also known as NPH2 or NXPH2) and Neurexophilin-3 (also known as NPH3 or NXPH3) are members of the Neurexophilin family (Neurexophilin-1-4) of neuropeptide-like glycoproteins that are proteolytically processed after synthesis. Neurexophilin-1-3 are secreted proteins that are thought to function as signaling molecules which specifically bind to target proteins, such as neuexin  $\alpha$  (a protein that promotes adhesion between dendrites and axons), and are essential for proper neurotransmitter release. While Neurexophilin-1 is located primarily in spleen tissue, Neurexophilin-2 is expressed primarily in kidney and both Neurexophilin-2 and Neurexophilin-3 are highly expressed in brain. Defects in the gene encoding Neurexophilin-1 may be associated with schizophrenia, a mental disorder characterized by an abnormal perception of reality.

## CHROMOSOMAL LOCATION

Genetic locus: NXPH3 (human) mapping to 17q21.33; Nxph3 (mouse) mapping to 11 D.

## SOURCE

Neurexophilin-3 (C-15) is an affinity purified goat polyclonal antibody raised against a peptide mapping near the C-terminus of Neurexophilin-3 of human origin.

## PRODUCT

Each vial contains 200  $\mu$ g IgG in 1.0 ml of PBS with < 0.1% sodium azide and 0.1% gelatin.

Blocking peptide available for competition studies, sc-66481 P, (100  $\mu$ g peptide in 0.5 ml PBS containing < 0.1% sodium azide and 0.2% BSA).

## RESEARCH USE

For research use only, not for use in diagnostic procedures.

## APPLICATIONS

Neurexophilin-3 (C-15) is recommended for detection of Neurexophilin-3 of mouse, rat and human origin by Western Blotting (starting dilution 1:200, dilution range 1:100-1:1000), immunoprecipitation [1-2  $\mu$ g per 100-500  $\mu$ g of total protein (1 ml of cell lysate)], immunofluorescence (starting dilution 1:50, dilution range 1:50-1:500) and solid phase ELISA (starting dilution 1:30, dilution range 1:30-1:3000).

Neurexophilin-3 (C-15) is also recommended for detection of Neurexophilin-3 in additional species, including equine, canine, bovine and porcine.

Suitable for use as control antibody for Neurexophilin-3 siRNA (h): sc-62679, Neurexophilin-3 siRNA (m): sc-62680, Neurexophilin-3 shRNA Plasmid (h): sc-62679-SH, Neurexophilin-3 shRNA Plasmid (m): sc-62680-SH, Neurexophilin-3 shRNA (h) Lentiviral Particles: sc-62679-V and Neurexophilin-3 shRNA (m) Lentiviral Particles: sc-62680-V.

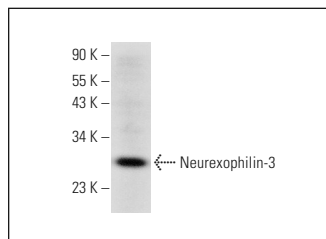
Molecular Weight of Neurexophilin-3: 28 kDa.

Positive Controls: A549 cell lysate: sc-2413.

## RECOMMENDED SECONDARY REAGENTS

To ensure optimal results, the following support (secondary) reagents are recommended: 1) Western Blotting: use donkey anti-goat IgG-HRP: sc-2020 (dilution range: 1:2000-1:100,000) or Cruz Marker™ compatible donkey anti-goat IgG-HRP: sc-2033 (dilution range: 1:2000-1:5000), Cruz Marker™ Molecular Weight Standards: sc-2035, TBS Blotto A Blocking Reagent: sc-2333 and Western Blotting Luminol Reagent: sc-2048. 2) Immunoprecipitation: use Protein A/G PLUS-Agarose: sc-2003 (0.5 ml agarose/2.0 ml). 3) Immunofluorescence: use donkey anti-goat IgG-FITC: sc-2024 (dilution range: 1:100-1:400) or donkey anti-goat IgG-TR: sc-2783 (dilution range: 1:100-1:400) with UltraCruz™ Mounting Medium: sc-24941.

## DATA



Neurexophilin-3 (C-15): sc-66481. Western blot analysis of Neurexophilin-3 expression in A549 whole cell lysate.

## STORAGE

Store at 4° C, **\*\*DO NOT FREEZE\*\***. Stable for one year from the date of shipment. Non-hazardous. No MSDS required.

## PROTOCOLS

See our web site at [www.scbt.com](http://www.scbt.com) or our catalog for detailed protocols and support products.

**MONOS**  
Satisfaction  
Guaranteed

Try **Neurexophilin-3 (B-11): sc-393156**, our highly recommended monoclonal alternative to Neurexophilin-3 (C-15).