

gremlin-2 (E-12): sc-66534

BACKGROUND

The gremlin protein family contains antagonists of bone morphogenetic protein (BMP) signaling that are expressed in the neural crest. All family members are secreted proteins that act as BMP antagonists in embryonic explants and are expressed in the proximal airway epithelium of the lung during embryonic development. Gremlin-1 is required for early limb outgrowth and patterning in the FGF4-Shh feedback loop, while gremlin-2 binds and blocks the activity of BMP-2 and BMP-4. The dorsaling factor gremlin belongs to a novel gene family that includes the head-inducing factor cerberus and the tumor suppressor DAN. Additionally, secreted gremlin relays the Sonic hedgehog signal from the polarizing region to the apical ectodermal ridge.

REFERENCES

- Hsu, D.R., Economides, A.N., Wang, X., Eimon, P.M. and Harland, R.M. 1998. The *Xenopus* dorsaling factor gremlin identifies a novel family of secreted proteins that antagonize BMP activities. *Mol. Cell* 1: 673-683.
- Zuniga, A., Haramis, A.P., McMahon, A.P. and Zeller, R. 1999. Signal relay by BMP antagonism controls the Shh/FGF4 feedback loop in vertebrate limb buds. *Nature* 401: 598-602.
- Topol, L.Z., Modi, W.S., Koochekpour, S. and Blair, D.G. 2000. DRM/gremlin (CKTSF1B1) maps to human chromosome 15 and is highly expressed in adult and fetal brain. *Cytogenet. Cell Genet.* 89: 79-84.
- Ohtori, S., Hanaoka, E., Shinbo, J., Moriya, H., Yamamoto, T., Ino, H., Chiba, T., Hanaoka, E., Shinbo, J., Isogai, E. and Sakiyama, S. 2001. A novel neurotransmitter, DAN, mediates pain sensation in the spinal dorsal horn. *Nippon Rinsho* 59: 1698-1703.
- Shi, W., Zhao, J., Anderson, K.D. and Warburton, D. 2001. Gremlin negatively modulates BMP-4 induction of embryonic mouse lung branching morphogenesis. *Am. J. Physiol. Lung Cell. Mol. Physiol.* 280: 1030-1039.
- Lu, M.M., Yang, H., Zhang, L., Shu, W., Blair, D.G. and Morrisey, E.E. 2001. The bone morphogenetic protein antagonist gremlin regulates proximal-distal patterning of the lung. *Dev. Dyn.* 222: 667-680.

CHROMOSOMAL LOCATION

Genetic locus: GREM2 (human) mapping to 1q43; Grem2 (mouse) mapping to 1 H3.

SOURCE

gremlin-2 (E-12) is an affinity purified goat polyclonal antibody raised against a peptide mapping near the C-terminus of gremlin-2 of human origin.

STORAGE

Store at 4° C, ****DO NOT FREEZE****. Stable for one year from the date of shipment. Non-hazardous. No MSDS required.

PROTOCOLS

See our web site at www.scbt.com or our catalog for detailed protocols and support products.

PRODUCT

Each vial contains 200 µg IgG in 1.0 ml of PBS with < 0.1% sodium azide and 0.1% gelatin.

Blocking peptide available for competition studies, sc-66534 P, (100 µg peptide in 0.5 ml PBS containing < 0.1% sodium azide and 0.2% BSA).

APPLICATIONS

gremlin-2 (E-12) is recommended for detection of gremlin-2 of mouse, rat and human origin by Western Blotting (starting dilution 1:200, dilution range 1:100-1:1000), immunofluorescence (starting dilution 1:50, dilution range 1:50-1:500), immunohistochemistry (including paraffin-embedded sections) (starting dilution 1:50, dilution range 1:50-1:500) and solid phase ELISA (starting dilution 1:30, dilution range 1:30-1:3000).

gremlin-2 (E-12) is also recommended for detection of gremlin-2 in additional species, including equine and canine.

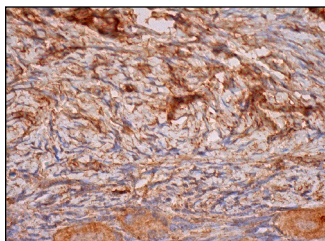
Suitable for use as control antibody for gremlin-2 siRNA (h): sc-62425, gremlin-2 siRNA (m): sc-62426, gremlin-2 shRNA Plasmid (h): sc-62425-SH, gremlin-2 shRNA Plasmid (m): sc-62426-SH, gremlin-2 shRNA (h) Lentiviral Particles: sc-62425-V and gremlin-2 shRNA (m) Lentiviral Particles: sc-62426-V.

Molecular Weight of gremlin-2: 19 kDa.

RECOMMENDED SECONDARY REAGENTS

To ensure optimal results, the following support (secondary) reagents are recommended: 1) Western Blotting: use donkey anti-goat IgG-HRP: sc-2020 (dilution range: 1:2000-1:100,000) or Cruz Marker™ compatible donkey anti-goat IgG-HRP: sc-2033 (dilution range: 1:2000-1:5000), Cruz Marker™ Molecular Weight Standards: sc-2035, TBS Blocker A Blocking Reagent: sc-2333 and Western Blotting Luminol Reagent: sc-2048. 2) Immunofluorescence: use donkey anti-goat IgG-FITC: sc-2024 (dilution range: 1:100-1:400) or donkey anti-goat IgG-TR: sc-2783 (dilution range: 1:100-1:400) with UltraCruz™ Mounting Medium: sc-24941. 3) Immunohistochemistry: use ImmunoCruz™: sc-2053 or ABC: sc-2023 goat IgG Staining Systems.

DATA



gremlin-2 (E-12): sc-66534. Immunoperoxidase staining of formalin fixed, paraffin-embedded human ovary tissue showing cytoplasmic staining of follicle cells and ovarian stroma cells and extracellular staining of connective tissue.

RESEARCH USE

For research use only, not for use in diagnostic procedures.