

Coronin 1B (M-80): sc-66839

BACKGROUND

Coronins are a family of WD repeat-containing, actin-binding proteins that localize to submembrane areas and regulate cell motility and cytoskeletal rearrangement. Coronin 1A (CORO1A, CLIPINA, CLABP, TACO, p57) can form coiled coil-mediated homotrimeric complexes that influence early phagosome formation. PKC-dependent phosphorylation of Coronin 1B (CORO1B) at Serine 2 regulates leading edge dynamics and cell motility in fibroblasts through interactions with Arp2/3 complex. Coronin 1C (CORO1C, Coronin 3, HCRNN4) is abundant in differentiating Neuro-2a cells, PC-12 cells and primary oligodendrocytes, where it is thought to influence neuron morphogenesis and migration. Coronin 2A (CORO2A, CLIPINB, IR10, WDR2) is a component of the approximately 1.5-2 megadalton N-CoR (nuclear receptor corepressor) complex of 10-12 proteins, which recruits HDACs to generate repressive chromatin. Coronin 7 (CORO7, CRN7) localizes to the Golgi membrane and influences the organization of intracellular membrane compartments and vesicular trafficking. Coronin 2B (CORO2B, CLIPINC) and Coronin 6 (CORO6) are similar to other members of this family, since they possess a conserved basic N-terminal motif and 3-10 WD repeats clustered in one to two core domains.

REFERENCES

- Mishima, M., et al. 1999. Coronin localizes to leading edges and is involved in cell spreading and lamellipodium extension in vertebrate cells. *J. Cell Sci.* 112: 2833-2842.
- Spoerl, Z., et al. 2002. Oligomerization, F-Actin interaction, and membrane association of the ubiquitous mammalian Coronin 3 are mediated by its carboxyl-terminus. *J. Biol. Chem.* 277: 48858-48867.
- Yoon, H.G., et al. 2003. Purification and functional characterization of the human N-CoR complex: the roles of HDAC3, TBL1 and TBLR1. *EMBO J.* 22: 1336-1346.
- Rybakin, V., et al. 2004. Coronin 7, the mammalian POD-1 homologue, localizes to the Golgi apparatus. *FEBS Lett.* 573: 161-167.
- Hasse, A., et al. 2005. Coronin 3 and its role in murine brain morphogenesis. *Eur. J. Neurosci.* 21: 1155-1168.

CHROMOSOMAL LOCATION

Genetic locus: CORO1B (human) mapping to 11q13.1; Coro1b (mouse) mapping to 19 A.

SOURCE

Coronin 1B (M-80) is a rabbit polyclonal antibody raised against amino acids 405-484 mapping at the C-terminus of Coronin 1B of mouse origin.

PRODUCT

Each vial contains 200 µg IgG in 1.0 ml of PBS with < 0.1% sodium azide and 0.1% gelatin.

STORAGE

Store at 4° C, ****DO NOT FREEZE****. Stable for one year from the date of shipment. Non-hazardous. No MSDS required.

APPLICATIONS

Coronin 1B (M-80) is recommended for detection of Coronin 1B of mouse, rat and, to a lesser extent, human origin by Western Blotting (starting dilution 1:200, dilution range 1:100-1:1000), immunoprecipitation [1-2 µg per 100-500 µg of total protein (1 ml of cell lysate)], immunofluorescence (starting dilution 1:50, dilution range 1:50-1:500) and solid phase ELISA (starting dilution 1:30, dilution range 1:30-1:3000).

Suitable for use as control antibody for Coronin 1B siRNA (h): sc-44695, Coronin 1B siRNA (m): sc-44696, Coronin 1B shRNA Plasmid (h): sc-44695-SH, Coronin 1B shRNA Plasmid (m): sc-44696-SH, Coronin 1B shRNA (h) Lentiviral Particles: sc-44695-V and Coronin 1B shRNA (m) Lentiviral Particles: sc-44696-V.

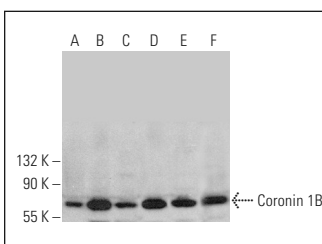
Molecular Weight of Coronin 1B: 57 kDa.

Positive Controls: mouse brain extract: sc-2253, mouse testis extract: sc-2405 or mouse liver extract: sc-2256.

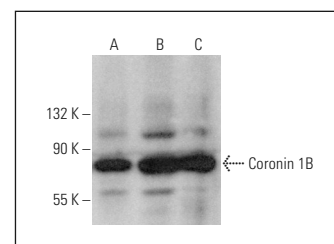
RECOMMENDED SECONDARY REAGENTS

To ensure optimal results, the following support (secondary) reagents are recommended: 1) Western Blotting: use goat anti-rabbit IgG-HRP: sc-2004 (dilution range: 1:2000-1:100,000) or Cruz Marker™ compatible goat anti-rabbit IgG-HRP: sc-2030 (dilution range: 1:2000-1:5000), Cruz Marker™ Molecular Weight Standards: sc-2035, TBS Blotto A Blocking Reagent: sc-2333 and Western Blotting Luminol Reagent: sc-2048. 2) Immunoprecipitation: use Protein A/G PLUS-Agarose: sc-2003 (0.5 ml agarose/2.0 ml). 3) Immunofluorescence: use goat anti-rabbit IgG-FITC: sc-2012 (dilution range: 1:100-1:400) or goat anti-rabbit IgG-TR: sc-2780 (dilution range: 1:100-1:400) with UltraCruz™ Mounting Medium: sc-24941.

DATA



Coronin 1B (M-80): sc-66839. Western blot analysis of Coronin 1B expression in Neuro-2A (A), EOC 20 (B), NIH/3T3 (C), C3H/10T/1/2 (D), WEHI-231 (E) and PC-12 (F) whole cell lysates.



Coronin 1B (M-80): sc-66839. Western blot analysis of Coronin 1B expression in mouse brain (A), mouse testis (B) and mouse liver (C) tissue extracts.

RESEARCH USE

For research use only, not for use in diagnostic procedures.



Try **Coronin 1B (G-8): sc-271445** or **Coronin 1B (E-3): sc-271375**, our highly recommended monoclonal alternatives to Coronin 1B (M-80).