

cystatin A (H-48): sc-66852

BACKGROUND

Cystatin A (also designated STF1, STFA, stefin A or cystatin AS) and cystatin B (also designated PME, CST6, STFB, CPI-B, stefin B and liver thiol proteinase inhibitor) are thiol protease inhibitors that form complexes with papain and the cathepsins B, H, and L. Cystatin A, a cytoplasmic protein, is one of the precursor proteins of the cornified cell envelope in keratinocytes and plays a role in epidermal development and maintenance. Cystatin B protects against intracellular proteases leaking out of lysosomes and is primarily expressed in heart, liver and kidney.

REFERENCES

- Ritonja, A., et al. 1985. Amino acid sequence of the intracellular cysteine proteinase inhibitor cystatin B from human liver. *Biochem. Biophys. Res. Commun.* 131: 1187-1192.
- Jerala, R., et al. 1988. Cloning a synthetic gene for human stefin B and its expression in *E. coli*. *FEBS Lett.* 239: 41-44.
- Pennacchio, L.A., et al. 1996. Mutations in the gene encoding cystatin B in progressive myoclonus epilepsy (EPM1). *Science* 271: 1731-1734.
- Kos, J., et al. 1998. Cysteine proteinases and their endogenous inhibitors: target proteins for prognosis, diagnosis and therapy in cancer (review). *Oncol. Rep.* 5: 1349-1361.
- Takahashi, H., et al. 1998. Structure and transcriptional regulation of the human cystatin A gene. The 12-O-tetradecanoylphorbol-13-acetate (TPA) responsive element-2 site (-272 to -278) on cystatin A gene is critical for TPA-dependent regulation. *J. Biol. Chem.* 273: 17375-17380.
- Takahashi, H., et al. 2001. Expression of human cystatin A by keratinocytes is positively regulated via the Ras/MEK1/MKK7/JNK signal transduction pathway but negatively regulated via the Ras/Raf-1/MEK1/ERK pathway. *J. Biol. Chem.* 276: 36632-36638.
- Jenko, S., et al. 2004. Different propensity to form amyloid fibrils by two homologous proteins-Human stefins A and B: searching for an explanation. *Proteins* 55: 417-425.

CHROMOSOMAL LOCATION

Genetic locus: CSTA (human) mapping to 3q21.1.

SOURCE

cystatin A (H-48) is a rabbit polyclonal antibody raised against amino acids 51-98 mapping at the C-terminus of cystatin A of human origin.

PRODUCT

Each vial contains 200 µg IgG in 1.0 ml of PBS with < 0.1% sodium azide and 0.1% gelatin.

STORAGE

Store at 4° C, ****DO NOT FREEZE****. Stable for one year from the date of shipment. Non-hazardous. No MSDS required.

APPLICATIONS

cystatin A (H-48) is recommended for detection of cystatin A of human origin by Western Blotting (starting dilution 1:200, dilution range 1:100-1:1000), immunoprecipitation [1-2 µg per 100-500 µg of total protein (1 ml of cell lysate)], immunofluorescence (starting dilution 1:50, dilution range 1:50-1:500), immunohistochemistry (including paraffin-embedded sections) (starting dilution 1:50, dilution range 1:50-1:500) and solid phase ELISA (starting dilution 1:30, dilution range 1:30-1:3000).

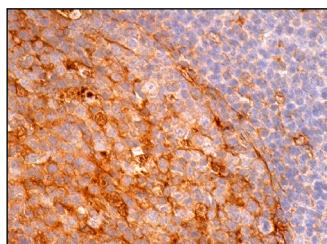
Suitable for use as control antibody for cystatin A siRNA (h): sc-44430, cystatin A shRNA Plasmid (h): sc-44430-SH and cystatin A shRNA (h) Lentiviral Particles: sc-44430-V.

Molecular Weight of cystatin A: 11 kDa.

RECOMMENDED SECONDARY REAGENTS

To ensure optimal results, the following support (secondary) reagents are recommended: 1) Western Blotting: use goat anti-rabbit IgG-HRP: sc-2004 (dilution range: 1:2000-1:100,000) or Cruz Marker™ compatible goat anti-rabbit IgG-HRP: sc-2030 (dilution range: 1:2000-1:5000), Cruz Marker™ Molecular Weight Standards: sc-2035, TBS Blotto A Blocking Reagent: sc-2333 and Western Blotting Luminol Reagent: sc-2048. 2) Immunoprecipitation: use Protein A/G PLUS-Agarose: sc-2003 (0.5 ml agarose/2.0 ml). 3) Immunofluorescence: use goat anti-rabbit IgG-FITC: sc-2012 (dilution range: 1:100-1:400) or goat anti-rabbit IgG-TR: sc-2780 (dilution range: 1:100-1:400) with UltraCruz™ Mounting Medium: sc-24941. 4) Immunohistochemistry: use ImmunoCruz™: sc-2051 or ABC: sc-2018 rabbit IgG Staining Systems.

DATA



cystatin A (H-48): sc-66852. Immunoperoxidase staining of formalin fixed, paraffin-embedded human tonsil tissue showing cytoplasmic staining of cells in germinal centers.

RESEARCH USE

For research use only, not for use in diagnostic procedures.

MONOS
Satisfaction
Guaranteed

Try **cystatin A (B-11): sc-376759** or **cystatin A (WR23/2/3): sc-32803**, our highly recommended monoclonal alternatives to cystatin A (H-48).