

Fcrls (M-60): sc-66889

BACKGROUND

The Fc receptor homolog (FcRH) family of proteins are related to the classical Fc receptors (FcR) and belong to the immunoglobulin receptor superfamily. The proteins in the FcRH family (namely FcRH1-FcRH6) are type I transmembrane glycoproteins that are involved in immune system regulation and have immunoreceptor-tyrosine inhibitory motifs in their cytoplasmic domains. FcRH proteins are expressed primarily, although not exclusively, by mature B lineage cells, and may also serve important regulatory roles in normal and neoplastic B cell development. Fcrls (Fc receptor-like S), also known as IgSR, Msr2, Fcrh2, IFGP2, MMAN-g, FcRH2sc or moFcRH2sc, is a 509 amino acid mouse protein that is related to the human FcRH family. The mouse ortholog of human FcRH2, Fcrls is expressed in non-lymphoid tissues and may play a role in developmental regulation events throughout the cell.

REFERENCES

1. Davis, R.S., et al. 2001. Identification of a family of Fc receptor homologs with preferential B cell expression. *Proc. Natl. Acad. Sci. USA* 98: 9772-9777.
2. Davis, R.S., et al. 2002. Fc receptor homologs (FcRH1-5) extend the Fc receptor family. *Curr. Top. Microbiol. Immunol.* 266: 85-112.
3. Davis, R.S., et al. 2002. Fc receptor homologs: newest members of a remarkably diverse Fc receptor gene family. *Immunol. Rev.* 190: 123-136.
4. Ehrhardt, G.R., et al. 2003. The inhibitory potential of Fc receptor homolog 4 on memory B cells. *Proc. Natl. Acad. Sci. USA* 100: 13489-13494.
5. Davis, R.S., et al. 2004. Differential B cell expression of mouse Fc receptor homologs. *Int. Immunol.* 16: 1343-1353.
6. Davis, R.S., et al. 2005. An extended family of Fc receptor relatives. *Eur. J. Immunol.* 35: 674-680.
7. Wilson, T.J., et al. 2007. Fcrl6, a new ITIM-bearing receptor on cytolytic cells, is broadly expressed by lymphocytes following HIV-1 infection. *Blood* 109: 3786-3793.
8. Taylor, A.I., et al. 2007. The first avian Ig-like Fc receptor family member combines features of mammalian FcR and Fcrl. *Immunogenetics* 59: 323-328.

CHROMOSOMAL LOCATION

Genetic locus: Fcrls (mouse) mapping to 3 F1.

SOURCE

Fcrls (M-60) is a rabbit polyclonal antibody raised against amino acids 111-170 mapping near the N-terminus of Fcrls of mouse origin.

RESEARCH USE

For research use only, not for use in diagnostic procedures.

PRODUCT

Each vial contains 200 µg IgG in 1.0 ml of PBS with < 0.1% sodium azide and 0.1% gelatin.

APPLICATIONS

Fcrls (M-60) is recommended for detection of Fcrls of mouse and rat origin by Western Blotting (starting dilution 1:200, dilution range 1:100-1:1000), immunoprecipitation [1-2 µg per 100-500 µg of total protein (1 ml of cell lysate)], immunofluorescence (starting dilution 1:50, dilution range 1:50-1:500) and solid phase ELISA (starting dilution 1:30, dilution range 1:30-1:3000).

Suitable for use as control antibody for Fcrls siRNA (m): sc-45687.

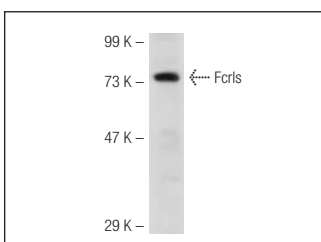
Molecular Weight of Fcrls: 64 kDa.

Positive Controls: IB4 whole cell lysate.

RECOMMENDED SECONDARY REAGENTS

To ensure optimal results, the following support (secondary) reagents are recommended: 1) Western Blotting: use goat anti-rabbit IgG-HRP: sc-2004 (dilution range: 1:2000-1:100,000) or Cruz Marker™ compatible goat anti-rabbit IgG-HRP: sc-2030 (dilution range: 1:2000-1:5000), Cruz Marker™ Molecular Weight Standards: sc-2035, TBS Blotto A Blocking Reagent: sc-2333 and Western Blotting Luminol Reagent: sc-2048. 2) Immunoprecipitation: use Protein A/G PLUS-Agarose: sc-2003 (0.5 ml agarose/2.0 ml). 3) Immunofluorescence: use goat anti-rabbit IgG-FITC: sc-2012 (dilution range: 1:100-1:400) or goat anti-rabbit IgG-TR: sc-2780 (dilution range: 1:100-1:400) with UltraCruz™ Mounting Medium: sc-24941.

DATA



Fcrls (M-60): sc-66889. Western blot analysis of Fcrls expression in IB4 whole cell lysate.

STORAGE

Store at 4° C, **DO NOT FREEZE**. Stable for one year from the date of shipment. Non-hazardous. No MSDS required.

PROTOCOLS

See our web site at www.scbt.com or our catalog for detailed protocols and support products.