

LOXL2 (H-65): sc-66950

BACKGROUND

Lysyl oxidase (LOX) proteins belong to a family of enzymes that oxidize primary amine substrated to reactive aldehydes. In fibrillar collagens and elastin, LOX catalyzes the lysine-derived cross-links of collagen fibrils and insoluble elastic fibers in the extracellular matrix. It can localize both to the nucleus and the cytoplasm. LOX is involved in tumor suppression, cell motility, cellular senescence and developmental regulation. There are four homologs of LOX, lysyl oxidase-like proteins, designated LOX-like (LOXL1-LOXL4) proteins. LOXL2 is an extracellular protein that localizes specifically to sites of elastogenesis. It serves as a cross-linking enzyme, controlling the deposition of elastin and interacts with Fibulin-5. LOXL2 and LOXL3 can interact and cooperate with the Snail protein to downregulate E-cadherin expression. In epithelial cells, overexpression of LOXL2 or LOXL3 may induce an epithelial-mesenchymal transitions process, an important element in tumor progression. Knockdown of the LOXL2 protein significantly decreases tumor growth.

CHROMOSOMAL LOCATION

Genetic locus: LOXL2 (human) mapping to 8p21.3; Loxl2 (mouse) mapping to 14 D2.

SOURCE

LOXL2 (H-65) is a rabbit polyclonal antibody raised against amino acids 161-225 mapping within an internal region of LOXL2 of human origin.

PRODUCT

Each vial contains 200 µg IgG in 1.0 ml of PBS with < 0.1% sodium azide and 0.1% gelatin.

RESEARCH USE

For research use only, not for use in diagnostic procedures.

APPLICATIONS

LOXL2 (H-65) is recommended for detection of LOXL2 of mouse, rat and human origin by Western Blotting (starting dilution 1:200, dilution range 1:100-1:1000), immunoprecipitation [1-2 µg per 100-500 µg of total protein (1 ml of cell lysate)], immunofluorescence (starting dilution 1:50, dilution range 1:50-1:500), immunohistochemistry (including paraffin-embedded sections) (starting dilution 1:50, dilution range 1:50-1:500) and solid phase ELISA (starting dilution 1:30, dilution range 1:30-1:3000).

LOXL2 (H-65) is also recommended for detection of LOXL2 in additional species, including equine, canine and bovine.

Suitable for use as control antibody for LOXL2 siRNA (h): sc-45222, LOXL2 siRNA (m): sc-45223, LOXL2 shRNA Plasmid (h): sc-45222-SH, LOXL2 shRNA Plasmid (m): sc-45223-SH, LOXL2 shRNA (h) Lentiviral Particles: sc-45222-V and LOXL2 shRNA (m) Lentiviral Particles: sc-45223-V.

Molecular Weight of LOXL2: 95 kDa.

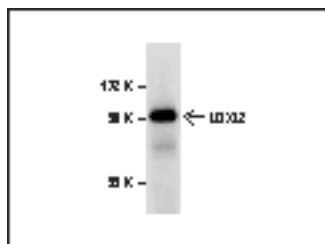
Molecular Weight of LOXL2 proteolytically processed peptide: 63 kDa.

Positive Controls: mouse heart extract: sc-2254.

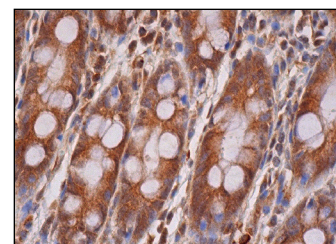
RECOMMENDED SECONDARY REAGENTS

To ensure optimal results, the following support (secondary) reagents are recommended: 1) Western Blotting: use goat anti-rabbit IgG-HRP: sc-2004 (dilution range: 1:2000-1:100,000) or Cruz Marker™ compatible goat anti-rabbit IgG-HRP: sc-2030 (dilution range: 1:2000-1:5000), Cruz Marker™ Molecular Weight Standards: sc-2035, TBS Blotto A Blocking Reagent: sc-2333 and Western Blotting Luminol Reagent: sc-2048. 2) Immunoprecipitation: use Protein A/G PLUS-Agarose: sc-2003 (0.5 ml agarose/2.0 ml). 3) Immunofluorescence: use goat anti-rabbit IgG-FITC: sc-2012 (dilution range: 1:100-1:400) or goat anti-rabbit IgG-TR: sc-2780 (dilution range: 1:100-1:400) with UltraCruz™ Mounting Medium: sc-24941. 4) Immunohistochemistry: use ImmunoCruz™: sc-2051 or ABC: sc-2018 rabbit IgG Staining Systems.

DATA



LOXL2 (H-65) sc-66950. Western blot analysis of LOXL2 in mouse heart tissue extract.



LOXL2 (H-65): sc-66950. Immunoperoxidase staining of formalin fixed, paraffin-embedded human rectum tissue showing cytoplasmic staining of glandular cells.

STORAGE

Store at 4° C, **DO NOT FREEZE**. Stable for one year from the date of shipment. Non-hazardous. No MSDS required.

PROTOCOLS

See our web site at www.scbt.com or our catalog for detailed protocols and support products.

MONOS
Satisfaction
Guaranteed

Try **LOXL2 (3C5): sc-293427**, our highly recommended monoclonal alternative to LOXL2 (H-65).