

LOXL4 (H-70): sc-66951

BACKGROUND

Lysyl oxidase (LOX) proteins belong to a family of enzymes that oxidize primary amine substrated to reactive aldehydes. In fibrillar collagens and elastin, LOX catalyzes the lysine-derived cross-links of collagen fibrils and insoluble elastic fibers within the extracellular matrix. It can localize both to the nucleus and the cytoplasm. LOX is involved in tumor suppression, cell motility, cellular senescence and developmental regulation. There are four homologs of LOX, lysyl oxidase-like proteins, designated LOX-like (LOXL1-LOXL4) proteins. LOXL4 is an extracellular protein that is widely expressed. Highest expression levels have been detected in testis, pancreas, cartilage and skeletal muscle.

REFERENCES

1. Ito, H., et al. 2001. Molecular cloning and biological activity of a novel LOX-related gene expressed in cartilage. *J. Biol. Chem.* 276: 24023-24029.
2. Asuncion, L., et al. 2001. A novel human lysyl oxidase-like gene (LOXL4) on chromosome 10q24 has an altered scavenger receptor cysteine rich domain. *Matrix Biol.* 20: 487-491.
3. Maki, J.M., et al. 2001. Cloning and characterization of a fifth human LOX isoenzyme: the third member of the LOX-related subfamily with four scavenger receptor cysteine-rich domains. *Matrix Biol.* 20: 493-496.

CHROMOSOMAL LOCATION

Genetic locus: LOXL4 (human) mapping to 10q24.2; Loxl4 (mouse) mapping to 19 C3.

SOURCE

LOXL4 (H-70) is a rabbit polyclonal antibody raised against amino acids 211-280 mapping within an internal region of LOXL4 of human origin.

PRODUCT

Each vial contains 200 µg IgG in 1.0 ml of PBS with < 0.1% sodium azide and 0.1% gelatin.

APPLICATIONS

LOXL4 (H-70) is recommended for detection of LOXL4 of human and, to a lesser extent, mouse and rat origin by Western Blotting (starting dilution 1:200, dilution range 1:100-1:1000), immunoprecipitation [1-2 µg per 100-500 µg of total protein (1 ml of cell lysate)], immunofluorescence (starting dilution 1:50, dilution range 1:50-1:500) and solid phase ELISA (starting dilution 1:30, dilution range 1:30-1:3000).

LOXL4 (H-70) is also recommended for detection of LOXL4 in additional species, including canine and bovine.

Suitable for use as control antibody for LOXL4 siRNA (h): sc-45226, LOXL4 siRNA (m): sc-45227, LOXL4 shRNA Plasmid (h): sc-45226-SH, LOXL4 shRNA Plasmid (m): sc-45227-SH, LOXL4 shRNA (h) Lentiviral Particles: sc-45226-V and LOXL4 shRNA (m) Lentiviral Particles: sc-45227-V.

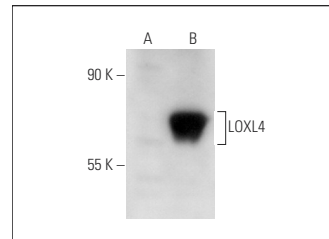
Molecular Weight of LOXL4: 84 kDa.

Positive Controls: HOS cell lysate: sc-2275, LOXL4 (h): 293T Lysate: sc-173382 or T24 cell lysate: sc-2292.

RECOMMENDED SECONDARY REAGENTS

To ensure optimal results, the following support (secondary) reagents are recommended: 1) Western Blotting: use goat anti-rabbit IgG-HRP: sc-2004 (dilution range: 1:2000-1:100,000) or Cruz Marker™ compatible goat anti-rabbit IgG-HRP: sc-2030 (dilution range: 1:2000-1:5000), Cruz Marker™ Molecular Weight Standards: sc-2035, TBS Blotto A Blocking Reagent: sc-2333 and Western Blotting Luminol Reagent: sc-2048. 2) Immunoprecipitation: use Protein A/G PLUS-Agarose: sc-2003 (0.5 ml agarose/2.0 ml). 3) Immunofluorescence: use goat anti-rabbit IgG-FITC: sc-2012 (dilution range: 1:100-1:400) or goat anti-rabbit IgG-TR: sc-2780 (dilution range: 1:100-1:400) with UltraCruz™ Mounting Medium: sc-24941.

DATA



LOXL4 (H-70): sc-66951. Western blot analysis of LOXL4 expression in non-transfected: sc-117752 (A) and human LOXL4 transfected: sc-173382 (B) 293T whole cell lysates.

STORAGE

Store at 4° C, **DO NOT FREEZE**. Stable for one year from the date of shipment. Non-hazardous. No MSDS required.

RESEARCH USE

For research use only, not for use in diagnostic procedures.

PROTOCOLS

See our web site at www.scbt.com or our catalog for detailed protocols and support products.

MONOS
Satisfaction
Guaranteed

Try **LOXL4 (D-11): sc-374121** or **LOXL4 (B-6): sc-365822**, our highly recommended monoclonal alternatives to LOXL4 (H-70).