

Matrilin-2 (H-65): sc-66959

BACKGROUND

The matrilin family proteins are secreted extracellular matrix proteins. Matrilin-1 is a homotrimer that binds to collagen and is a component of the extracellular matrix of nonarticular cartilage. It is secreted primarily by chondrocytes in a characteristic spatial, temporal and developmental stage-specific pattern during skeletogenesis. Matrilin-2 is a secreted protein involved in matrix assembly. Matrilin-3 is a secreted protein expressed solely in cartilaginous tissues. It is important in the extracellular matrix of cartilage and in the formation of extracellular filamentous networks. Matrilin-4, expressed in embryonic kidney, lung and placenta, is a secreted protein important to the extracellular matrix of cartilage.

REFERENCES

1. Deak, F., et al. 1999. The matrilins: a novel family of oligomeric extracellular matrix proteins. *Matrix Biol.* 18: 55-64.
2. Strusberg, I., et al. 2002. Association analysis of genotypic frequencies of matrilin-1 gene in patients with osteoarthritis. *Clin. Exp. Rheumatol.* 20: 543-545.
3. Ohno, S., et al. 2003. Immunohistochemical study of matrilin-1 in arthritic articular cartilage of the mandibular condyle. *J. Oral Pathol. Med.* 32: 237-242.
4. Wiberg, C., et al. 2003. Complexes of matrilin-1 and biglycan or decorin connect collagen VI microfibrils to both collagen II and aggrecan. *J. Biol. Chem.* 278: 37698-37704.
5. Mann H.H., et al. 2004. Interactions between the cartilage oligomeric matrix protein and matrilins. Implications for matrix assembly and the pathogenesis of chondrodysplasias. *J. Biol. Chem.* 279: 25294-25298.

CHROMOSOMAL LOCATION

Genetic locus: MATN2 (human) mapping to 8q22.1; Matn2 (mouse) mapping to 15 B3.1.

SOURCE

Matrilin-2 (H-65) is a rabbit polyclonal antibody raised against amino acids 68-132 mapping near the N-terminus of Matrilin-2 of human origin.

PRODUCT

Each vial contains 200 µg IgG in 1.0 ml of PBS with < 0.1% sodium azide and 0.1% gelatin.

STORAGE

Store at 4° C, ****DO NOT FREEZE****. Stable for one year from the date of shipment. Non-hazardous. No MSDS required.

PROTOCOLS

See our web site at www.scbt.com or our catalog for detailed protocols and support products.

APPLICATIONS

Matrilin-2 (H-65) is recommended for detection of Matrilin-2 of mouse, rat and human origin by Western Blotting (starting dilution 1:200, dilution range 1:100-1:1000), immunoprecipitation [1-2 µg per 100-500 µg of total protein (1 ml of cell lysate)], immunofluorescence (starting dilution 1:50, dilution range 1:50-1:500), immunohistochemistry (including paraffin-embedded sections) (starting dilution 1:50, dilution range 1:50-1:500) and solid phase ELISA (starting dilution 1:30, dilution range 1:30-1:3000).

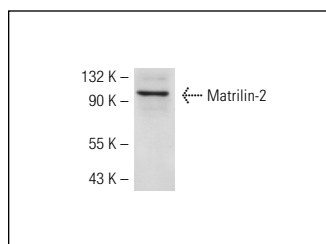
Matrilin-2 (H-65) is also recommended for detection of Matrilin-2 in additional species, including equine, canine and bovine.

Suitable for use as control antibody for Matrilin-2 siRNA (h): sc-45447, Matrilin-2 siRNA (m): sc-45448, Matrilin-2 shRNA Plasmid (h): sc-45447-SH, Matrilin-2 shRNA Plasmid (m): sc-45448-SH, Matrilin-2 shRNA (h) Lentiviral Particles: sc-45447-V and Matrilin-2 shRNA (m) Lentiviral Particles: sc-45448-V.

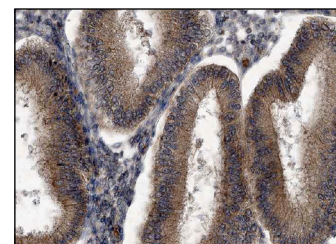
Molecular Weight of Matrilin-2: 107 kDa.

Positive Controls: Jurkat whole cell lysate: sc-2204.

DATA



Matrilin-2 (H-65): sc-66959. Western blot analysis of Matrilin-2 expression in Jurkat whole cell lysate.



Matrilin-2 (H-65): sc-66959. Immunoperoxidase staining of formalin fixed, paraffin-embedded human uterus tissue showing cytoplasmic staining of glandular cells at high magnification. Kindly provided by The Swedish Human Protein Atlas (HPA) program.

RESEARCH USE

For research use only, not for use in diagnostic procedures.



Try **Matrilin-2 (2B8): sc-293397**, our highly recommended monoclonal alternative to Matrilin-2 (H-65).