

# Mucin 15 (M-210): sc-66975

## BACKGROUND

The mucins are a family of highly glycosylated, secreted proteins with a basic structure consisting of a variable number of tandem repeats (VNTRs). Membrane-associated and secretory mucins are high molecular weight glycoproteins of the glycocalyx (polysaccharide biofilm) that protects mucosal epithelium from particulate matter and microorganisms. Epithelial mucins are large, secreted and cell surface glycoproteins crucial for adhesion modulation, signaling and epithelial cell protection. The number of repeats is highly polymorphic and varies among different alleles. The mucin family consists of Mucins 1-4, Mucin 5 (AC and B), Mucins 6-8, Mucins 11-13 and Mucins 15-17. Mucin 15 is involved in cell adhesion to the extracellular matrix. It is primarily expressed in prostate, testis, lung, spleen, thymus, ovary, small intestine, colon, bone marrow, lymph node, lung and peripheral blood leukocytes. Mucin 15 is a highly glycosylated protein.

## REFERENCES

1. Lan, M.S., et al. 1990. Cloning and sequencing of a human pancreatic tumor mucin cDNA. *J. Biol. Chem.* 265: 15294-15299.
2. Moniaux, N., et al. 2001. Structural organization and classification of the human mucin genes. *Front. Biosci.* 6: D1192-D1206.
3. Leikauf, G.D., et al. 2002. Mucin apoprotein expression in COPD. *Chest* 121: 166S-182S.
4. Pallesen, L.T., et al. 2002. Isolation and characterization of MUC15, a novel cell membrane-associated mucin. *Eur. J. Biochem.* 269: 2755-2763.
5. Byrd, J.C., et al. 2004. Mucins and mucin binding proteins in colorectal cancer. *Cancer Metastasis Rev.* 23: 77-99.

## CHROMOSOMAL LOCATION

Genetic locus: MUC15 (human) mapping to 11p14.3; Muc15 (mouse) mapping to 2 E3.

## SOURCE

Mucin 15 (M-210) is a rabbit polyclonal antibody raised against amino acids 23-232 mapping within an N-terminal extracellular domain of Mucin 15 of mouse origin.

## PRODUCT

Each vial contains 200 µg IgG in 1.0 ml of PBS with < 0.1% sodium azide and 0.1% gelatin.

## STORAGE

Store at 4° C, **\*\*DO NOT FREEZE\*\***. Stable for one year from the date of shipment. Non-hazardous. No MSDS required.

## PROTOCOLS

See our web site at [www.scbt.com](http://www.scbt.com) or our catalog for detailed protocols and support products.

## APPLICATIONS

Mucin 15 (M-210) is recommended for detection of Mucin 15 of mouse and rat origin by Western Blotting (starting dilution 1:200, dilution range 1:100-1:1000), immunoprecipitation [1-2 µg per 100-500 µg of total protein (1 ml of cell lysate)], immunofluorescence (starting dilution 1:50, dilution range 1:50-1:500) and solid phase ELISA (starting dilution 1:30, dilution range 1:30-1:3000).

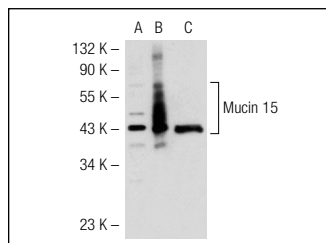
Suitable for use as control antibody for Mucin 15 siRNA (m): sc-45695, Mucin 15 shRNA Plasmid (m): sc-45695-SH and Mucin 15 shRNA (m) Lentiviral Particles: sc-45695-V.

Molecular Weight of Mucin 15: 36 kDa.

## RECOMMENDED SECONDARY REAGENTS

To ensure optimal results, the following support (secondary) reagents are recommended: 1) Western Blotting: use goat anti-rabbit IgG-HRP: sc-2004 (dilution range: 1:2000-1:100,000) or Cruz Marker™ compatible goat anti-rabbit IgG-HRP: sc-2030 (dilution range: 1:2000-1:5000), Cruz Marker™ Molecular Weight Standards: sc-2035, TBS Blotto A Blocking Reagent: sc-2333 and Western Blotting Luminol Reagent: sc-2048. 2) Immunoprecipitation: use Protein A/G PLUS-Agarose: sc-2003 (0.5 ml agarose/2.0 ml). 3) Immunofluorescence: use goat anti-rabbit IgG-FITC: sc-2012 (dilution range: 1:100-1:400) or goat anti-rabbit IgG-TR: sc-2780 (dilution range: 1:100-1:400) with UltraCruz™ Mounting Medium: sc-24941.

## DATA



Mucin 15 (M-210): sc-66975. Western blot analysis of Mucin 15 expression in non-transfected 293T: sc-117752 (A), mouse Mucin 15 transfected 293T: sc-127174 (B) and HeLa (C) whole cell lysates.

## RESEARCH USE

For research use only, not for use in diagnostic procedures.

**MONOS**  
Satisfaction  
Guaranteed

Try **Mucin 15 (H-5): sc-365746**, our highly recommended monoclonal alternative to Mucin 15 (M-210).