

NALP1 (H-300): sc-66992

BACKGROUND

NACHT-, LRR- and PYD-containing protein 1 (NALP1), also designated caspase recruitment domain protein 7, is a cytoplasmic protein. NALP1 contains a putative nucleotide binding site, a region of leucine-rich repeats and death domain folds at both termini, providing protein/protein association functions such as caspase recruitment. NALP1 is involved in the innate immune response and is a component of the inflammasome. It forms cytoplasmic structures called death effector filaments and enhances APAF1 and cytochrome c-dependent activation of pro-caspase-9 and consecutive apoptosis. NALP1 is widely expressed in thymus, heart, spleen and peripheral blood leukocytes.

REFERENCES

- Hiller, S., Kohl, A., Fiorito, F., Herrmann, T., Wider, G., Tschopp, J., Grutter, M.G. and Wuthrich, K. 2003. NMR structure of the apoptosis- and inflammation-related NALP1 pyrin domain. *Structure* 11: 1199-1205.
- Chamaillard, M., Girardin, S.E., Viala, J. and Philpott, D.J. 2003. Nods, NALPs and NAIP: intracellular regulators of bacterial-induced inflammation. *Cell. Microbiol.* 5: 581-592.
- Damiano, J.S., Oliveira, V., Welsh, K. and Reed, J.C. 2004. Heterotypic interactions among NACHT domains: implications for regulation of innate immune responses. *Biochem. J.* 381: 213-219.
- Sanz, C., Calasanz, M.J., Andreu, E., Richard, C., Prosper, F. and Fernandez-Luna, J.L. 2004. NALP1 is a transcriptional target for cAMP-response-element-binding protein (CREB) in myeloid leukaemia cells. *Biochem. J.* 384: 281-286.
- Liu, F., Lo, C.F., Ning, X., Kajkowski, E.M., Jin, M., Chiriac, C., Gonzales, C., Naureckiene, S., Lock, Y.W., Pong, K., Zaleska, M.M., Jacobsen, J.S., Silverman, S. and Ozenberger, B.A. 2004. Expression of NALP1 in cerebellar granule neurons stimulates apoptosis. *Cell. Signal.* 16: 1013-1021.

CHROMOSOMAL LOCATION

Genetic locus: NLRP1 (human) mapping to 17p13.2.

SOURCE

NALP1 (H-300) is a rabbit polyclonal antibody raised against amino acids 1-300 mapping at the N-terminus of NALP1 of human origin.

PRODUCT

Each vial contains 200 µg IgG in 1.0 ml of PBS with < 0.1% sodium azide and 0.1% gelatin.

STORAGE

Store at 4° C, ****DO NOT FREEZE****. Stable for one year from the date of shipment. Non-hazardous. No MSDS required.

PROTOCOLS

See our web site at www.scbt.com or our catalog for detailed protocols and support products.

APPLICATIONS

NALP1 (H-300) is recommended for detection of all NALP1 isoforms of human origin by Western Blotting (starting dilution 1:200, dilution range 1:100-1:1000), immunoprecipitation [1-2 µg per 100-500 µg of total protein (1 ml of cell lysate)], immunofluorescence (starting dilution 1:50, dilution range 1:50-1:500) and solid phase ELISA (starting dilution 1:30, dilution range 1:30-1:3000).

Suitable for use as control antibody for NALP1 siRNA (h): sc-45479, NALP1 shRNA Plasmid (h): sc-45479-SH and NALP1 shRNA (h) Lentiviral Particles: sc-45479-V.

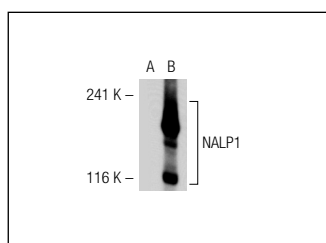
Molecular Weight of NALP1 mouse and rat isoforms: 134 kDa.

Positive Controls: NALP1 (h2): 293T Lysate: sc-116236.

RECOMMENDED SECONDARY REAGENTS

To ensure optimal results, the following support (secondary) reagents are recommended: 1) Western Blotting: use goat anti-rabbit IgG-HRP: sc-2004 (dilution range: 1:2000-1:100,000) or Cruz Marker™ compatible goat anti-rabbit IgG-HRP: sc-2030 (dilution range: 1:2000-1:5000), Cruz Marker™ Molecular Weight Standards: sc-2035, TBS Blotto A Blocking Reagent: sc-2333 and Western Blotting Luminol Reagent: sc-2048. 2) Immunoprecipitation: use Protein A/G PLUS-Agarose: sc-2003 (0.5 ml agarose/2.0 ml). 3) Immunofluorescence: use goat anti-rabbit IgG-FITC: sc-2012 (dilution range: 1:100-1:400) or goat anti-rabbit IgG-TR: sc-2780 (dilution range: 1:100-1:400) with UltraCruz™ Mounting Medium: sc-24941.

DATA



NALP1 (H-300): sc-66992. Western blot analysis of NALP1 expression in non-transfected: sc-117752 (A) and human NALP1 transfected: sc-116236 (B) 293T whole cell lysates.

RESEARCH USE

For research use only, not for use in diagnostic procedures.

MONOS
Satisfaction
Guaranteed

Try **NALP1 (B-2): sc-166368** or **NALP1 (6D598): sc-71641**, our highly recommended monoclonal alternatives to NALP1 (H-300).