

PELP1 (H-300): sc-67027

BACKGROUND

The estrogen receptor plays an important role in cancer progression. PELP1/MNAR [proline-, glutamic acid- and leucine-rich protein 1/modulator of non-genomic activity of estrogen receptor (ER)], a novel co-regulatory protein, modulates genomic as well as nongenomic activity of estrogen receptors. PELP1 plays an essential role in the proliferation of cancerous endometrial cells. PELP1 expression (in both the stroma and epithelial cells) and localization are widely deregulated in endometrial cancers. In addition, PELP1 and ER β localize predominantly in the cytoplasm of high-grade endometrial tumors. PELP1 co-activates ER-mediated transcription and also serves as a corepressor of other nuclear hormone receptors (NR)- and non NR-sequence-specific transcription factors tested, including GR, Nur77, AP1, NF κ B and TCF/SRF. PELP1 participates in chromatin remodeling activity via displacement of Histone 1 in cancer cells. PELP1 is expressed in all stages of endometrium.

CHROMOSOMAL LOCATION

Genetic locus: PELP1 (human) mapping to 17p13.2; Pelp1 (mouse) mapping to 11 B3.

SOURCE

PELP1 (H-300) is a rabbit polyclonal antibody raised against amino acids 39-338 mapping near the N-terminus of PELP1 of human origin.

PRODUCT

Each vial contains 200 μ g IgG in 1.0 ml of PBS with < 0.1% sodium azide and 0.1% gelatin.

STORAGE

Store at 4° C, ****DO NOT FREEZE****. Stable for one year from the date of shipment. Non-hazardous. No MSDS required.

APPLICATIONS

PELP1 (H-300) is recommended for detection of PELP1 of mouse, rat and human origin by Western Blotting (starting dilution 1:200, dilution range 1:100-1:1000), immunoprecipitation [1-2 μ g per 100-500 μ g of total protein (1 ml of cell lysate)], immunofluorescence (starting dilution 1:50, dilution range 1:50-1:500) and solid phase ELISA (starting dilution 1:30, dilution range 1:30-1:3000).

PELP1 (H-300) is also recommended for detection of PELP1 in additional species, including equine, canine, bovine and porcine.

Suitable for use as control antibody for PELP1 siRNA (h): sc-45287, PELP1 siRNA (m): sc-45288, PELP1 shRNA Plasmid (h): sc-45287-SH, PELP1 shRNA Plasmid (m): sc-45288-SH, PELP1 shRNA (h) Lentiviral Particles: sc-45287-V and PELP1 shRNA (m) Lentiviral Particles: sc-45288-V.

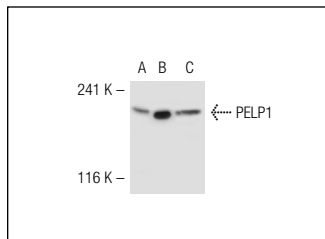
Molecular Weight of PELP1: 160 kDa.

Positive Controls: mouse testis extract: sc-2405, RAW 264.7 whole cell lysate: sc-2211 or PELP1 (h): 293T Lysate: sc-117220.

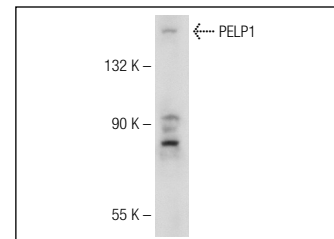
RECOMMENDED SECONDARY REAGENTS

To ensure optimal results, the following support (secondary) reagents are recommended: 1) Western Blotting: use goat anti-rabbit IgG-HRP: sc-2004 (dilution range: 1:2000-1:100,000) or Cruz Marker™ compatible goat anti-rabbit IgG-HRP: sc-2030 (dilution range: 1:2000-1:5000), Cruz Marker™ Molecular Weight Standards: sc-2035, TBS Blotto A Blocking Reagent: sc-2333 and Western Blotting Luminol Reagent: sc-2048. 2) Immunoprecipitation: use Protein A/G PLUS-Agarose: sc-2003 (0.5 ml agarose/2.0 ml). 3) Immunofluorescence: use goat anti-rabbit IgG-FITC: sc-2012 (dilution range: 1:100-1:400) or goat anti-rabbit IgG-TR: sc-2780 (dilution range: 1:100-1:400) with UltraCruz™ Mounting Medium: sc-24941.

DATA



PELP1 (H-300): sc-67027. Western blot analysis of PELP1 expression in non-transfected 293T: sc-117752 (A), human PELP1 transfected 293T: sc-117220 (B) and HeLa (C) whole cell lysates.



PELP1 (H-300): sc-67027. Western blot analysis of PELP1 expression in RAW 264.7 whole cell lysate.

RESEARCH USE

For research use only, not for use in diagnostic procedures.

PROTOCOLS

See our web site at www.scbt.com or our catalog for detailed protocols and support products.

MONOS
Satisfaction
Guaranteed

Try **PELP1 (E-1): sc-390599** or **PELP1 (D-5): sc-393534**, our highly recommended monoclonal alternatives to PELP1 (H-300).