

RYBP (H-60): sc-67058

BACKGROUND

The products of the polycomb group (PcG) of genes are necessary for the maintenance of transcriptional repression of a number of important developmental genes, including the homeotic genes. RYBP is a member of the mammalian polycomb complex. RYBP (RING1- and YY1-binding protein) interacts specifically with the E2F2 and E2F3 family members, dependent on the marked box domain in these proteins. YY1 and RYBP, in combination with either E2F2 or E2F3, can stimulate Cdc6 promoter activity synergistically, at G₁/S of the cell cycle. RYBP also complexes with both RING1 proteins (RING1 and RING1B) and with M33, two mutually interacting sets of proteins of the mammalian Polycomb complex. RING1 binds RYBP and M33 through the same C-terminal domain, whereas the RYBP-M33 interaction takes place through an M33 domain not involved in binding. RYBP is widely expressed with highest levels in lymphoid tissues and placenta.

CHROMOSOMAL LOCATION

Genetic locus: RYBP (human) mapping to 3p13; Rybp (mouse) mapping to 6 D3.

SOURCE

RYBP (H-60) is a rabbit polyclonal antibody raised against amino acids 89-148 mapping within an internal region of RYBP of human origin.

PRODUCT

Each vial contains 200 µg IgG in 1.0 ml of PBS with < 0.1% sodium azide and 0.1% gelatin.

Available as TransCruz reagent for Gel Supershift and ChIP applications, sc-67058 X, 200 µg/0.1 ml.

STORAGE

Store at 4° C, ****DO NOT FREEZE****. Stable for one year from the date of shipment. Non-hazardous. No MSDS required.

APPLICATIONS

RYBP (H-60) is recommended for detection of RYBP of mouse, rat and human origin by Western Blotting (starting dilution 1:200, dilution range 1:100-1:1000), immunoprecipitation [1-2 µg per 100-500 µg of total protein (1 ml of cell lysate)], immunofluorescence (starting dilution 1:50, dilution range 1:50-1:500) and solid phase ELISA (starting dilution 1:30, dilution range 1:30-1:3000).

RYBP (H-60) is also recommended for detection of RYBP in additional species, including equine, canine and porcine.

Suitable for use as control antibody for RYBP siRNA (h): sc-106751, RYBP siRNA (m): sc-77379, RYBP shRNA Plasmid (h): sc-106751-SH, RYBP shRNA Plasmid (m): sc-77379-SH, RYBP shRNA (h) Lentiviral Particles: sc-106751-V and RYBP shRNA (m) Lentiviral Particles: sc-77379-V.

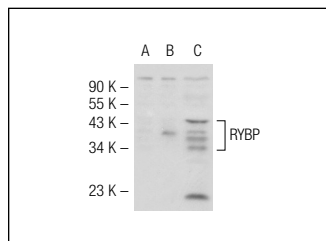
RYBP (H-60) X TransCruz antibody is recommended for Gel Supershift and ChIP applications.

Positive Controls: RYBP (h3): 293T Lysate: sc-158945 or K-562 whole cell lysate: sc-2203.

RECOMMENDED SECONDARY REAGENTS

To ensure optimal results, the following support (secondary) reagents are recommended: 1) Western Blotting: use goat anti-rabbit IgG-HRP: sc-2004 (dilution range: 1:2000-1:100,000) or Cruz Marker™ compatible goat anti-rabbit IgG-HRP: sc-2030 (dilution range: 1:2000-1:5000), Cruz Marker™ Molecular Weight Standards: sc-2035, TBS Blotto A Blocking Reagent: sc-2333 and Western Blotting Luminol Reagent: sc-2048. 2) Immunoprecipitation: use Protein A/G PLUS-Agarose: sc-2003 (0.5 ml agarose/2.0 ml). 3) Immunofluorescence: use goat anti-rabbit IgG-FITC: sc-2012 (dilution range: 1:100-1:400) or goat anti-rabbit IgG-TR: sc-2780 (dilution range: 1:100-1:400) with UltraCruz™ Mounting Medium: sc-24941.

DATA



RYBP (H-60): sc-67058. Western blot analysis of RYBP expression in non-transfected 293T: sc-117752 (A), human RYBP transfected 293T: sc-158945 (B) and K-562 (C) whole cell lysates.

RESEARCH USE

For research use only, not for use in diagnostic procedures.

PROTOCOLS

See our web site at www.scbt.com or our catalog for detailed protocols and support products.

MONOS
Satisfaction
Guaranteed

Try **RYBP (A-1): sc-374235**, our highly recommended monoclonal alternative to RYBP (H-60).