

Sall4 (H-120): sc-67067

BACKGROUND

Sall3 (SALL3, sal-like 3) and Sall4 (SALL4, sal-like 4) are mammalian homologs of the *Drosophila* region-specific homeotic gene spalt (sal), which encodes a zinc finger-containing transcription regulator. *Drosophila* spalt (sal) is an essential genetic component required for the specification of posterior head and anterior tail as opposed to trunk. Sall3 is expressed at 24 weeks of gestation in several regions of the human fetal brain, including neurons of the hippocampus formation and of mediodorsal and ventrolateral thalamic nuclei, Purkinje cells of the cerebellum, and a subset of neurons in the brainstem. Sall4 expression in early mouse embryos is gradually confined to the head region and the primitive streak, followed by prominent expression in the developing midbrain, branchial arches, limbs and genital papilla.

CHROMOSOMAL LOCATION

Genetic locus: SALL4 (human) mapping to 20q13.2.

SOURCE

Sall4 (H-120) is a rabbit polyclonal antibody raised against amino acids 241-360 mapping within an internal region of Sall4 of human origin.

PRODUCT

Each vial contains 200 µg IgG in 1.0 ml of PBS with < 0.1% sodium azide and 0.1% gelatin.

Available as TransCruz reagent for Gel Supershift and ChIP applications, sc-67067 X, 200 µg/0.1 ml.

STORAGE

Store at 4° C, **DO NOT FREEZE**. Stable for one year from the date of shipment. Non-hazardous. No MSDS required.

APPLICATIONS

Sall4 (H-120) is recommended for detection of Sall4 of human origin by Western Blotting (starting dilution 1:200, dilution range 1:100-1:1000), immunoprecipitation [1-2 µg per 100-500 µg of total protein (1 ml of cell lysate)], immunofluorescence (starting dilution 1:50, dilution range 1:50-1:500) and solid phase ELISA (starting dilution 1:30, dilution range 1:30-1:3000).

Sall4 (H-120) is also recommended for detection of Sall4 in additional species, including equine and canine.

Suitable for use as control antibody for Sall4 siRNA (h): sc-45808, Sall4 shRNA Plasmid (h): sc-45808-SH and Sall4 shRNA (h) Lentiviral Particles: sc-45808-V.

Sall4 (H-120) X TransCruz antibody is recommended for Gel Supershift and ChIP applications.

Molecular Weight of Sall4 isoform A: 165 kDa.

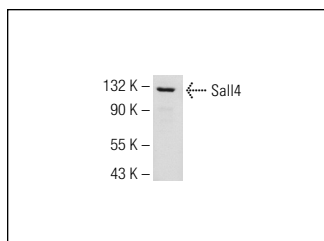
Molecular Weight of Sall4 isoform B: 95 kDa.

Positive Controls: NTERA-2 cl.D1 whole cell lysate: sc-364181, Hep G2 cell lysate: sc-2227 or HeLa nuclear extract: sc-2120.

RECOMMENDED SECONDARY REAGENTS

To ensure optimal results, the following support (secondary) reagents are recommended: 1) Western Blotting: use goat anti-rabbit IgG-HRP: sc-2004 (dilution range: 1:2000-1:100,000) or Cruz Marker™ compatible goat anti-rabbit IgG-HRP: sc-2030 (dilution range: 1:2000-1:5000), Cruz Marker™ Molecular Weight Standards: sc-2035, TBS Blotto A Blocking Reagent: sc-2333 and Western Blotting Luminol Reagent: sc-2048. 2) Immunoprecipitation: use Protein A/G PLUS-Agarose: sc-2003 (0.5 ml agarose/2.0 ml). 3) Immunofluorescence: use goat anti-rabbit IgG-FITC: sc-2012 (dilution range: 1:100-1:400) or goat anti-rabbit IgG-TR: sc-2780 (dilution range: 1:100-1:400) with UltraCruz™ Mounting Medium: sc-24941.

DATA



Sall4 (H-120): sc-67067. Western blot analysis of Sall4 expression in NTERA-2 cl.D1 whole cell lysate.

RESEARCH USE

For research use only, not for use in diagnostic procedures.

PROTOCOLS

See our web site at www.scbt.com or our catalog for detailed protocols and support products.


 MONOS
Satisfation
Guaranteed

Try **Sall4 (G-3): sc-166033** or **Sall4 (EE-30): sc-101147**, our highly recommended monoclonal alternatives to Sall4 (H-120).