

Sec15A (H-60): sc-67070

BACKGROUND

Exocytosis, crucial in membrane trafficking, mediates hormone and neurotransmitter secretion out of the cell as well as the incorporation of membrane proteins and lipids to the plasma membrane. It is crucial for cell-cell communication, cell growth and cell polarity. The exocyst complex is a multi-protein complex that consists of Sec3, Sec5, Sec6, Sec8, Sec10, Sec15, Exo70 and Exo84 and is essential for targeting exocytic vesicles to specific docking sites on the plasma membrane. The exocyst complex inhibits Tubulin polymerization *in vitro*, which implicates the exocyst in modulating microtubule dynamics underlying exocytosis. Sec15A (also designated Sec15L or Sec15p) and Sec15B (also designated Sec15L2) both belong to the Sec15 family of proteins. Sec15 can co-localize with Rab 11 (a recycling endosome marker) and exhibits a GTP-dependent interaction with the Rab 11 GTPase.

REFERENCES

1. Wang, S., Liu, Y., Adamson, C.L., Valdez, G., Guo, W. and Hsu, S.C. 2004. The mammalian exocyst, a complex required for exocytosis, inhibits Tubulin polymerization. *J. Biol. Chem.* 279: 35958-35966.
2. Zhang, X.M., Ellis, S., Sritatana, A., Mitchell, C.A. and Rowe, T. 2004. Sec15 is an effector for the Rab 11 GTPase in mammalian cells. *J. Biol. Chem.* 279: 43027-43034.
3. Hsu, S.C., TerBush, D., Abraham, M. and Guo, W. 2004. The exocyst complex in polarized exocytosis. *Int. Rev. Cytol.* 233: 243-265.
4. SWISS-PROT/TrEMBL (Q8TAG9). World Wide Web URL: <http://www.expasy.ch/sprot/sprot-top.html>
5. SWISS-PROT/TrEMBL (Q9Y2D4). World Wide Web URL: <http://www.expasy.ch/sprot/sprot-top.html>
6. <http://harvester.embl.de/harvester/Q9Y2/Q9Y2D4.htm>
7. <http://harvester.embl.de/harvester/Q8TA/Q8TAG9.htm>

CHROMOSOMAL LOCATION

Genetic locus: SEC15L1 (human) mapping to 10q23.33; Sec15I1 (mouse) mapping to 19 C2.

SOURCE

Sec15A (H-60) is a rabbit polyclonal antibody raised against amino acids 221-280 mapping within an internal region of Sec15A of human origin.

STORAGE

Store at 4° C, ****DO NOT FREEZE****. Stable for one year from the date of shipment. Non-hazardous. No MSDS required.

RESEARCH USE

For research use only, not for use in diagnostic procedures.

PROTOCOLS

See our web site at www.scbt.com or our catalog for detailed protocols and support products.

PRODUCT

Each vial contains 200 µg IgG in 1.0 ml of PBS with < 0.1% sodium azide and 0.1% gelatin.

APPLICATIONS

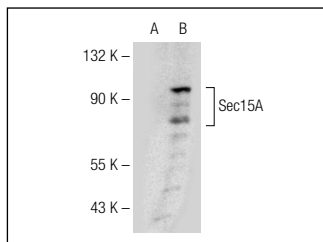
Sec15A (H-60) is recommended for detection of Sec15A of human origin by Western Blotting (starting dilution 1:200, dilution range 1:100-1:1000), immunoprecipitation [1–2 µg per 100–500 µg of total protein (1 ml of cell lysate)], immunofluorescence (starting dilution 1:50, dilution range 1:50-1:500) and solid phase ELISA (starting dilution 1:30, dilution range 1:30-1:3000).

Suitable for use as control antibody for Sec15A siRNA (h): sc-45347, Sec15A shRNA Plasmid (h): sc-45347-SH and Sec15A shRNA (h) Lentiviral Particles: sc-45347-V.

RECOMMENDED SECONDARY REAGENTS

To ensure optimal results, the following support (secondary) reagents are recommended: 1) Western Blotting: use goat anti-rabbit IgG-HRP: sc-2004 (dilution range: 1:2000-1:100,000) or Cruz Marker™ compatible goat anti-rabbit IgG-HRP: sc-2030 (dilution range: 1:2000-1:5000), Cruz Marker™ Molecular Weight Standards: sc-2035, TBS Blotto A Blocking Reagent: sc-2333 and Western Blotting Luminol Reagent: sc-2048. 2) Immunoprecipitation: use Protein A/G PLUS-Agarose: sc-2003 (0.5 ml agarose/2.0 ml). 3) Immunofluorescence: use goat anti-rabbit IgG-FITC: sc-2012 (dilution range: 1:100-1:400) or goat anti-rabbit IgG-TR: sc-2780 (dilution range: 1:100-1:400) with UltraCruz™ Mounting Medium: sc-24941.

DATA



Sec15A (H-60): sc-67070. Western blot analysis of Sec15A expression in non-transfected: sc-117752 (A) and human Sec15A transfected: sc-177905 (B) 293T whole cell lysates.