

## T2R1 (H-180): sc-67106

### BACKGROUND

The sense of taste is essential for the survival of organisms. For example, the ability to identify sweet-tasting foods enables animals to seek out food with high nutritive value, whereas the ability to identify bitter substances enables them to avoid the ingestion of potentially harmful substances. A family of integral membrane proteins are involved in taste perception and include T1R, which is involved in sweet taste perception and T2R which is involved in bitter taste perception. Both types of taste receptors couple to various G proteins to initiate signal transduction cascades. Specifically, T2R1 is expressed in subsets of taste receptor cells of the tongue and palate epithelium and exclusively in gustducin-positive cells.

### REFERENCES

- Chandrashekar, J., Mueller, K.L., Hoon, M.A., Adler, E., Feng, L., Guo, W., Zuker, C.S. and Ryba, N.J. 2000. T2Rs function as bitter taste receptors. *Cell* 100: 703-711.
- Ueda, T., Ugawa, S., Ishida, Y., Shibata, Y., Murakami, S. and Shimada, S. 2001. Identification of coding single-nucleotide polymorphisms in human taste receptor genes involving bitter tasting. *Biochem. Biophys. Res. Commun.* 285: 147-151.
- Margolskee, R.F. 2002. Molecular mechanisms of bitter and sweet taste transduction. *J. Biol. Chem.* 277: 1-4.
- Conte, C., Ebeling, M., Marcuz, A., Nef, P. and Andres-Barquin, P.J. 2002. Identification and characterization of human taste receptor genes belonging to the TAS2R family. *Cytogenet. Genome Res.* 98: 45-53.
- Wu, S.V., Rozengurt, N., Yang, M., Young, S.H., Sinnott-Smith, J. and Rozengurt, E. 2002. Expression of bitter taste receptors of the T2R family in the gastrointestinal tract and enteroendocrine STC-1 cells. *Proc. Natl. Acad. Sci. USA* 99: 2392-2397.
- Shi, P., Zhang, J., Yang, H. and Zhang, Y.P. 2003. Adaptive diversification of bitter taste receptor genes in Mammalian evolution. *Mol. Biol. Evol.* 20: 805-814.
- Zhang, Y., Hoon, M.A., Chandrashekar, J., Mueller, K.L., Cook, B., Wu, D., Zuker, C.S. and Ryba, N.J. 2003. Coding of sweet, bitter, and umami tastes: different receptor cells sharing similar signaling pathways. *Cell* 112: 293-301.
- Andres-Barquin, P.J. and Conte, C. 2004. Molecular basis of bitter taste: the T2R family of G protein-coupled receptors. *Cell Biochem. Biophys.* 41: 99-112.
- Fischer, A., Gilad, Y., Man, O. and Pääbo, S. 2005. Evolution of bitter taste receptors in humans and apes. *Mol. Biol. Evol.* 22: 432-436.

### CHROMOSOMAL LOCATION

Genetic locus: TAS2R1 (human) mapping to 5p15.31.

### SOURCE

T2R1 (H-180) is a rabbit polyclonal antibody raised against amino acids 1-180 mapping at the N-terminus of T2R1 of human origin.

### PRODUCT

Each vial contains 200 µg IgG in 1.0 ml of PBS with < 0.1% sodium azide and 0.1% gelatin.

### APPLICATIONS

T2R1 (H-180) is recommended for detection of T2R1 of human origin by Western Blotting (starting dilution 1:200, dilution range 1:100-1:1000), immunoprecipitation [1-2 µg per 100-500 µg of total protein (1 ml of cell lysate)], immunofluorescence (starting dilution 1:50, dilution range 1:50-1:500) and solid phase ELISA (starting dilution 1:30, dilution range 1:30-1:3000).

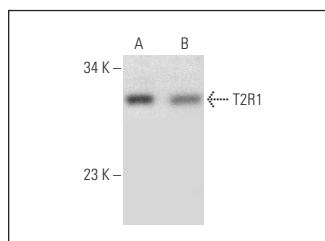
Suitable for use as control antibody for T2R1 siRNA (h): sc-45338, T2R1 shRNA Plasmid (h): sc-45338-SH and T2R1 shRNA (h) Lentiviral Particles: sc-45338-V.

Positive Controls: MDA-MB-231 cell lysate: sc-2232 or NCI-H292 whole cell lysate: sc-364179.

### RECOMMENDED SECONDARY REAGENTS

To ensure optimal results, the following support (secondary) reagents are recommended: 1) Western Blotting: use goat anti-rabbit IgG-HRP: sc-2004 (dilution range: 1:2000-1:100,000) or Cruz Marker™ compatible goat anti-rabbit IgG-HRP: sc-2030 (dilution range: 1:2000-1:5000), Cruz Marker™ Molecular Weight Standards: sc-2035, TBS Blotto A Blocking Reagent: sc-2333 and Western Blotting Luminol Reagent: sc-2048. 2) Immunoprecipitation: use Protein A/G PLUS-Agarose: sc-2003 (0.5 ml agarose/2.0 ml). 3) Immunofluorescence: use goat anti-rabbit IgG-FITC: sc-2012 (dilution range: 1:100-1:400) or goat anti-rabbit IgG-TR: sc-2780 (dilution range: 1:100-1:400) with UltraCruz™ Mounting Medium: sc-24941.

### DATA



T2R1 (H-180): sc-67106. Western blot analysis of T2R1 expression in MDA-MB-231 (A) and NCI-H292 (B) whole cell lysates.

### STORAGE

Store at 4° C, \*\*DO NOT FREEZE\*\*. Stable for one year from the date of shipment. Non-hazardous. No MSDS required.

### RESEARCH USE

For research use only, not for use in diagnostic procedures.