

Wolframin (H-215): sc-67180

BACKGROUND

The Wolframin gene encodes a protein found in endoplasmic reticulum membrane of several tissues including brain, pancreas, lung and placenta. Loss-of-function mutations in both alleles result in Wolfram syndrome (also known as DIDMOAD), an autosomal recessive disorder that causes juvenile diabetes mellitus, diabetes insipidus, optic atrophy and a number of neurological symptoms including deafness, ataxia and peripheral neuropathy. A large number and variety of mutations in this gene, particularly in exon 8, can be associated with Wolfram syndrome. Mutations in this gene can also cause autosomal dominant deafness 6 (DFNA6), also known as DFNA14 or DFNA38.

REFERENCES

- Osman, A.A., et al. 2003. Wolframin expression induces novel ion channel activity in endoplasmic reticulum membranes and increases intracellular calcium. *J. Biol. Chem.* 278: 52755-52762.
- Larsen, Z.M., et al. 2004. Evidence for linkage on chromosome 4p16.1 in type 1 diabetes Danish families and complete mutation scanning of the WFS1 (Wolframin) gene. *Diabet. Med.* 21: 218-222.
- Smith, C.J., et al. 2004. Phenotype-genotype correlations in a series of Wolfram syndrome families. *Diabetes Care* 27: 2003-2009.
- Yamaguchi, S., et al. 2004. Endoplasmic reticulum stress and N-glycosylation modulate protein. *Biochem. Biophys. Res. Commun.* 325: 250-256.
- Fonseca, S.G., et al. 2005. WFS1 is a novel component of the unfolded protein response and maintains homeostasis of the endoplasmic reticulum in pancreatic β cells. *J. Biol. Chem.* 280: 39609-39615.
- Koido, K., et al. 2005. Polymorphisms in Wolframin (WFS1) gene are possibly related to increased risk for mood disorders. *Int. J. Neuropsychopharmacol.* 8: 235-244.
- Philbrook, C., et al. 2005. Expressional and functional studies of Wolframin, the gene function deficient in Wolfram syndrome, in mice and patient cells. *Exp. Gerontol.* 40: 671-678.
- Swift, M. and Swift, RG. 2005. Wolframin mutations and hospitalization for psychiatric illness. *Mol. Psychiatry* 10: 799-803.
- Domenech, E., et al. 2006. Wolfram/DIDMOAD syndrome, a heterogenic and molecularly complex neurodegenerative disease. *Pediatr. Endocrinol. Rev.* 3: 249-257.

CHROMOSOMAL LOCATION

Genetic locus: WFS1 (human) mapping to 4p16.1; Wfs1 (mouse) mapping to 5 B3.

SOURCE

Wolframin (H-215) is a rabbit polyclonal antibody raised against amino acids 655-869 mapping near the C-terminus of Wolframin of human origin.

PRODUCT

Each vial contains 200 μ g IgG in 1.0 ml of PBS with < 0.1% sodium azide and 0.1% gelatin.

APPLICATIONS

Wolframin (H-215) is recommended for detection of Wolframin of mouse, rat and human origin by Western Blotting (starting dilution 1:200, dilution range 1:100-1:1000), immunoprecipitation [1-2 μ g per 100-500 μ g of total protein (1 ml of cell lysate)], immunofluorescence (starting dilution 1:50, dilution range 1:50-1:500) and solid phase ELISA (starting dilution 1:30, dilution range 1:30-1:3000).

Wolframin (H-215) is also recommended for detection of Wolframin in additional species, including equine, canine and bovine.

Suitable for use as control antibody for Wolframin siRNA (h): sc-61804, Wolframin siRNA (m): sc-61805, Wolframin shRNA Plasmid (h): sc-61804-SH, Wolframin shRNA Plasmid (m): sc-61805-SH, Wolframin shRNA (h) Lentiviral Particles: sc-61804-V and Wolframin shRNA (m) Lentiviral Particles: sc-61805-V.

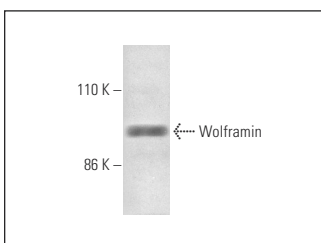
Molecular Weight of Wolframin: 100 kDa.

Positive Controls: HeLa whole cell lysate: sc-2200.

RECOMMENDED SECONDARY REAGENTS

To ensure optimal results, the following support (secondary) reagents are recommended: 1) Western Blotting: use goat anti-rabbit IgG-HRP: sc-2004 (dilution range: 1:2000-1:100,000) or Cruz Marker™ compatible goat anti-rabbit IgG-HRP: sc-2030 (dilution range: 1:2000-1:5000), Cruz Marker™ Molecular Weight Standards: sc-2035, TBS Blotto A Blocking Reagent: sc-2333 and Western Blotting Luminol Reagent: sc-2048. 2) Immunoprecipitation: use Protein A/G PLUS-Agarose: sc-2003 (0.5 ml agarose/2.0 ml). 3) Immunofluorescence: use goat anti-rabbit IgG-FITC: sc-2012 (dilution range: 1:100-1:400) or goat anti-rabbit IgG-TR: sc-2780 (dilution range: 1:100-1:400) with UltraCruz™ Mounting Medium: sc-24941.

DATA



Wolframin (H-215): sc-67180. Western blot analysis of Wolframin expression in HeLa whole cell lysate.

STORAGE

Store at 4° C, **DO NOT FREEZE**. Stable for one year from the date of shipment. Non-hazardous. No MSDS required.

RESEARCH USE

For research use only, not for use in diagnostic procedures.