

# CHMP6 (FL-201): sc-67231

## BACKGROUND

The charged multivesicular body proteins, commonly designated CHMPs, belong to the vacuolar sorting protein family and function as chromatin-modifying proteins. CHMP1-6 are all components of ESCRT (endosomal sorting complex required for transport) I, II or III complexes. These complexes are crucial for sorting endosomal articles into multivesicular bodies (MVBs), as well as required for the formation of these bodies. During HIV-1 infection, the virus uses the ESCRT-III complex to mediate budding and exocytosis of viral proteins. CHMP6, also known as VPS20, interacts with CHMP4 of the ESCRT-III complex. CHMP6 also interacts with SNF8, VPS25 and VPS36 of the ESCRT-II complex, where it regulates cargo sorting by acting as an acceptor for ESCRT-II on endosome membranes.

## CHROMOSOMAL LOCATION

Genetic locus: CHMP6 (human) mapping to 17q25.3; Chmp6 (mouse) mapping to 11 E2.

## SOURCE

CHMP6 (FL-201) is a rabbit polyclonal antibody raised against amino acids 1-201 representing full length CHMP6 of human origin.

## PRODUCT

Each vial contains 200 µg IgG in 1.0 ml of PBS with < 0.1% sodium azide and 0.1% gelatin.

## STORAGE

Store at 4° C, **\*\*DO NOT FREEZE\*\***. Stable for one year from the date of shipment. Non-hazardous. No MSDS required.

## APPLICATIONS

CHMP6 (FL-201) is recommended for detection of CHMP6 of mouse, rat and human origin by Western Blotting (starting dilution 1:200, dilution range 1:100-1:1000), immunoprecipitation [1-2 µg per 100-500 µg of total protein (1 ml of cell lysate)], immunofluorescence (starting dilution 1:50, dilution range 1:50-1:500), immunohistochemistry (including paraffin-embedded sections) (starting dilution 1:50, dilution range 1:50-1:500) and solid phase ELISA (starting dilution 1:30, dilution range 1:30-1:3000).

CHMP6 (FL-201) is also recommended for detection of CHMP6 in additional species, including bovine.

Suitable for use as control antibody for CHMP6 siRNA (h): sc-60376, CHMP6 siRNA (m): sc-60377, CHMP6 shRNA Plasmid (h): sc-60376-SH, CHMP6 shRNA Plasmid (m): sc-60377-SH, CHMP6 shRNA (h) Lentiviral Particles: sc-60376-V and CHMP6 shRNA (m) Lentiviral Particles: sc-60377-V.

Molecular Weight (predicted) of CHMP6: 23 kDa.

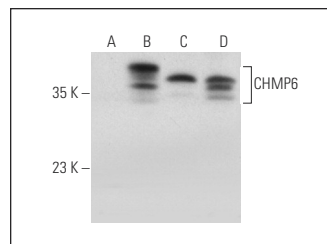
Molecular Weight (observed) of CHMP6: 37 kDa.

Positive Controls: CHMP6 (h): 293T Lysate: sc-371845, Hep G2 cell lysate: sc-2227 or MCF7 whole cell lysate: sc-2206.

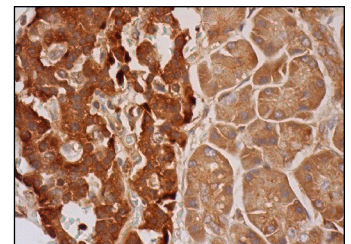
## RECOMMENDED SECONDARY REAGENTS

To ensure optimal results, the following support (secondary) reagents are recommended: 1) Western Blotting: use goat anti-rabbit IgG-HRP: sc-2004 (dilution range: 1:2000-1:100,000) or Cruz Marker™ compatible goat anti-rabbit IgG-HRP: sc-2030 (dilution range: 1:2000-1:5000), Cruz Marker™ Molecular Weight Standards: sc-2035, TBS Blotto A Blocking Reagent: sc-2333 and Western Blotting Luminol Reagent: sc-2048. 2) Immunoprecipitation: use Protein A/G PLUS-Agarose: sc-2003 (0.5 ml agarose/2.0 ml). 3) Immunofluorescence: use goat anti-rabbit IgG-FITC: sc-2012 (dilution range: 1:100-1:400) or goat anti-rabbit IgG-TR: sc-2780 (dilution range: 1:100-1:400) with UltraCruz™ Mounting Medium: sc-24941. 4) Immunohistochemistry: use ImmunoCruz™: sc-2051 or ABC: sc-2018 rabbit IgG Staining Systems.

## DATA



CHMP6 (FL-201): sc-67231. Western blot analysis of CHMP6 expression in non-transfected 293T: sc-117752 (A), human CHMP6 transfected 293T: sc-371845 (B), MCF7 (C) and Hep G2 (D) whole cell lysates.



CHMP6 (FL-201): sc-67231. Immunoperoxidase staining of formalin fixed, paraffin-embedded human pancreas tissue showing cytoplasmic staining of exocrine glandular cells and Islets of Langerhans.

## RESEARCH USE

For research use only, not for use in diagnostic procedures.

## PROTOCOLS

See our web site at [www.scbt.com](http://www.scbt.com) or our catalog for detailed protocols and support products.


 MONOS  
Satisfaction  
Guaranteed

Try **CHMP6 (B-3): sc-398963**, our highly recommended monoclonal alternative to CHMP6 (FL-201).