

GPAA1 (H-311): sc-67235

BACKGROUND

Glycosylphosphatidylinositol (GPI) acts as a membrane anchor for cell surface proteins. Glycosylphosphatidylinositol anchor attachment 1 protein (GPAA1), also designated GPI anchor attachment protein 1 or GAA1 protein homolog, is a membrane protein localized to the endoplasmic reticulum which is involved in GPI-anchor biosynthesis. GPAA1 is crucial for GPI-anchoring of precursor proteins and catalyzes the attachment of GPI to proteins containing a C-terminal GPR attachment signal. GAA1 contains an N-terminal signal sequence, one cAMP- and cGMP-dependent protein kinase phosphorylation site, two potential N-glycosylation sites, one leucine zipper pattern and eight putative transmembrane domains. GPAA1 is ubiquitously expressed and shows higher levels of expression in fetal tissues than in adult tissues.

REFERENCES

- Inoue, N., Ohishi, K., Endo, Y., Fujita, T., Takeda, J. and Kinoshita, T. 1999. Human and mouse GPAA1 (glycosylphosphatidylinositol anchor attachment 1) genes: genomic structures, chromosome loci and the presence of a minor class intron. *Cytogenet. Cell Genet.* 84: 199-205.
- Online Mendelian Inheritance in Man, OMIM™. 2002. Johns Hopkins University, Baltimore, MD. MIM Number: 603048. World Wide Web URL: <http://www.ncbi.nlm.nih.gov/omim/>
- Joh, T., Sasaki, M., Kataoka, H., Tanida, S., Itoh, K., Kondo, Y., Ogasawara, N., Oshima, T., Okada, N., Ohara, H., Sano, H., Nakao, H., Sobue, S. and Itoh, M. 2005. *Helicobacter pylori* eradication decreases the expression of glycosylphosphatidylinositol-anchored complement regulators, decay-accelerating factor and homologous restriction factor 20, in human gastric epithelium. *J. Gastroenterol. Hepatol.* 20: 1344-1351.
- Hutchinson, T.E., Rastogi, A., Prasad, R. and Pereira, B.M. 2005. Phospholipase C sensitive GPI-anchored proteins of goat sperm: possible role in sperm protection. *Anim. Reprod. Sci.* 88: 271-286.
- Wei, Z., Zenewicz, L.A. and Goldfine, H. 2005. *Listeria monocytogenes* phosphatidylinositol-specific phospholipase C has evolved for virulence by greatly reduced activity on GPI anchors. *Proc. Natl. Acad. Sci. USA* 102: 12927-12931.
- Wong, G.W. and Stevens, R.L. 2005. Identification of a subgroup of glycosylphosphatidylinositol-anchored tryptases. *Biochem. Biophys. Res. Commun.* 336: 579-584.

CHROMOSOMAL LOCATION

Genetic locus: GPAA1 (human) mapping to 8q24.3; Gpaa1 (mouse) mapping to 15 D3.

SOURCE

GPAA1 (H-311) is a rabbit polyclonal antibody raised against amino acids 46-356 mapping near the N-terminus of GPAA1 of human origin.

PRODUCT

Each vial contains 200 µg IgG in 1.0 ml of PBS with < 0.1% sodium azide and 0.1% gelatin.

APPLICATIONS

GPAA1 (H-311) is recommended for detection of GPAA1 isoforms 1 and 2 of mouse, rat and human origin by Western Blotting (starting dilution 1:200, dilution range 1:100-1:1000), immunoprecipitation [1-2 µg per 100-500 µg of total protein (1 ml of cell lysate)], immunofluorescence (starting dilution 1:50, dilution range 1:50-1:500) and solid phase ELISA (starting dilution 1:30, dilution range 1:30-1:3000).

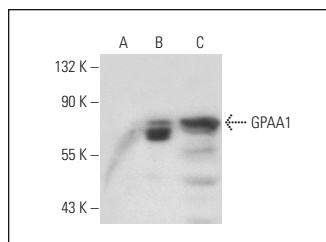
GPAA1 (H-311) is also recommended for detection of GPAA1 isoforms 1 and 2 in additional species, including equine, canine, bovine and porcine.

Suitable for use as control antibody for GPAA1 siRNA (h): sc-60715, GPAA1 siRNA (m): sc-60716, GPAA1 shRNA Plasmid (h): sc-60715-SH, GPAA1 shRNA Plasmid (m): sc-60716-SH, GPAA1 shRNA (h) Lentiviral Particles: sc-60715-V and GPAA1 shRNA (m) Lentiviral Particles: sc-60716-V.

Molecular Weight of GPAA1: 70 kDa.

Positive Controls: GPAA1 (h): 293T Lysate: sc-171677, HeLa whole cell lysate: sc-2200 or Hep G2 cell lysate: sc-2227.

DATA



GPAA1 (H-311): sc-67235. Western blot analysis of GPAA1 expression in non-transfected 293T: sc-117752 (A), human GPAA1 transfected 293T: sc-171677 (B) and HeLa (C) whole cell lysates.

STORAGE

Store at 4° C, **DO NOT FREEZE**. Stable for one year from the date of shipment. Non-hazardous. No MSDS required.

RESEARCH USE

For research use only, not for use in diagnostic procedures.

PROTOCOLS

See our web site at www.scbt.com or our catalog for detailed protocols and support products.

MONOS
Satisfaction
Guaranteed

Try **GPAA1 (F-12): sc-373710** or **GPAA1 (B-10): sc-514538**, our highly recommended monoclonal alternatives to GPAA1 (H-311).