

# p15 (PAF) (FL-111): sc-67279

## BACKGROUND

p15 (PAF), also known as PAF, L5, OEATC1 (overexpressed in anaplastic thyroid carcinoma 1) or NS5ATP9, is a 111 amino acid protein that localizes to both the nucleus and the mitochondria. Highly expressed in colon and thymus with lower expression in liver, ovary, kidney, spleen, placenta and small intestine, p15 (PAF) interacts with the nuclear antigen PCNA and, through this interaction, is thought to protect cells from UV-induced cell death. The association of p15 (PAF) and PCNA is enhanced by UV treatment and is facilitated by the binding of ING1, a tumor suppressor that can induce apoptosis. Due to its ability to bind the apoptotic factor ING1 and subsequently decrease the rate of cell death, high levels of p15 (PAF) are found in several types of tumors, including esophageal and pancreatic cancer, suggesting an important role for p15 (PAF) in tumor progression.

## REFERENCES

1. Yu, P., et al. 2001. p15(PAF), a novel PCNA associated factor with increased expression in tumor tissues. *Oncogene* 20: 484-489.
2. Mizutani, K., et al. 2005. Overexpressed in anaplastic thyroid carcinoma-1 (OEATC-1) as a novel gene responsible for anaplastic thyroid carcinoma. *Cancer* 103: 1785-1790.

## CHROMOSOMAL LOCATION

Genetic locus: KIAA0101 (human) mapping to 15q22.31; 2810417H13Rik (mouse) mapping to 9 C.

## SOURCE

p15 (PAF) (FL-111) is a rabbit polyclonal antibody raised against amino acids 1-111 representing full length p15 (PAF) of human origin.

## PRODUCT

Each vial contains 200 µg IgG in 1.0 ml of PBS with < 0.1% sodium azide and 0.1% gelatin.

## APPLICATIONS

p15 (PAF) (FL-111) is recommended for detection of p15 (PAF) of mouse, rat and human origin by Western Blotting (starting dilution 1:200, dilution range 1:100-1:1000), immunoprecipitation [1-2 µg per 100-500 µg of total protein (1 ml of cell lysate)], immunofluorescence (starting dilution 1:50, dilution range 1:50-1:500) and solid phase ELISA (starting dilution 1:30, dilution range 1:30-1:3000).

p15 (PAF) (FL-111) is also recommended for detection of p15 (PAF) in additional species, including equine, bovine and porcine.

Suitable for use as control antibody for p15 (PAF) siRNA (h): sc-62735, p15 (PAF) siRNA (m): sc-62736, p15 (PAF) shRNA Plasmid (h): sc-62735-SH, p15 (PAF) shRNA Plasmid (m): sc-62736-SH, p15 (PAF) shRNA (h) Lentiviral Particles: sc-62735-V and p15 (PAF) shRNA (m) Lentiviral Particles: sc-62736-V.

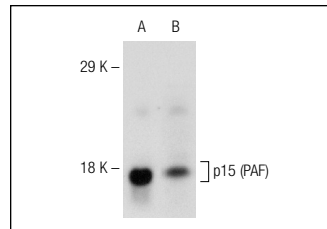
Molecular Weight of p15: 12 kDa.

Positive Controls: KNRK nuclear extract: sc-2141, U266 whole cell lysate: sc-364800 or M1 whole cell lysate: sc-364782.

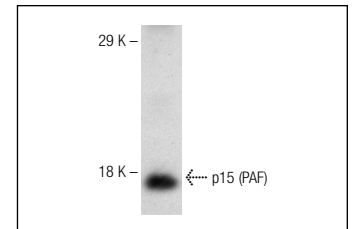
## RECOMMENDED SECONDARY REAGENTS

To ensure optimal results, the following support (secondary) reagents are recommended: 1) Western Blotting: use goat anti-rabbit IgG-HRP: sc-2004 (dilution range: 1:2000-1:100,000) or Cruz Marker™ compatible goat anti-rabbit IgG-HRP: sc-2030 (dilution range: 1:2000-1:5000), Cruz Marker™ Molecular Weight Standards: sc-2035, TBS Blotto A Blocking Reagent: sc-2333 and Western Blotting Luminol Reagent: sc-2048. 2) Immunoprecipitation: use Protein A/G PLUS-Agarose: sc-2003 (0.5 ml agarose/2.0 ml). 3) Immunofluorescence: use goat anti-rabbit IgG-FITC: sc-2012 (dilution range: 1:100-1:400) or goat anti-rabbit IgG-TR: sc-2780 (dilution range: 1:100-1:400) with UltraCruz™ Mounting Medium: sc-24941.

## DATA



p15 (PAF) (FL-111): sc-67279. Western blot analysis of p15 (PAF) expression in KNRK nuclear extract (A) and M1 whole cell lysate (B).



p15 (PAF) (FL-111): sc-67279. Western blot analysis of p15 (PAF) expression in U266 whole cell lysate.

## SELECT PRODUCT CITATIONS

1. Wang, Q., et al. 2013. NS5ATP9 contributes to inhibition of cell proliferation by Hepatitis C virus (HCV) nonstructural protein 5A (NS5A) via MEK/extracellular signal regulated kinase (ERK) pathway. *Int. J. Mol. Sci.* 14: 10539-105351.

## STORAGE

Store at 4° C, \*\*DO NOT FREEZE\*\*. Stable for one year from the date of shipment. Non-hazardous. No MSDS required.

## RESEARCH USE

For research use only, not for use in diagnostic procedures.

## PROTOCOLS

See our web site at [www.scbt.com](http://www.scbt.com) or our catalog for detailed protocols and support products.


 MONOS  
Satisfaction  
Guaranteed

Try **p15 (PAF) (G-11): sc-390515** or **p15 (D-12): sc-271791**, our highly recommended monoclonal alternatives to p15 (PAF) (FL-111).