

# CTAGE2/5 (H-300): sc-67290

## BACKGROUND

Cutaneous T cell lymphomas (CTCL) represent a group of malignancies that originate from CD4-T lymphocytes and manifest on the skin. CTCL is a general term for several neoplasms including mycosis fungoides, T cell leukemia/lymphoma and pagetoid reticulosis, all of which are very difficult to treat in the advanced stages. CTAGE2 (cutaneous T cell lymphoma associated-antigen 2) is a member of the cancer/testis antigen family of proteins (CTAGE) that, under normal conditions, are found primarily in the testis with little or no expression in other parts of the body. Another member of the CTAGE family, namely CTAGE5 (also known as MEA11, MEA6, MGEA11 or MGEA6), is a tumor associated antigen that is found in tumors of various origins, including cutaneous T cell lymphomas. Both CTAGE2 and CTAGE5 are expressed as multiple isoforms due to alternative splicing events.

## REFERENCES

1. Eichmüller, S., Usener, D., Dummer, R., Stein, A., Thiel, D. and Schadendorf, D. 2001. Serological detection of cutaneous T cell lymphoma-associated antigens. *Proc. Natl. Acad. Sci. USA* 98: 629-634.
2. Comtesse, N., Reus, K. and Meese, E. 2001. The MGEA6 multigene family has an active locus on 14q and at least nine pseudogenes on different chromosomes. *Genomics* 75: 43-48.
3. Comtesse, N., Niedermayer, I., Glass, B., Heckel, D., Maldener, E., Nastainczyk, W., Feiden, W. and Meese, E. 2002. MGEA6 is tumor-specific overexpressed and frequently recognized by patient-serum antibodies. *Oncogene* 21: 239-247.
4. Eichmüller, S. 2002. Towards defining specific antigens for cutaneous lymphomas. *Onkologie* 25: 448-454.
5. Eichmüller, S., Usener, D., Thiel, D. and Schadendorf, D. 2003. Tumor-specific antigens in cutaneous T cell lymphoma: expression and sero-reactivity. *Int. J. Cancer* 104: 482-487.
6. Usener, D., Schadendorf, D., Koch, J., Dübel, S. and Eichmüller, S. 2003. CTAGE: a cutaneous T cell lymphoma associated antigen family with tumor-specific splicing. *J. Invest. Dermatol.* 121: 198-206.
7. Atanackovic, D., Blum, I., Cao, Y., Wenzel, S., Bartels, K., Faltz, C., Hossfeld, D.K., Hegewisch-Becker, S., Bokemeyer, C. and Leuwer, R. 2006. Expression of cancer-testis antigens as possible targets for antigen-specific immunotherapy in head and neck squamous cell carcinoma. *Cancer Biol. Ther.* 5: 1218-1225.
8. Guinn, B.A., Gilkes, A.F., Mufti, G.J., Burnett, A.K. and Mills, K.I. 2006. The tumour antigens RAGE-1 and MGEA6 are expressed more frequently in the less lineage restricted subgroups of presentation acute myeloid leukaemia. *Br. J. Haematol.* 134: 238-239.

## CHROMOSOMAL LOCATION

Genetic locus: CTAGE1 (human) mapping to 18p11.2, CTAGE5 (human) mapping to 14q13.3.

## RESEARCH USE

For research use only, not for use in diagnostic procedures.

## SOURCE

CTAGE2/5 (H-300) is a rabbit polyclonal antibody raised against amino acids 141-440 mapping within an internal region of CTAGE2 of human origin.

## PRODUCT

Each vial contains 200 µg IgG in 1.0 ml of PBS with < 0.1% sodium azide and 0.1% gelatin.

## APPLICATIONS

CTAGE2/5 (H-300) is recommended for detection of CTAGE2 and CTAGE5 of human origin by Western Blotting (starting dilution 1:200, dilution range 1:100-1:1000), immunoprecipitation [1-2 µg per 100-500 µg of total protein (1 ml of cell lysate)], immunofluorescence (starting dilution 1:50, dilution range 1:50-1:500) and solid phase ELISA (starting dilution 1:30, dilution range 1:30-1:3000).

Molecular Weight of CTAGE2: 86 kDa.

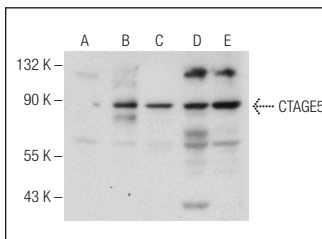
Molecular Weight of CTAGE5: 91 kDa.

Positive Controls: CTAGE5 (h): 293T Lysate: sc-372590, HeLa whole cell lysate: sc-2200 or Jurkat whole cell lysate: sc-2204.

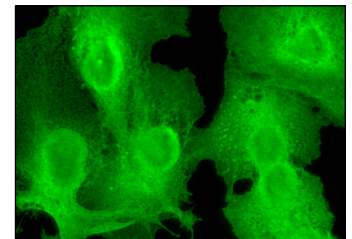
## RECOMMENDED SECONDARY REAGENTS

To ensure optimal results, the following support (secondary) reagents are recommended: 1) Western Blotting: use goat anti-rabbit IgG-HRP: sc-2004 (dilution range: 1:2000-1:100,000) or Cruz Marker™ compatible goat anti-rabbit IgG-HRP: sc-2030 (dilution range: 1:2000-1:5000), Cruz Marker™ Molecular Weight Standards: sc-2035, TBS Blotto A Blocking Reagent: sc-2333 and Western Blotting Luminol Reagent: sc-2048. 2) Immunoprecipitation: use Protein A/G PLUS-Agarose: sc-2003 (0.5 ml agarose/2.0 ml). 3) Immunofluorescence: use goat anti-rabbit IgG-FITC: sc-2012 (dilution range: 1:100-1:400) or goat anti-rabbit IgG-TR: sc-2780 (dilution range: 1:100-1:400) with UltraCruz™ Mounting Medium: sc-24941.

## DATA



CTAGE2/5 (H-300): sc-67290. Western blot analysis of CTAGE5 expression in non-transfected 293T: sc-117752 (A), human CTAGE5 transfected 293T: sc-372590 (B), HeLa (C), Jurkat (D) and HuT 78 (E) whole cell lysates.



CTAGE2/5 (H-300): sc-67290. Immunofluorescence staining of formalin-fixed HepG2 cells showing cytoplasmic, membrane and nuclear localization.

## STORAGE

Store at 4° C, \*\*DO NOT FREEZE\*\*. Stable for one year from the date of shipment. Non-hazardous. No MSDS required.