

Anillin (H-300): sc-67327

BACKGROUND

Anillin, also known as scraps homolog, is an evolutionarily conserved Actin binding protein required for cytokinesis that was first identified in *Drosophila melanogaster*. Anillin is a ubiquitously expressed protein with highest expression levels in the central nervous system. It is predominantly found in the nucleus, and it localizes to the cleavage furrow during cytokinesis, forming a ring with the help of Rac GTPase. During cytokinesis, Anillin interacts with CD2AP and functions to concentrate Rho A and maintain the localization of active Myosin. In Anillin knockout cells the cleavage furrow fails to complete ingression. Anillin expression levels fluctuate with the cell cycle, peaking in mitosis. Before the cell exits into G₁, Anillin associates with E-cadherin and is ubiquitinated by the anaphase-promoting complex/cyclosome (APC/C). APC/C recognizes the D-box domain at the N-terminal region of Anillin. Anillin is commonly overexpressed in tumors and may serve as a potential biomarker.

REFERENCES

- Hall, P.A., Todd, C.B., Hyland, P.L., McDade, S.S., Grabsch, H., Dattani, M., Hillan, K.J. and Russell, S.E. 2005. The septin-binding protein Anillin is overexpressed in diverse human tumors. *Clin. Cancer Res.* 11: 6780-6786.
- Mollinari, C., Kleman, J.P., Saoudi, Y., Jablonski, S.A., Perard, J., Yen, T.J. and Margolis, R.L. 2005. Ablation of PRC1 by small interfering RNA demonstrates that cytokinetic abscission requires a central spindle bundle in mammalian cells, whereas completion of furrowing does not. *Mol. Biol. Cell* 16: 1043-1055.
- Monzo, P., Gauthier, N.C., Keslair, F., Loubat, A., Field, C.M., Le Marchand-Brustel, Y. and Cormont, M. 2005. Clues to CD2-associated protein involvement in cytokinesis. *Mol. Biol. Cell* 16: 2891-2902.
- Suzuki, C., Daigo, Y., Ishikawa, N., Kato, T., Hayama, S., Ito, T., Tsuchiya, E. and Nakamura, Y. 2005. ANLN plays a critical role in human lung carcinogenesis through the activation of Rho A and by involvement in the phosphoinositide 3-kinase/Akt pathway. *Cancer Res.* 65: 11314-11325.
- Zhao, W.M. and Fang, G. 2005. MgcRacGAP controls the assembly of the contractile ring and the initiation of cytokinesis. *Proc. Natl. Acad. Sci. USA* 102: 13158-13163.
- Zhao, W.M. and Fang, G. 2005. Anillin is a substrate of anaphase-promoting complex/cyclosome (APC/C) that controls spatial contractility of Myosin during late cytokinesis. *J. Biol. Chem.* 280: 33516-33524.
- Engel, F.B., Schebesta, M. and Keating, M.T. 2006. Anillin localization defect in cardiomyocyte binucleation. *J. Mol. Cell. Cardiol.* 41: 601-612.
- Gatt, M.K. and Glover, D.M. 2006. The *Drosophila* phosphatidylinositol transfer protein encoded by vibrator is essential to maintain cleavage-furrow ingression in cytokinesis. *J. Cell Sci.* 119: 2225-2235.

CHROMOSOMAL LOCATION

Genetic locus: ANLN (human) mapping to 7p14.2; Anln (mouse) mapping to 9 A3.

RESEARCH USE

For research use only, not for use in diagnostic procedures.

SOURCE

Anillin (H-300) is a rabbit polyclonal antibody raised against amino acids 641-940 mapping near the C-terminus of Anillin of human origin.

PRODUCT

Each vial contains 200 µg IgG in 1.0 ml of PBS with < 0.1% sodium azide and 0.1% gelatin.

APPLICATIONS

Anillin (H-300) is recommended for detection of Anillin of mouse, rat and human origin by Western Blotting (starting dilution 1:200, dilution range 1:100-1:1000), immunoprecipitation [1-2 µg per 100-500 µg of total protein (1 ml of cell lysate)], immunofluorescence (starting dilution 1:50, dilution range 1:50-1:500), immunohistochemistry (including paraffin-embedded sections) (starting dilution 1:50, dilution range 1:50-1:500) and solid phase ELISA (starting dilution 1:30, dilution range 1:30-1:3000).

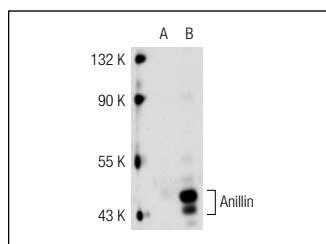
Anillin (H-300) is also recommended for detection of Anillin in additional species, including equine, canine, bovine and porcine.

Suitable for use as control antibody for Anillin siRNA (h): sc-61970, Anillin siRNA (m): sc-61971, Anillin shRNA Plasmid (h): sc-61970-SH, Anillin shRNA Plasmid (m): sc-61971-SH, Anillin shRNA (h) Lentiviral Particles: sc-61970-V and Anillin shRNA (m) Lentiviral Particles: sc-61971-V.

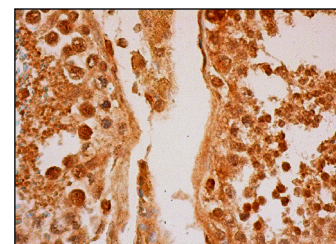
Molecular Weight of Anillin: 190 kDa.

Positive Controls: Anillin (h): 293T Lysate: sc-113842.

DATA



Anillin (H-300): sc-67327. Western blot analysis of truncated Anillin expression in non-transfected: sc-117752 (A) and truncated human Anillin transfected: sc-113842 (B) 293T whole cell lysates.



Anillin (H-300): sc-67327. Immunoperoxidase staining of formalin fixed, paraffin-embedded human testis tissue showing nuclear and cytoplasmic staining of cells in seminiferous ducts and Leydig cells.

STORAGE

Store at 4° C, **DO NOT FREEZE**. Stable for one year from the date of shipment. Non-hazardous. No MSDS required.



Try **Anillin (B-10): sc-271814** or **Anillin (A-2): sc-365181**, our highly recommended monoclonal alternatives to Anillin (H-300).