

20S Proteasome $\alpha 6$ (H-135): sc-67343

BACKGROUND

The proteasome represents a large protein complex that exists inside all eukaryotes and archaea, and in some bacteria. The main function of proteasomes is to degrade unnecessary or damaged proteins by proteolysis. The most common form of the proteasome, known as the 26S Proteasome, contains one 20S Proteasome core particle structure and two 19S regulatory caps. The 20S Proteasome core is hollow and forms an enclosed cavity, where proteins are degraded, as well as openings at the two ends to allow the target protein to enter. The 20S Proteasome core particle contains many subunits, depending on the organism. All of the subunits fall into one of two types: α subunits, which are structural, serve as docking domains for the regulatory particles and exterior gates blocking unregulated access to the interior cavity; or β subunits, which are predominantly catalytic. The outer two rings in the proteasome consist of seven α subunits each, and the inner two rings each consist of seven β subunits.

CHROMOSOMAL LOCATION

Genetic locus: PSMA6 (human) mapping to 14q13.2; PsmA6 (mouse) mapping to 12 C1.

SOURCE

20S Proteasome $\alpha 6$ (H-135) is a rabbit polyclonal antibody raised against amino acids 46-180 mapping near the N-terminus of 20S Proteasome $\alpha 6$ of human origin.

PRODUCT

Each vial contains 200 μ g IgG in 1.0 ml of PBS with < 0.1% sodium azide and 0.1% gelatin.

RESEARCH USE

For research use only, not for use in diagnostic procedures.

APPLICATIONS

20S Proteasome $\alpha 6$ (H-135) is recommended for detection of 20S Proteasome $\alpha 6$ of mouse, rat and human origin by Western Blotting (starting dilution 1:200, dilution range 1:100-1:1000), immunoprecipitation [1-2 μ g per 100-500 μ g of total protein (1 ml of cell lysate)], immunofluorescence (starting dilution 1:50, dilution range 1:50-1:500) and solid phase ELISA (starting dilution 1:30, dilution range 1:30-1:3000).

20S Proteasome $\alpha 6$ (H-135) is also recommended for detection of 20S Proteasome $\alpha 6$ in additional species, including equine, canine, bovine, porcine and avian.

Suitable for use as control antibody for 20S Proteasome $\alpha 6$ siRNA (h): sc-62884, 20S Proteasome $\alpha 6$ siRNA (m): sc-62885, 20S Proteasome $\alpha 6$ shRNA Plasmid (h): sc-62884-SH, 20S Proteasome $\alpha 6$ shRNA Plasmid (m): sc-62885-SH, 20S Proteasome $\alpha 6$ shRNA (h) Lentiviral Particles: sc-62884-V and 20S Proteasome $\alpha 6$ shRNA (m) Lentiviral Particles: sc-62885-V.

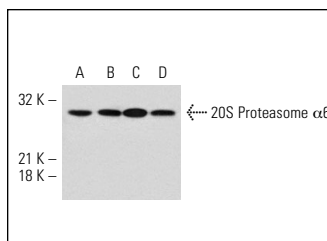
Molecular Weight of 20S Proteasome $\alpha 6$: 27 kDa.

Positive Controls: HeLa nuclear extract: sc-2120, MCF7 nuclear extract: sc-2149 or Hep G2 cell lysate: sc-2227.

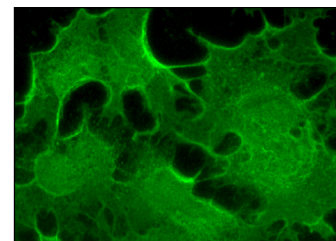
RECOMMENDED SECONDARY REAGENTS

To ensure optimal results, the following support (secondary) reagents are recommended: 1) Western Blotting: use goat anti-rabbit IgG-HRP: sc-2004 (dilution range: 1:2000-1:100,000) or Cruz Marker™ compatible goat anti-rabbit IgG-HRP: sc-2030 (dilution range: 1:2000-1:5000), Cruz Marker™ Molecular Weight Standards: sc-2035, TBS Blotto A Blocking Reagent: sc-2333 and Western Blotting Luminol Reagent: sc-2048. 2) Immunoprecipitation: use Protein A/G PLUS-Agarose: sc-2003 (0.5 ml agarose/2.0 ml). 3) Immunofluorescence: use goat anti-rabbit IgG-FITC: sc-2012 (dilution range: 1:100-1:400) or goat anti-rabbit IgG-TR: sc-2780 (dilution range: 1:100-1:400) with UltraCruz™ Mounting Medium: sc-24941.

DATA



20S Proteasome $\alpha 6$ (H-135): sc-67343. Western blot analysis of 20S Proteasome $\alpha 6$ expression in HeLa (A), Hep G2 (B) and MCF7 (C) nuclear extracts and Hep G2 (D) whole cell lysate.



20S Proteasome $\alpha 6$ (H-135): sc-67343. Immunofluorescence staining of formalin-fixed Hep G2 cells showing cytoplasmic and nuclear localization.

SELECT PRODUCT CITATIONS

1. D'Amours, O., et al. 2010. Proteomic comparison of detergent-extracted sperm proteins from bulls with different fertility indexes. *Reproduction* 139: 545-556.

STORAGE

Store at 4° C, **DO NOT FREEZE**. Stable for one year from the date of shipment. Non-hazardous. No MSDS required.

PROTOCOLS

See our web site at www.scbt.com or our catalog for detailed protocols and support products.

MONOS
Satisfaction
Guaranteed

Try **20S Proteasome $\alpha 6$ (C-5): sc-271187** or **20S Proteasome $\alpha 6$ (MCP20): sc-58416**, our highly recommended monoclonal alternatives to 20S Proteasome $\alpha 6$ (H-135).