

ZPI (H-137): sc-67400



The Power to Question

BACKGROUND

ZPI, also known as SERPINA10 (serpin peptidase inhibitor, clade A (α -1 anti-proteinase, antitrypsin), member 10) or PZI, is a 444 amino acid secreted protein that functions as a Protein Z-dependent protease inhibitor. Expressed by the liver, ZPI is secreted into the plasma where, in the presence of calcium, Protein Z and phospholipids, it inhibits the activated pro-coagulation factors X and XI (Factor X and Factor XI). This inhibition helps properly regulate intravenous blood clotting. ZPI, a member of the serpin protein family, contains five potential N-linked glycosylation sites and a tyrosine at position 387 which, when disrupted, renders ZPI inactive. Defects in the gene encoding ZPI may increase susceptibility to venous thrombosis, the formation of blood clots within a vein.

REFERENCES

- Marin, S. 1967. Bronchial perforation in tuberculosis of the lymph nodes. *Med. Glas.* 21: 62-66.
- Han, X., Fiehler, R. and Broze, G.J. 2000. Characterization of the Protein Z-dependent protease inhibitor. *Blood* 96: 3049-3055.
- Broze, G.J. 2001. Protein Z-dependent regulation of coagulation. *Thromb. Haemost.* 86: 8-13.
- Online Mendelian Inheritance in Man, OMIM™. 2002. Johns Hopkins University, Baltimore, MD. MIM Number: 605271. World Wide Web URL: <http://www.ncbi.nlm.nih.gov/omim/>
- Heeb, M.J., Cabral, K.M. and Ruan, L. 2005. Downregulation of Factor IXa in the Factor Xase complex by Protein Z-dependent protease inhibitor. *J. Biol. Chem.* 280: 33819-33825.
- Al-Shanqeeti, A., van Hylckama Vlieg, A., Berntorp, E., Rosendaal, F.R. and Broze, G.J. 2005. Protein Z and Protein Z-dependent protease inhibitor. Determinants of levels and risk of venous thrombosis. *Thromb. Haemost.* 93: 411-413.
- Corral, J., González-Conejero, R., Soria, J.M., González-Porrás, J.R., Pérez-Ceballos, E., Lecumberri, R., Roldán, V., Souto, J.C., Miñano, A., Hernández-Espinosa, D., Alberca, I., Fontcuberta, J. and Vicente, V. 2006. A nonsense polymorphism in the Protein Z-dependent protease inhibitor increases the risk for venous thrombosis. *Blood* 108: 177-183.
- Vasse, M., Denoyelle, C., Corbière, C., Litzler, P.Y., Legrand, E. and Vannier, J.P. 2006. Human endothelial cells synthesize Protein Z, but not the Protein Z dependent inhibitor. *Thromb. Haemost.* 95: 519-523.
- Razzari, C., Martinelli, I., Bucciarelli, P., Viscardi, Y. and Biguzzi, E. 2006. Polymorphisms of the Protein Z-dependent protease inhibitor (ZPI) gene and the risk of venous thromboembolism. *Thromb. Haemost.* 95: 909-910.

CHROMOSOMAL LOCATION

Genetic locus: SERPINA10 (human) mapping to 14q32.13.

SOURCE

ZPI (H-137) is a rabbit polyclonal antibody raised against amino acids 101-237 mapping within an internal region of ZPI of human origin.

PRODUCT

Each vial contains 200 μ g IgG in 1.0 ml of PBS with < 0.1% sodium azide and 0.1% gelatin.

APPLICATIONS

ZPI (H-137) is recommended for detection of ZPI of human and, to a lesser extent, rat origin by Western Blotting (starting dilution 1:200, dilution range 1:100-1:1000), immunoprecipitation [1-2 μ g per 100-500 μ g of total protein (1 ml of cell lysate)], immunofluorescence (starting dilution 1:50, dilution range 1:50-1:500) and solid phase ELISA (starting dilution 1:30, dilution range 1:30-1:3000).

Suitable for use as control antibody for ZPI siRNA (h): sc-63257, ZPI shRNA Plasmid (h): sc-63257-SH and ZPI shRNA (h) Lentiviral Particles: sc-63257-V.

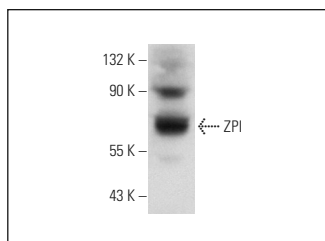
Molecular Weight of ZPI: 72 kDa.

Positive Controls: Hep G2 cell lysate: sc-2227.

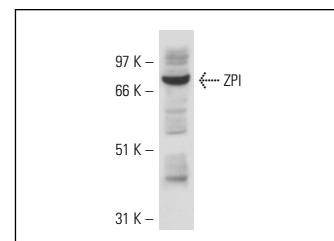
RECOMMENDED SECONDARY REAGENTS

To ensure optimal results, the following support (secondary) reagents are recommended: 1) Western Blotting: use goat anti-rabbit IgG-HRP: sc-2004 (dilution range: 1:2000-1:100,000) or Cruz Marker™ compatible goat anti-rabbit IgG-HRP: sc-2030 (dilution range: 1:2000-1:5000), Cruz Marker™ Molecular Weight Standards: sc-2035, TBS Blotto A Blocking Reagent: sc-2333 and Western Blotting Luminol Reagent: sc-2048. 2) Immunoprecipitation: use Protein A/G PLUS-Agarose: sc-2003 (0.5 ml agarose/2.0 ml). 3) Immunofluorescence: use goat anti-rabbit IgG-FITC: sc-2012 (dilution range: 1:100-1:400) or goat anti-rabbit IgG-TR: sc-2780 (dilution range: 1:100-1:400) with UltraCruz™ Mounting Medium: sc-24941.

DATA



ZPI (H-137): sc-67400. Western blot analysis of ZPI expression in Hep G2 whole cell lysate.



ZPI (H-137): sc-67400. Western blot analysis of ZPI expression in rat liver tissue extract.

STORAGE

Store at 4° C, **DO NOT FREEZE**. Stable for one year from the date of shipment. Non-hazardous. No MSDS required.

RESEARCH USE

For research use only, not for use in diagnostic procedures.

PROTOCOLS

See our web site at www.scbt.com or our catalog for detailed protocols and support products.