

# SRMS (M-130): sc-67405

## BACKGROUND

Protein kinases comprise a large group of encoded factors that regulate cellular processes by catalyzing the transfer of a phosphate group to a hydroxyl acceptor in serine, threonine or tyrosine residues. SRMS (Src-related kinase lacking C-terminal regulatory tyrosine and N-terminal myristylation sites), also known as SRM, is a 488 amino acid nonreceptor tyrosine-protein kinase that may play a role in the differentiation/proliferation of keratinocytes. SRMS consists of one Src homology 3 (SH3) domain, one Src homology 2 (SH2) domain and one protein kinase domain. The SH3 region is a small protein domain present in a large group of proteins, generally existing in association with catalytic domains. SH3 domains are also often accompanied by SH2 domains which bind to tyrosine-phosphorylated regions of target proteins, frequently linking activated growth factors to putative signal transduction proteins. Deletion or mutation of SH3 domains generally activate the transforming potential of nonreceptor tyrosine kinases, suggesting that SH3 mediates negative regulation of an intrinsic transforming activity.

## REFERENCES

- Ullrich, A. and Schlessinger, J. 1990. Signal transduction by receptors with tyrosine kinase activity. *Cell* 61: 203-212.
- Koch, C.A., Anderson, D., Moran, M.F., Ellis, C., and Pawson, T. 1991. SH2 and SH3 domains: elements that control interactions of cytoplasmic signaling proteins. *Science* 252: 669-674.
- Kohmura, N., Yagi, T., Tomooka, Y., Oyanagi, M., Kominami, R., Takeda, N., Chiba, J., Ikawa, Y. and Aizawa, S. 1994. A novel nonreceptor tyrosine kinase, SRM: cloning and targeted disruption. *Mol. Cell. Biol.* 14: 6915-6925.
- Hunter, T. 1995. Protein kinases and phosphatases: the yin and yang of protein phosphorylation and signaling. *Cell* 80: 225-236.
- Vasioukhin, V., et al. 1997. A role for the epithelial-cell-specific tyrosine kinase *Sik* during keratinocyte differentiation. *Proc. Natl. Acad. Sci. USA* 94: 14477-14482.
- Haegerbarth, A., Bie, W., Yang, R., Crawford, S.E., Vasioukhin, V., Fuchs, E. and Tyner, A.L. 2006. Protein tyrosine kinase 6 negatively regulates growth and promotes enterocyte differentiation in the small intestine. *Mol. Cell. Biol.* 26: 4949-4957.
- Lee, S.J., Liu, J., Westcott, A.M., Vieth, J.A., DeRaedt, S.J., Yang, S., Joe, B. and Cicila, G.T. 2006. Substitution mapping in Dahl rats identifies two distinct blood pressure quantitative trait loci within 1.12- and 1.25-mb intervals on chromosome 3. *Genetics* 174: 2203-2213.
- Chang, Y.M., Kung, H.J. and Evans, C.P. 2007. Nonreceptor tyrosine kinases in prostate cancer. *Neoplasia* 9: 90-100.

## CHROMOSOMAL LOCATION

Genetic locus: SRMS (human) mapping to 20; *Srms* (mouse) mapping to 2 H4.

## SOURCE

SRMS (M-130) is a rabbit polyclonal antibody raised against amino acids 1-130 mapping at the N-terminus of SRMS of mouse origin.

## PRODUCT

Each vial contains 200 µg IgG in 1.0 ml of PBS with < 0.1% sodium azide and 0.1% gelatin.

## APPLICATIONS

SRMS (M-130) is recommended for detection of SRMS of mouse and rat origin by Western Blotting (starting dilution 1:200, dilution range 1:100-1:1000), immunoprecipitation [1–2 µg per 100–500 µg of total protein (1 ml of cell lysate)], immunofluorescence (starting dilution 1:50, dilution range 1:50-1:500) and solid phase ELISA (starting dilution 1:30, dilution range 1:30-1:3000).

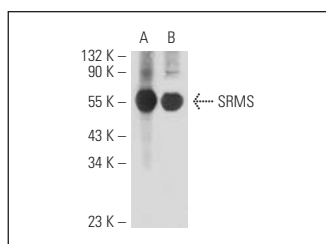
Suitable for use as control antibody for SRMS siRNA (m): sc-63067.

Molecular Weight of SRMS: 54 kDa.

## RECOMMENDED SECONDARY REAGENTS

To ensure optimal results, the following support (secondary) reagents are recommended: 1) Western Blotting: use goat anti-rabbit IgG-HRP: sc-2004 (dilution range: 1:2000-1:100,000) or Cruz Marker™ compatible goat anti-rabbit IgG-HRP: sc-2030 (dilution range: 1:2000-1:5000), Cruz Marker™ Molecular Weight Standards: sc-2035, TBS Blotto A Blocking Reagent: sc-2333 and Western Blotting Luminol Reagent: sc-2048. 2) Immunoprecipitation: use Protein A/G PLUS-Agarose: sc-2003 (0.5 ml agarose/2.0 ml). 3) Immunofluorescence: use goat anti-rabbit IgG-FITC: sc-2012 (dilution range: 1:100-1:400) or goat anti-rabbit IgG-TR: sc-2780 (dilution range: 1:100-1:400) with UltraCruz™ Mounting Medium: sc-24941.

## DATA



SRMS (M-130): sc-67405. Western blot analysis of SRMS expression in mouse kidney (A) and rat spleen (B) tissue extracts.

## STORAGE

Store at 4° C, \*\*DO NOT FREEZE\*\*. Stable for one year from the date of shipment. Non-hazardous. No MSDS required.

## RESEARCH USE

For research use only, not for use in diagnostic procedures.

## PROTOCOLS

See our web site at [www.scbt.com](http://www.scbt.com) or our catalog for detailed protocols and support products.