

α -2 antiplasmin (M-20): sc-67509

BACKGROUND

The serine proteinase inhibitors (serpins) comprise a superfamily of proteins with a diverse set of functions, including the control of blood coagulation, complement activation, programmed cell death and development. Serpins are secreted glycoproteins that contain a stretch of peptide that mimics a true substrate for a corresponding serine protease. α -2 antiplasmin (also referred to as α -2-AP or α -2-plasmin inhibitor) is a member of the serpin family that inhibits plasmin. It is the most potent and rapidly acting of the plasmin inhibitors and is thought to play a key role in the regulation of fibrinolysis and degradation of various other proteins. α -2 antiplasmin interferes with the binding of plasminogen to Fibrin because lysine residues in its carboxy-terminal region compete with those in Fibrin. As plasmin degrades blood clots, impaired activity of α -2 antiplasmin leads to a bleeding tendency.

REFERENCES

- Lijnen, H.R., Van Hoef, B., Dewerchin, M. and Collen, D. 2000. α -2 antiplasmin gene deficiency in mice does not affect neointima formation after vascular injury. *Arterioscler. Thromb. Vasc. Biol.* 20: 1488-1492.
- Lee, K.N., Lee, C.S., Tae, W.C., Jackson, K.W., Christiansen, V.J. and McKee, P.A. 2001. Crosslinking of α -2 antiplasmin to Fibrin. *Ann. N.Y. Acad. Sci.* 936: 335-339.
- Lijnen, H.R., Van Hoef, B. and Collen, D. 2001. Inactivation of the serpin α -2 antiplasmin by stromelysin-1. *Biochim. Biophys. Acta* 1547: 206-213.
- Ries, M., Easton, R.L., Longstaff, C., Zenker, M., Morris, H.R., Dell, A. and Gaffney, P.J. 2002. Differences between neonates and adults in carbohydrate sequences and reaction kinetics of plasmin and α -2 antiplasmin. *Thromb. Res.* 105: 247-256.
- Matsuno, H., Ishisaki, A., Nakajima, K., Okada, K., Ueshima, S., Matsuo, O. and Kozawa, O. 2003. Lack of α -2 antiplasmin promotes re-endothelialization via over-release of VEGF after vascular injury in mice. *Blood* 102: 3621-3628.
- Online Mendelian Inheritance in Man, OMIM™. 2004. Johns Hopkins University, Baltimore, MD. MIM Number: 262850. World Wide Web URL: <http://www.ncbi.nlm.nih.gov/omim/>
- Hrynenko, T.V., Zadorozhna, M.B., Platonova, T.M. and Volkov, H.L. 2006. Inhibition with Fibrin, DDE-complex, and D-dimer using α -2-antiplasmin. *Ukr. Biokhim. Zh.* 77: 45-51.
- Kozek, E., Katra, B., Malecki, M. and Sieradzki, J. 2007. Visceral obesity and hemostatic profile in patients with type 2 diabetes: the effect of gender and metabolic compensation. *Rev. Diabet. Stud.* 1: 122-128.

CHROMOSOMAL LOCATION

Genetic locus: Serpinf2 (mouse) mapping to 11 B5.

SOURCE

α -2 antiplasmin (M-20) is an affinity purified goat polyclonal antibody raised against a peptide mapping near the C-terminus of α -2 antiplasmin of mouse origin.

PRODUCT

Each vial contains 200 μ g IgG in 1.0 ml of PBS with < 0.1% sodium azide and 0.1% gelatin.

Blocking peptide available for competition studies, sc-67509 P, (100 μ g peptide in 0.5 ml PBS containing < 0.1% sodium azide and 0.2% BSA).

APPLICATIONS

α -2 antiplasmin (M-20) is recommended for detection of α -2 antiplasmin of mouse and rat origin by Western Blotting (starting dilution 1:200, dilution range 1:100-1:1000), immunofluorescence (starting dilution 1:50, dilution range 1:50-1:500) and solid phase ELISA (starting dilution 1:30, dilution range 1:30-1:3000).

Suitable for use as control antibody for α -2 antiplasmin siRNA (m): sc-61925.

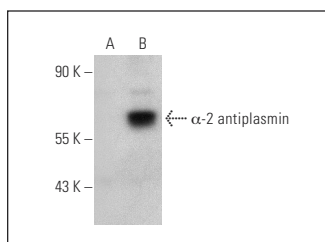
Molecular Weight of α -2 antiplasmin: 55 kDa.

Positive Controls: α -2 antiplasmin (m): 293T lysate: sc-124904 or NIH/3T3 whole cell lysate: sc-2210.

RECOMMENDED SECONDARY REAGENTS

To ensure optimal results, the following support (secondary) reagents are recommended: 1) Western Blotting: use donkey anti-goat IgG-HRP: sc-2020 (dilution range: 1:2000-1:100,000) or Cruz Marker™ compatible donkey anti-goat IgG-HRP: sc-2033 (dilution range: 1:2000-1:5000), Cruz Marker™ Molecular Weight Standards: sc-2035, TBS Blotto A Blocking Reagent: sc-2333 and Western Blotting Luminol Reagent: sc-2048. 2) Immunofluorescence: use donkey anti-goat IgG-FITC: sc-2024 (dilution range: 1:100-1:400) or donkey anti-goat IgG-TR: sc-2783 (dilution range: 1:100-1:400) with UltraCruz™ Mounting Medium: sc-24941.

DATA



α -2 antiplasmin (M-20): sc-67509. Western blot analysis of α -2 antiplasmin expression in non-transfected: sc-117752 (A) and mouse α -2 antiplasmin transfected: sc-124904 (B) 293T whole cell lysates.

STORAGE

Store at 4° C, **DO NOT FREEZE**. Stable for one year from the date of shipment. Non-hazardous. No MSDS required.

RESEARCH USE

For research use only, not for use in diagnostic procedures.